

Norse Coastal Farms

**Field Report of a Survey in the Southwest
“Vatnahverfi Peninsula”
Summer 2009**



Christian Koch Madsen

With aid and contributions by

Jette Arneborg, Poul Baltzer Heide & Konrad Smiarowski

**The National Museum of Denmark,
Department of Danish Middle Age and Renaissance, Copenhagen, Oct. 2009**

Contents

Introduction	p.2
Surveying 2009 – Aims and Methods	p.3
”Log Book 2009”	p.5
E63	p.10
E67	p.10
E92	p.11
E93	p.16
E94	p.23
E95	p.30
E95a	p.35
E95b	p.40
E118	p.43
E172	p.45
E178	p.49
E179	p.55
E181	p.58
E188	p.63
E190	p.64
E237	p.68
E274	p.69
E275	p.69
E314	p.70
E322	p.71
E322a	p.75
E324	p.76
E325	p.78
E326	p.80
E327	p.82
E328	p.83
E329	p.85
E330	p.88
0109	p.91
0209	p.92
Results and Perspectives	p.94
Bibliography	p.95

Explanations & Information:

Earlier work: Sources about the individual ruin group used prior, during or after the field work.

Ruin numbering: The source on which the ruin numbering was based (if none noted own numbering).

Map/plan signatures: Dark grey = building interpreted as dwelling, grey = outhouse, light grey = Inuit feature, black = stone structure/stone wall/dike (in GoogleEarth imagery also natural stone/cliff), triangle = cairn, diamond = fox trap.

GPS Coordinates: Are given in degrees, minutes, and seconds relating to WGS84 map datum.

Descriptions: Stone/turf signifies a majority stone in the construction and turf/stone vice versa. Unless otherwise noted, all measurements describe outside dimensions.

GUIDE (Greenland Unique Identification Number): Ruin numbering system used by P.B. Heide.

Photos: Unless otherwise noted, all photos are by Konrad Smiarowski.

Original Field Notes: Are stored at the National Museum of Denmark, Department for Danish Middle Age and renaissance.

All Original Field Photos: Are found with the participants of the field season 2009.

Introduction

Beginning in 2005 as a research project under the IPY, the Vatnahverfi Project initiated a series of years of renewed field work in the Vatnahverfi region, South Greenland (Arneborg *et al.* 2009, Møller&Madsen 2005, 2006, Møller *et al.* 2007). Continued under a new and broader research agenda – *Resources, Resiliency, and Cultural Identity in Norse Greenland ca.985 – 1450* – though still coordinated from the Danish National Museum by Jette Arneborg, the field work in Vatnahverfi has since kept expanding and branching out, yearly bringing into play new research aims and new research collaborators.

The original aim of the Vatnahverfi Project was to provide a uniform documentation and survey of the farms and shielings of the area known to the Medieval Norse as Vatnahverfi (*the settled area with many lakes and rivers*), in order to facilitate modern analysis of the farms, their place in and use of the landscape, on a regional scale. This field work was, with minor supplementary surveys, finished in 2006. However, the brief time spent in the coastal area of the Vatnahverfi and the interdisciplinary discussions inspired of these experiences, has led to the idea that in order to understand the settlement system of the Norse, we need to embrace the entire system, not only the farms in the inner fjords, which have been the focus of archaeological attention since the earliest days of Norse research. The coastal region was, in fact and as will demonstrated in the following, fairly densely settled and with farms of considerable size. The location of these farms in areas with poorer grazing land, but better access to the bounties of the sea, might have been of high importance in a medieval community that increasingly depended on marine resources, e.g. seals, for their subsistence. In any case, the farms of the coastal zone has to long been overlooked in the discussion of the medieval Norse. Thus, one aim and first part of the 2009 field season, running roughly from the 24th of June - 12th of July (plus the 20th-22nd of July), was to survey 20 (though 30 were actually visited) of the known ruins in the coastal region of the Vatnahverfi Peninsula, i.e. the area between the fjords Igalikup Kangerlua (Igaliku Fjord) and Agdluitsup Kangerlua (Lichtenau Fjord).

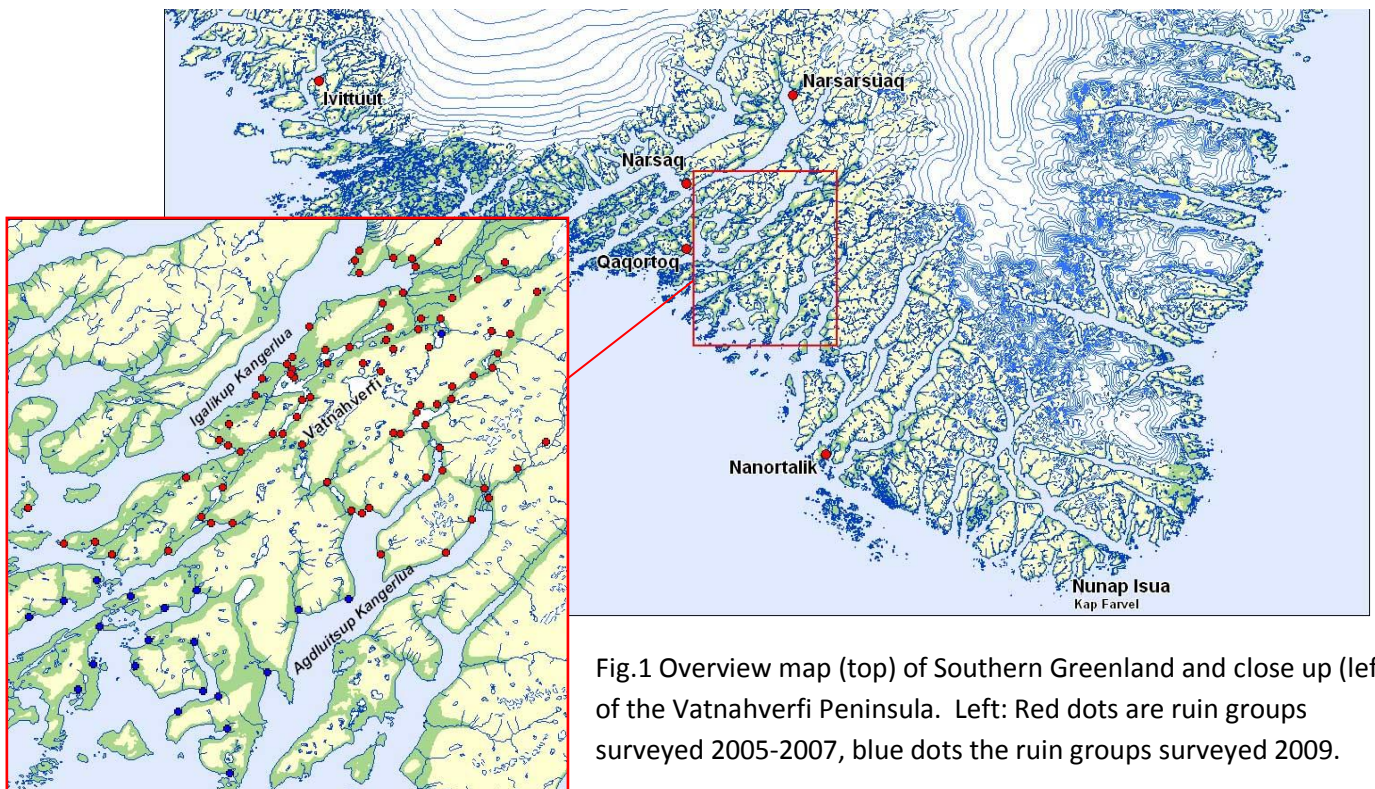


Fig.1 Overview map (top) of Southern Greenland and close up (left) of the Vatnahverfi Peninsula. Left: Red dots are ruin groups surveyed 2005-2007, blue dots the ruin groups surveyed 2009.

Surveying 2009 – Aims and Methods

The surveying team of 2009 consisted of Poul Baltzer Heide (University of Aarhus), Konrad Smiarowski (City University of New York) and the author, Christian Koch Madsen (University of Copenhagen). Together we had several projected and mutual overlapping research aims of the 2009 field season in South Greenland; **1)** to survey with DGPS and document 20 of the known ruin groups in the coastal region of the Vatnahverfi peninsula (C.K. Madsen) (fig.4), **2)** to survey each



Fig.2 Konrad Smiarowski (left) and Poul Baltzer Heide (right) onboard the zodiac. *Photo: C.K. Madsen 2009.*

site for new ruins (here among cairns – P.B.Heide: separate report), **3)** to survey areas with no known ruin groups, **4)** to core for midden preservation (K. Smiarowski – separate report), **5)** to recover, where possible, datable material from ruins eroding away or otherwise providing natural sections. Research points 1, 2 and 5 were the main responsibility of the author and the methods and results are presented and discussed in this report.

Accomplishing all of these goals in a short time depended upon working fast and efficiently. In the initial planning of the field season the following method was devised and, by large, maintained during the actual work: Relying on the National Museum 90hp zodiac for our transportation, we would decide upon a campsite situated with favorable geographical access to several ruin groups. Setting up a temporary base camp (normally for a few days only) here, we would then sail with just work equipment to the nearby ruin groups (thus saving time on the setting and striking of camp, plus adding to the speed of sailing and landing) before again moving to another favorable base camp (see fig.5). This proved a highly successful and efficient method of surveying.

When at the individual ruin group, the tasks were distributed and generally executed as following; initially we would all start to search for the ruins known from the old register, but once a majority of ruins were identified according



Fig.3 C.K.Madsen GPS surveying at ruin group E325 in the Akulleq Fjord.

to their previously surveyed location and numbering, C.K. Madsen would immediately set up the GPS and start surveying. This was done with a Leica SR20 GPS, which with baseline post-processing normally provides an accuracy of about 30cm's in position and 60cm's in height. During this GPS surveying P.B. Heide would search for the last ruins and K. Smiarowski would start coring. With all the known ruins found, P.B. Heide would then start a survey for cairns and other structures in the highlands surrounding the site, get overview shots, conduct his research and, when finished, return. If time permitted, he continued the search for new ruins. When satisfied with the results from coring, K. Smiarowski would start taking pictures of the individual ruins. C.K. Madsen then did a subsequent description of ruin group and individual the ruins in the notebook.

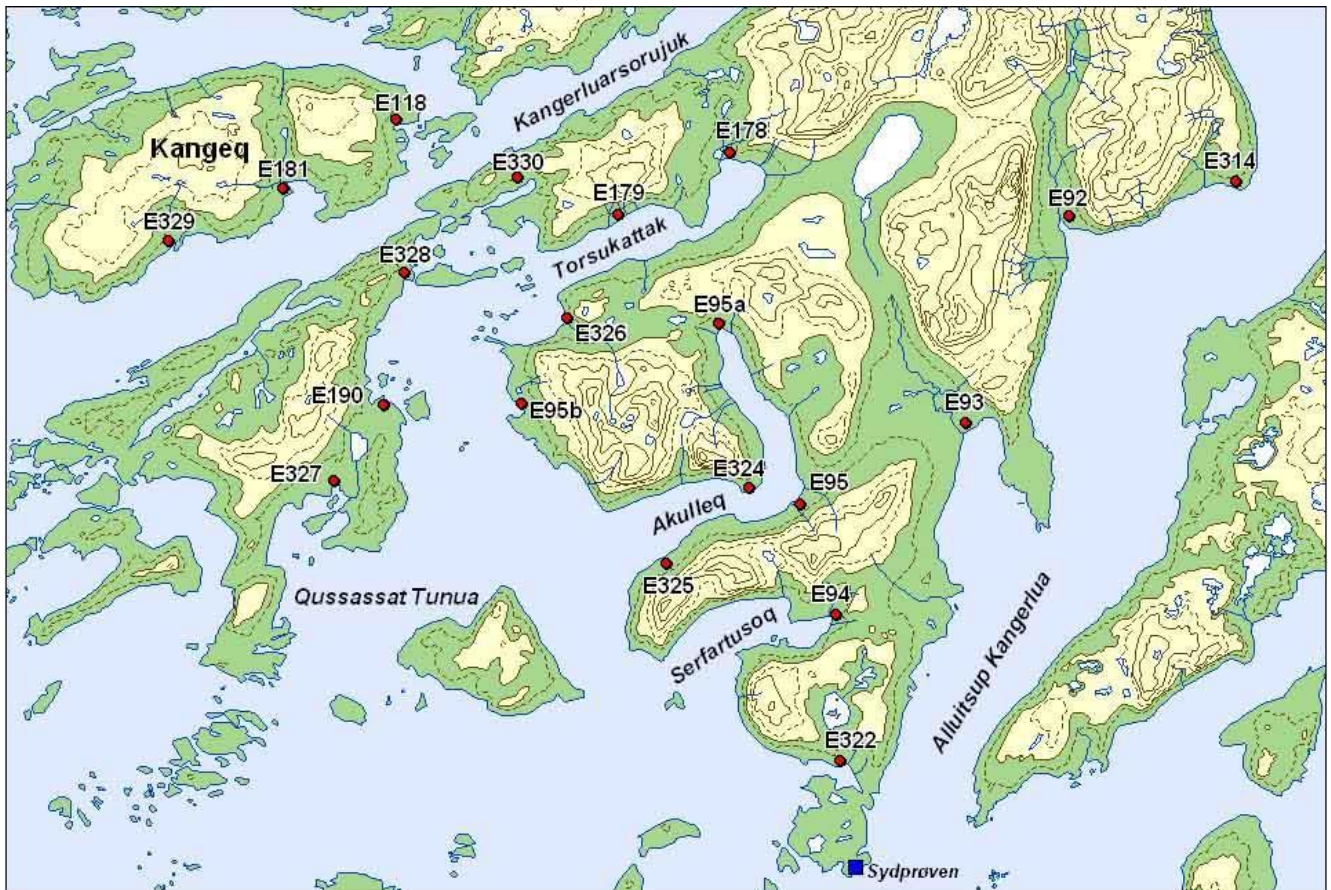


Fig.4 Overview of the 20 known ruin groups to be surveyed during the 2009 field season.

Even though the field season was generally successful and we managed to visit and survey all the sites planned (fig.4), some remarks should be made upon the method and work. First of all, from the experience of the 2009 field season, one should, by the described method, normally hope to do 2 medium sized (6-10 ruins) and fairly close lying ruin groups a day (8-10 hours)(not counting travelling and logistical issues, we had about 12 effective days in the field). However, this estimate holds valid only if the ruin groups are readily located (i.e. if they are accurately marked on the map, which is not always the case) and if the search for new ruins at each ruin group is restricted in time and to a limited area around the known ruins. As can be estimated from the given numbers and the ruins actually involved, we were constantly pressed for time and, in hindsight, generally did not have enough time to look methodically for new ruins at the individual ruin group. Also, we did not have time to survey any “blank areas on the map”. Finally the recovering of datable material was abandoned, not for a lack of promising sites, but because it could not be accomplished with the proper documentation (e.g. drawing of plans the ruins and the sections sampled).

“Log Book 2009”

The following is a brief account of the parts field season 2009, which involved surveying. A more detailed diary (in Danish) of the whole season can be found privately with the author.

24-06-2009: Arrival in Narsaq and quartering at the local hostel. Dinner with the local museum director, Rie Oldenburg, and her husband. Weather: Quiet w. light cloud cover.

25-06-2009: Visited the landnám farm, Ø17a, in Narsaq, afterwards Dyrnæs. Konrad and Christian gave two one hour lectures at Kulturhuset in the evening. Weather: Quiet w. rain from around noon and the rest of the day.

26-06-2009: Transfer from Narsaq to Narsarsuaq by local boat (Tom-Erik). Arrival at Narsarsuaq and meeting with Poul 9.45. Transfer with equipment from Narsarsuaq to Igaliku 13.00. Here we met with Hans Kapel and Jeppe Møhl and learned that the zodiac had arrived 14 days late and with some defects. They were repairing the boat in Igaliku Kujalleq and left us with the small zodiac. Quatering at the hostel in Igaliku. Weather: a light breeze w. some clouds and rain from around 18.00.

27-06-2009: Packed the equipment brought to Igaliku and moved all surplus (VECO) equipment to the stable in Igaliku Kujalleq. Went through the equipment for the excavation and brought it out of the stable. Konrad and Christian biked in to visit Siiku and Arnaq, (sheep farmers at E69) and to check up on the deal with the rented summerhouse at E172. Large zodiac was not fixed. Sailed back to Igaliku and quartered at the hostel. Weather: Mild with light clouds and a breeze.

28-06-2009: Packed all the equipment need for the survey and sailed to Igaliku Kujalleq to check on the boat, which had been fixed (but needed new spark plugs) and around 15.00 we sailed back to Igaliku to get oil. From there, sailed on to Qaqortoq to get fuel and dinner. Camped at Kangilleq v. Akunaat (Munkebugten). Approx. from Hvalsee and outwards there was a considerable and increasing amount of drift ice, especially on the southern side of the fjord. Weather: Clear and sunny with a mild to brisk fjord wind.

29-06-2009: Sailed from Kangilleq to Qaqortoq to take in the final supplies and necessities (but could not get the right spark plugs, so we decided to go on with old ones). Left Igaliku around 16.00 steering for the southern fjords through the gap at Upernaviarsuaq. In spite of lots of drift ice we edged our way through, landed and camped at Itilleq on Kangeq around 19.00. Weather: Light cloud cover w. a light fjordwind. Heavy fog on the outer coast (for what reason we sailed inside the skerries).

30-06-2009: Sailed to E181 where we found and surveyed 12 of the 13 known ruins of the site, plus 4 formerly unregistered Thule-ruins and one grave. Weather: Until noon heavy clouds, hereafter w. rain and from around 16.00 thick fog (which caused us to stay at the camp at Itilleq for the rest of the day).

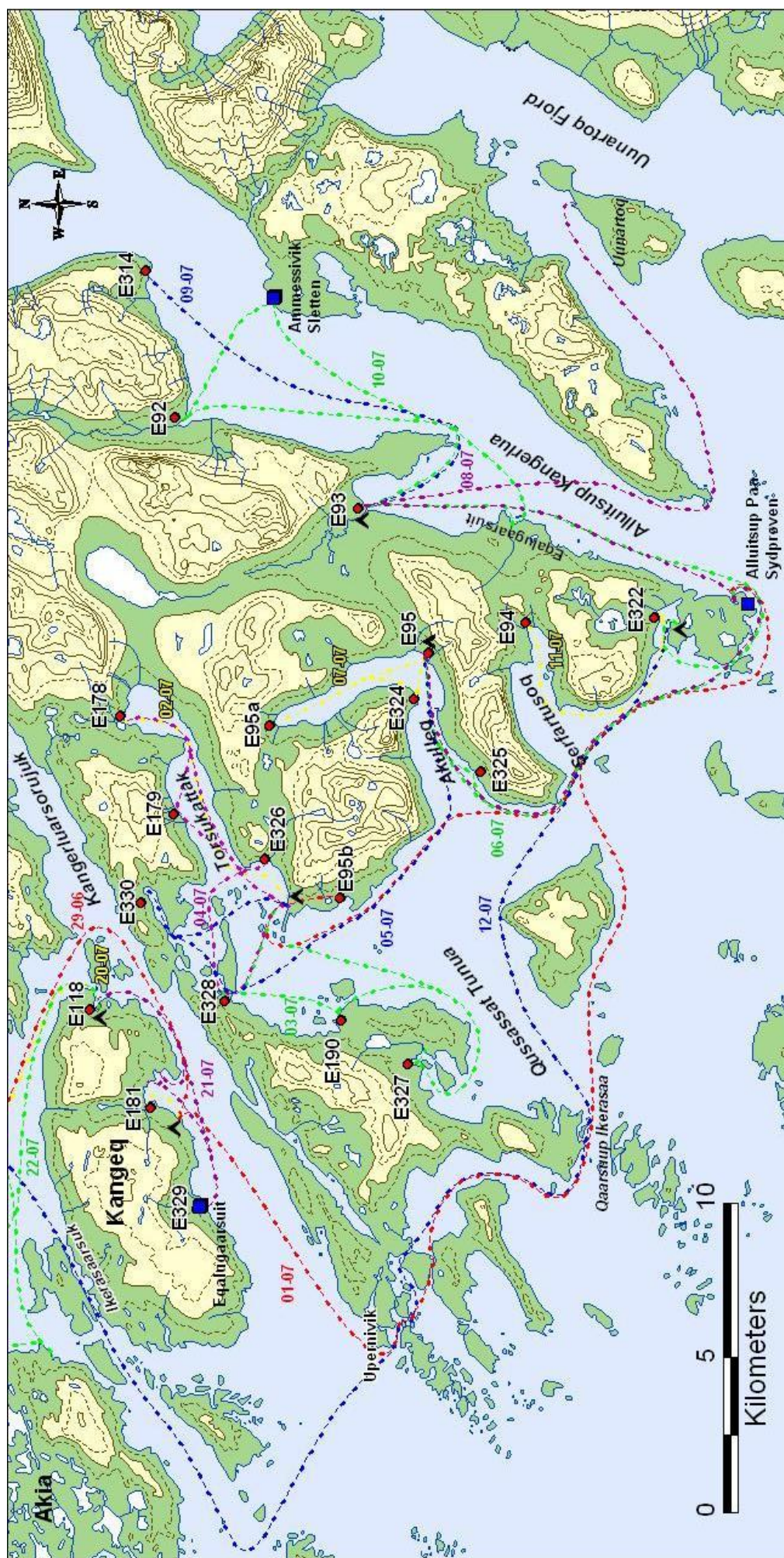


Fig.5 Overview map of the ruin groups (black numbers), main travelling routes and dates (colored lines and dates) and some of the place names referred to in the Log Book.

01-07-2009: Left the Itilleq camp and sailed south for Alluitsup Paa (Sydprøven). Still much drift ice, in the narrow sounds often packed, and thick fog banks causing us to go slowly and along the shore. Went inside the skerries at Upernivik, through Qaarsuup Ikerasaa and on to Alluitsup Paa, where we bought gas. Sailed back north to the opening of the Torsukattak Fjord (south of Sannerut), where we set up camp and then walked to E95b at Pamialluup Illukua, which we then surveyed in a couple of hours. We were back in camp around 21.00. Weather: Thick fog banks and a cold moderate breeze from the sea.

02-07-2009: Woke up to a beautiful, promising day, but we had miscalculated the tide and depth of the small cove where we had anchored and found the zodiac lying on dry land! Only around noon was it possible to move the zodiac and we then sailed for E178 at the head of the Torsukattak Fjord. Surveyed the ruin group and sailed back for the camp, arriving there around 20.30. Weather: Beautiful sunshine w. a light to moderate breeze. In the evening there was no wind.

03-07-2009: Sailed for E327, where we spend an hour finding the ruin (but did then reconnoiter the surrounding area), which was wrongly placed on the map. Sailed from there to Qaarsuatsiaq (E190), which we surveyed in around 5½ hours. Sailed to E328, which we also had a bit trouble finding, but eventually did and surveyed it. Were back in camp around 21.00. Weather: Light clouds w. a rigidly cold wind blowing from the sea all day.

04-07-2009: Sailed to E178 to pick up a spade we forgot there and then on to E179, where we surveyed the ruins and reconnoitered the area. Sailed on to E326 and found and surveyed the two ruins found here by Ove Bak. Went over the terrain rather quickly and cleaned a section in the ruin being eroded away by the fjord. Sailed back to E328 where we forgot a map container and returned to camp around 18.00. Weather: light clouds and a moderate, cool breeze.

05-07-2009: Took down the camp and sailed to E330 on the other side of the fjord, which was surveyed and searched for new ruins in around 2 ½ hours. Sailed from there to the fjord Akulleq, where we set up the next base camp at ruin group E95 (of which there is no information other than that of F.Petersen in 1898) and immediately started the surveys. Coring in the midden produced some bones and a 2x1m trench was opened to check the preservation. Weather: Sunny w. a moderate fjord wind and some fog.

06-07-2009: Sailed for Alluitsup Paa to buy gas and food. Had a shower at the settlement bathhouse. Sailed on to E325, which we had some trouble finding, because all we had was an inaccurate sketch. Surveyed the ruin and went back to E95, where finished surveying and trenching around 20.00. Weather: Beautiful sunshine w. a moderate to strong fjord wind.



Fig.6 Sailing through the fog to the camp site near Itilleq on Kangeq on the evening of the 29th of June. Photo: P.B. Heide 2009.

07-07-2009: Sailed for E95a at the head of the Akulleq Fjord, another site without any written registry since Arctander. Surveyed the ruin group in around 5 hours, harassed terribly by flies and mosquitoes. Sailed on to E324 which we had to search for, not because of bad mapping, but because we could not believe its location in the landscape! Surveyed the ruin group in around an hour and sailed back to camp, where we arrived around 17.30. Weather: Most of the day cloudy and humid, with heavy rain from around 15.00.

08-07-2009: Left camp at E95 and sailed for Alluitsup Paa, where refueled and took in provisions. Then moved on to E93 in Alluitsup Kangerlua, where we set up camp and then started surveying the ruin. Kept surveying until around 17.00, where we were interrupted by very heavy rains and around 18.00 we instead left for Uunartoq in the Uunartoq Fjord to bathe. Was back in camp around 21.30. Weather: No entry.

09-07-2009: Finished surveying E93 and then sailed for E314 around 14.00. Again we had to search a while to find the ruin, which we then surveyed. Were back in camp around 20.00.

10-07-2009: Sailed for E92 and surveyed the ruin group and the surrounding area in around 4½ hours, fiercely harassed by mosquitoes and flies. Sailed for Ammassivik (Sletten) to buy gas. From there sailed on to the sheep farmer at Eqaalugaarsuit, where a ruin is marked on the map. However, the farmer knew nothing of this ruin and neither could we find it where it was placed on the hiking map. It might have been wrongly marked or removed by field work? Sailed back to camp and decided to move out right away because of good sailing weather and threatening drift ice in the cove. Sailed around Alluitsup Paa and anchored in Zacharias Harbor. Weather: Nice day with few clouds and moderate fjord wind.

11-07-2009: Sailed for E94 at the head of the Serfartusoq Fjord and spend around 5 hours surveying this ruin group and the surrounding landscape. Sailed back to Zacharias Havn and surveyed ruin group E322 on the other side of the inlet and finally E322a just next to the camp. We worked around 2½ hours on these two ruin groups. Weather: To begin with sunshine with a moderate fjord wind, but from around 14.00 light rains.

12-07-2009: Sailed from Zacharias Havn for the Igaliku Fjord, meaning to sail west of the skerries on the outer coast. However, thick fog prevented this and we instead sailed through the strait of Ikerasaarsuk north of Kangeq. Arrived in Qaqortoq around 12.00, where we had lunch, took in provisions and then sailed into the fjord to E172 (Tatsip Ataa). Weather: Beautiful sunshine and a moderate fjord wind.

13-07-2009 – 15-07-2009: Excavation at E172.

16-07-2009: Sailed from E172 around 13.00 to Eqaaluit (E78) to survey a ruin which we missed in 2006 and to pick up Poul, who had surveyed a route in between these two sites. Was caught here by a storm and forced to stay the night at the local sheep farmers, Lasse Bjerre. Weather: At first sunny with some hints of stormy weather, the calm and, finally the Sydost (gale).

17-07-2009: Secured Lasses boat and the zodiac at the mouth of the Eqaaluit river and then hiked over the mountains back to E172. Weather: Dry and stormy.

18-07-2009: Got up at 05.00 and hiked back to get the zodiac, which we then sailed back to E172. Weather: Cloudless with a strong fjord wind.

19-07-2009: Excavation at E172.

20-07-2009: Poul and the author sailed for Qaqortoq around 11.00 with Hans Kapel, Niels-Christian Clemmensen and one defect water pump. Having dropped off the two others, Poul and the author spend a few hours taking care of different business (including the water pump) and then sailed for the inlet just south of E118 on Kangeq, where we set up camp.

21-07-2009: Sailed for Eqalugaarsuit on Kangeq, where we surveyed ruin group E329 in around 4½ hours. On the way back we stopped by inlet with ruin group E181 to search again for the one ruin we had not been able to find, but without success. Then sailed on to E118, which we searched for for around 3 hours without success (though finding some Inuit ruins). Sailed back to camp where we arrived around 17.30 and then spend another hour searching for ruin group E118. Weather: Beautiful sunshine w. a moderate fjord wind.

22-07-2009: Took down the camp and sailed for Akia, where we had decided to visit, but not survey three registered ruin groups, of which we could only with certainty find one Norse, E188 (of which there is no registry, but it had been excavated not too long ago). Sailed back to Qaqortoq to get the water pump from the repair shop and then on to E172. Weather: Beautiful sunshine w. a moderate fjord wind.

23-07-2009 – 24-07-2009: Excavation at E172 (surveyed then newly found structures on the 24th).

25-07-2009: Sailed for Igaliku Kujalleq w. Seth Brewington and from there hiked in to Qorlortukasiip (E67), where we surveyed two ruins pointed out to us by the sheep farmer in 2008 and cored the midden south of the main dwelling. From there we hiked on to the newly found ruin group 0109 on the north shore of the lake Taseq Ammalortoq, a site also pointed out by the sheep farmer, where we spend about an hour surveying the small foreland where the ruin group was located. Hiked back to Igaliku Kujalleq and then sailed back to E172, where we arrived around 19.00. Weather: Cloudy w. occasional light rain and a moderate fjord wind.

26-07-2009: The author alone sailed to Qanisartuut and from there hiked in to E167. Reconnoitered the small foreland sticking out into the lake Saqqaara Tasia SE of ruin group E71a, but found nothing. Arrived at E167 surveyed the enclosure (see below) and then walked back to E71, where the midden of the south farm was cored for preservation without any luck. Hiked back to Qanisartuut, reconnoitering on the way the little valley NE of E71a, but found nothing but a nice cairn (which must be recent). Sailed back to E172, arriving around 19.00. Weather: Until around 13.00 beautiful sunshine, but from then on some clouds and a strong fjord wind.

27-07-2009 – 04-08-2009: Excavation at E172.

05-08-2009: After a visit in Igaliku, sailed the excavation team to E64 to do some fishing. In the meantime, the author surveyed the coast line W of E63, looking for ruins mentioned by D. Bruun, but finding none. Weather: Beautiful sunshine w. a light fjord wind.

06-08-2009 – 19-08-2009: Excavation at E172.

GPS: N60°55'23,33"/ W045°17'29,14". Earlier work: Bruun 1895, Møller&Madsen 2005.

Site Description: Surveyed in 2005, D. Bruun had some ruins (his number 1&2) that we could not find. So when presented with a chance to look for these, about an hour was spent look for ruin nr.2 along the coast west of the ruin group, but without success. Seeing the erosion of the coastline, it is most probable that both ruins 1 and 2 have been removed by erosion.

GPS: N60°51'44,57"/ W045°14'58,00". Ealier work: Holm 1880, Møller&Madsen 2005.

Site Description: Surveyed in 2005. However, during a visit at the present sheep farmer at Qorlortukasiip, Andela, in 2008, he directed our attention to two unknown ruins, which were then subsequently surveyed in 2009.

Numbering after Møller&Madsen 2005.

R2: Just around 160m WNW of the main dwelling (R1), one finds a couple of odd ruins. Placed on a low, naked cliff knoll, R2 seems nothing more than an indistinct heap of stones measuring approx 220x160cm (fig.7, 8). However, upon closer examination at least the foundation of the structure seem to be fairly well built. Based on the structures visibility and location it might be a partially collapsed *cairn*? The lichens on the structures suggest a considerable age?

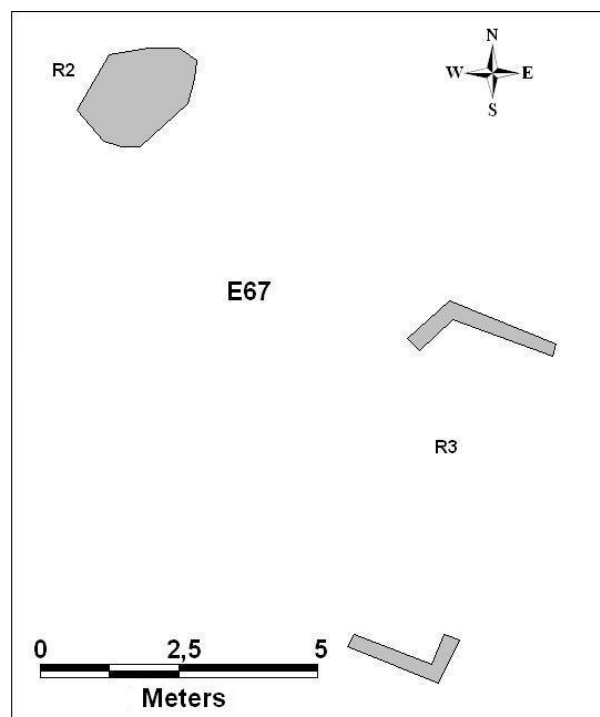


Fig.7 E67 Ruin 2 and 3

R3: Just east of R2 and the knoll, one can see two indistinct lines made of rounded stones. The lines lie about 6 meters apart, both in one end angling c. 90° towards the other (fig.7). If this is indeed a Norse ruin, these lines could be the remains of a 20-30cm wide foundation for a (turf?) building with outside dimensions of c.6,5x2,5m. Judging from the appearance of the stones in R1, these might have been removed from R2?



Fig.8 R2 seen towards the NW. Photo: C.K. Madsen 2009.

GPS: N 60°37'27.22"/ W 45°27'5.99". Ealier work: Bruun 1895.



Fig.9 Seaside view of the bay with E92 seen towards the NNW. The plateau with the ruins is just behind and to the left of the large iceberg. *Photo: P.B. Heide 2009.*

Site Description: Sailing in towards the Norse farm of Nipisat (which means lumpfish in Inuit, which they used to catch in the bay, Bruun 1895;418), the surrounding landscape does not, upon first sight, look very inviting (fig.9); The majority of the farms' buildings are located on a flat gravel plateau to the east of the large river draining out into the fjord from a valley that stretches some 5,5km

north of the site. To the east and northeast the mountain of Tinupaarnek rises very steeply to above 800m and to the west, the mountain of Nipisat Qaqqaat even more so to a height of 921m. The bay in front has very shallow waters and during low tide the silt beach stretches out for several hundred meters. Standing on the beach, one encounters a steep, gravelly slope, where the plateau has and is eroding into the fjord. The plateaus on both sides of the river did, upon our visit, appear rather dry and vegetated almost exclusively by low shrub and very little grass (found only in the wetter areas just around the ruins, chiefly ruin 03)(fig.10). From the site itself, no larger, fertile grazing areas could indeed be seen (but may perhaps be found further up in the valley?). On the flattest part of the plateau (that towards the erosion wall), the surface display marks of wind erosion, testifying that strong winds must quite often come down from the valley.

With its 15 individual ruins (of which 6 were added in 2009) (fig.11) and a reasonable dwelling (see below), the farm of



Fig.10 Ruin 9, 10 & 11 and the plateau with most of the ruins seen towards the SW. Note the dominating vegetation of low shrub on both sides of the river. *Photo: C.K. Madsen 2009.*

Nipisat appears to be a small to medium sized farm. Also the sparse vegetation of the surrounding landscape does suggest that this could never have been a large farm (unless, of course, the vegetation has changed significantly since Norse times). As we spent only 5 hours surveying the site and only on the eastern side of the river it is possible, however, that some ruins can hide on the western side. The natural section in the eroded ruin 07 (see below) was cleaned and revealed a thin black (charcoal) layer at level with the lowest stones of the structure, which could possibly be used to date the building (though we did not have time to retrieve samples in any proper manner). A 20min stretch up the valley was also surveyed, among other things looking for an enclosure (here R15) mentioned by F. Petersen, but without finding it.

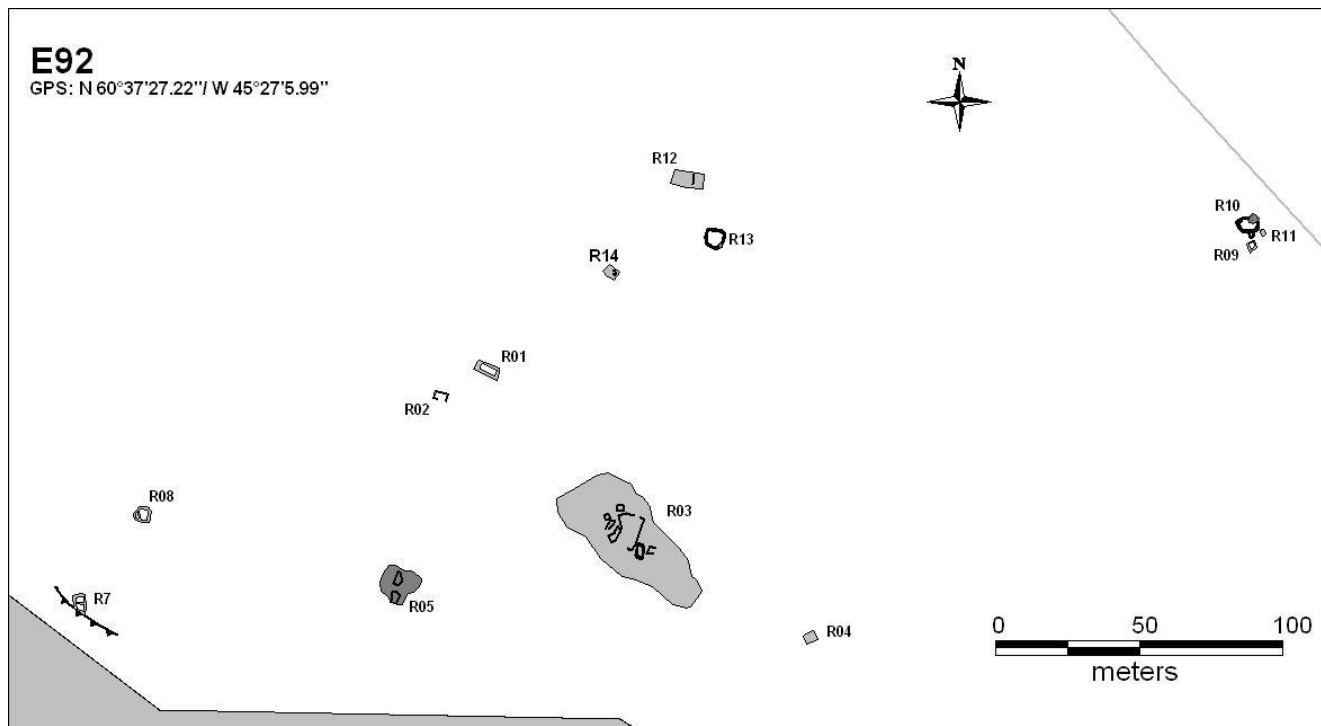


Fig.11 Plan of E92, Nipisat. The black line with “black teeth” by R07 signifies the approx. erosion line of the plateau.

Numbering after Bruun 1895.

R01: Stone/turf wall, 1m wide and 10-15cm high (i.e. barely visible on the surface), for a rectangular building approx. 8,6x4m (fig.12). This foundation encloses a depression, where a partition in two rooms may be glimpsed. Overgrown with juniper, willow and grass. The ruin is most likely some form of *outhouse*.

R02: The very indistinct remains of a building c.4,8x3,1, only partially preserved (part of the south wall cannot be distinguished). The walls are constituted by single rows of larger rounded stones at best raised some 20cm above ground level. Foundation for a *turf building*? The ruin is vegetated by willow and crowberry.



Fig.12 Ruin 01 seen towards the SE. Photo: C.K. Madsen 2009.

R03: Rectangular structure, c. 57x23m, which takes the form of a considerable elongated mound running along a low ridge, vegetated by grass and with many protruding stones and depressions (fig.13). The precise outline of the structure is very hard to discern because of its collapse and, for instance, in the SE end of the ruin, it appears only as an uneven grassy area. Several wall lines and probable rooms are visible on the surface of the mound. However, it is worth noting that F. Petersen in 1894 did several test pits and it is impossible distinguishing these from possible rooms. F. Petersen did establish the presence of collapse and possible midden west of the structure. Ruin 03 is probably a grouped (though no gap can be seen, neither could it in 1894, nor any stalling stones)



Fig.13 Ruin 03 seen towards the E. Note the lush grass on the slope, which must be where F. Petersen found midden deposits. Photo: C.K. Madsen 2009.

turf/stone build *dwelling* and *byre/stable*. It seems too large to be solely a byre. The ruin is vegetated by grass

R04: Very collapsed and overgrown (by crowberry, willow and birch) rectangular ruin, 4,3x3,1m, which appears as little more than a heap of angular stones raising slight above ground level. On the western side traces of a stone/turf build wall, c100cm wide and 5-15 high, can be glimpsed. Stone/turf built *economy building*.

R05: Larger, c.12,30x11,50m, but very indistinct turf/stone build structure, possibly a *dwelling*, but more probable a *stable complex* of some sort. A few traces of rooms/wall lines seem to be visible on the surface, but otherwise the ruin appears as nothing more than a slight elevation on the plateau with many protruding stones. F. Petersen excavated “a little” in the ruin (perhaps the c.3x3m “room” seen to the south), but found nothing.

R06: This ruin described by D.



Fig.14 The flat part of the plateau with ruin 05 (where the person is standing), 07 and 08. Photo: C.K. Madsen 2009.

Bruun could not be located in 2009 and must have fallen into the fjord.

R07: The remains of a rectangular building, partially eroded away and today measuring c.6,6x4,5m. The walls are c.80cm wide and build mainly in rounded stones with only a little turf preserved. A partition wall can be seen approx. in the center of the building that is undoubtedly some kind of *outhouse*. The southern gable has eroded away (fig.15) and by cleaning of this natural section, we found a thin black layer at level with the foundation, from where datable material could, but was not, be retrieved. Though the ruin is eroding away, it is worth noting that it apparently looks very much the same as in 1894 and the erosion, thus, is very limited. The ruin is today vegetated by willow and crowberry.



Fig.15 The eroded southern gable of ruin 07. Photo: C.K. Madsen 2009.

R08: A very collapsed turf/stone build ruin measuring c.5,2x4,7m (fig.16). The walls are c.100-120cm wide, mainly turf build, but with a few protruding rounded stones, which enclose a slight depression in the ground surface. On the western side of the building is a small extension, a room, enclosure, or hay-yard measuring c.2,2x1m (inside dimensions) is found. The building is some kind of *outhouse*, probably a *sheep/goat stable* w. a hay-yard or enclosure. The ruin is vegetated by grass and mosses.

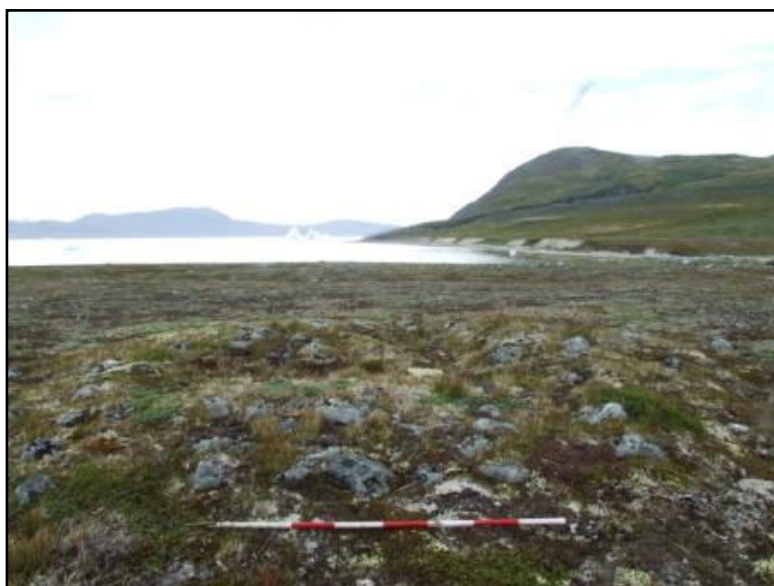


Fig.16 Ruin 08 seen towards the SSW. Photo: C.K. Madsen 2009.

R09: Small, almost square stone/turf build structure, c.3x3m, found some way up the slope and right next to ruin 10 and 11 (fig.10&17). The walls are c.60cm wide and preserved in 2-3 courses (up to c.60cm). Especially the southern and eastern walls (the latter is partly made up by a large stone slap) are nicely preserved. Very little collapse is seen lying around this structure of unknown function, and the rest of it must have been erected in some other material. Vegetated by birch and crowberry.

R10: Close to ruin 09, one finds a very well preserved building, c.8,1x5,5m, built in dry stone masonry (fig.10,17-18). Especially the eastern 2/3 of the ruin, probably *an enclosure*, is beautifully preserved, with well built walls c.100cm's wide and preserved in up to 10 courses (c.180cm), while the western 1/3 is a pile of collapsed stones (blurring any sign of an entrance). Half of the northern wall is constituted by a large boulder. A small enclosure, c.2,2x1,9m, has been added on the southern wall. Inside the ruin grows willow shrub and crowberry.

R11: Possible ruin/feature appearing as an approx oval, low, 60cm wide, bank surrounding a shallow depression (fig.17). Overgrown with crowberry and willow.

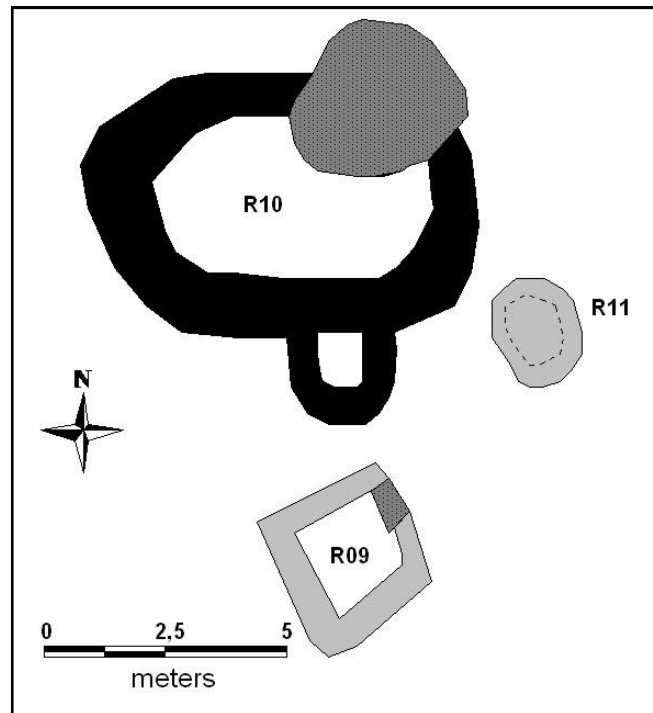


Fig.17 Detailed plan of R09-11.



Fig.18 Detail of the best preserved wall in ruin 10. Photo: C.K. Madsen 2009.

R12: Possible, but very badly preserved, foundation for a rectangular building of about 10,7x5,4m (fig.19). The ruin appears as indistinct wall lines of mostly angular stones laying about with no apparent order. If these are foundations, they must have been some 80-100cm wide and are not standing to a height of c.10-20cm. Particularly the eastern gable and the southern wall look convincing. *Outhouse?* Inside the ruin grows grass and birch.

R13: Approx. rounded structure, diameter of c.7,10m, comprised of large, rounded boulders, between the can be an empty gap of as much as a meter (fig.20). Only one of the stones appear to be natural and this circle of boulders may thus be the foundation for a turf build *enclosure*. Inside the structure grows crowberry and grass.



Fig.19. Ruin 12 seen towards the S. Photo: C.K. Madsen 2009.



Fig.20 Ruin 13 seen towards the SSW. Photo: C.K. Madsen 2009.

R14: Somewhat indistinct, rectangular structure, ca.5x3,8m, with walls constituted partly of larger stones slaps placed upright. Probable *outhouse*. The ruin is completely overgrown by birch and willow.

R15: This ruin was actually found (but not numbered) by F. Petersen in 1894 and described as being an enclosure lying “a 20 minute walk into the interior and a 100 paces east of the river”. In his sketch of the site it is drawn as a roughly rectangular stone build (w. rounded

edges) enclosure, part of which is made up by a large boulder. This ruin, which is now numbered R15, was sought after in 2009, but, unfortunately, not found. It does, however, point towards a use of the valley north of the ruin group as grazing land and this area should be revisited and surveyed in the future.

E93 – Kangarluluk

60V2-0IV554

GPS: N 60°34'47.44" / W 45°30'51.86". Earlier work: Bruun 1895.

Arriving at the Norse farm of Kangarluluk (the “small bay” in Inuit) from the sea side (fig.21), one does not find the buildings as they would normally be located at a ruin group lying down to the fjord: instead they are found a small kilometer into the valley and clustered on the lower part of the slopes of the mountain of Kangerluluup Qaqqaa (890), which rises abruptly northeast of the farm. This alternative location is probably best explained, as it was already by D. Bruun (1894;420), by the fact that the areas closest to the fjord are very dry and stony, whereas the valley floor a bit



Fig.21 Seaside view of the cove of Kangardluluk. The mountain in the center is Kangerluluup Qaqqaa. Photo: P.B. Heide 2009.

further inland, stretching some 3km NW-SE and 1,6km NE-SW, presents a massive plain of wet and fertile grassland just in front of the farm (fig.22), the buildings themselves being placed on slightly raised and well drained ridges divided by small streams (fig.23). Through the broad pass between the mountains of Qaqqarsuaq and Qaqqaesuaraarsuk to the SW, there is easy access to the Akulleq fjord and the farm of E95 and to the north there is easy access to the valley of lake Kangerluluup Tasia. Also south along the coast there is easy passage on foot. The shore of the bay presents an easy landing with a beach protected by a gravel bank.



Fig.22 180° view of the fertile floodplain in front of E93 seen towards the SW. To the left is the cove, while the concentration of stones on the low ridge to the front right is ruin 05. *Photo: C.K. Madsen 2009.*

With its favorable position in the landscape, both in regards to communication, transport and production, the farm of Kangardluluk must have been one of the more, if not the most, important farm in the general area. This interpretation is echoed by the large dwelling and byre and the great number of structures (22), of which 6 were found in 2009. Still, and as is apparent from the plan of the site (fig.23), these were found very near to the known ruins and in about only 6 hours of survey. Thus many others ruins could lie around the edges of the valley. A smaller site with 3 ruins, E323, is recorded on the southern side of the valley (Berglund 1980), but was not visited.

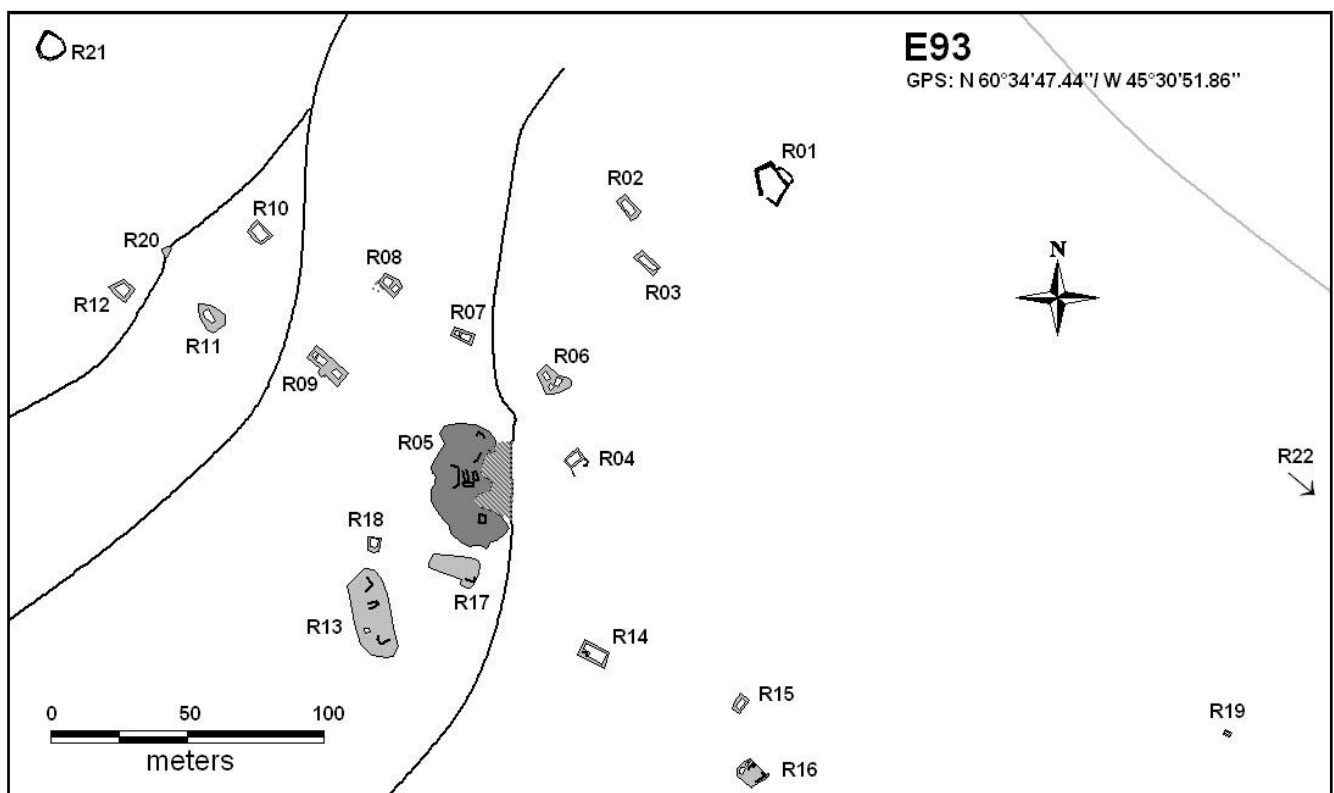


Fig.23 Plan of ruin group E93. The waterways indicated on the plan are only lesser streams.

Numbering after Bruun 1895.

R01: This is a beautifully preserved, stone built enclosure, roughly rectangular in shape and with a clear entrance on the SW wall. The walls, which are heavy and double-faced with larger stones/boulders in the lower courses and smaller stones in the upper part and the core, are c.100-140cm wide and preserved in up to 5 courses (c.130cm)(fig.24). On the NE wall one finds a small added enclosure, somewhat more collapsed and build mostly in smaller, rounded stones (a later addition?). The walls enclose a total area of c.114m². Inside the enclosure grows birch, willow and grass.



Fig.24 Detail of the wall of R01. Photo: C.K. Madsen 2009.

R02: Very distinct rectangular building, c.9,2x4,3m, with stone build walls (foundations?), the gables measuring 120-140cm in width, the long walls c.100cm, and preserved in up to 4 courses (c.100cm)(fig.25). Especially the two gables are well preserved and an entrance, c.60cm wide, can be seen on the southwestern wall. Judging from the lacking collapse, the stone build walls can have stood no higher than c.150cm and the rest of this *outhouse*, perhaps a *sheep/goat stable*, must have been built in more perishable material. The ruin is overgrown with grass and crowberry.

R03: Rectangular structures, c.9,5x4,2, very much resembling R02, but not quite as well preserved (except the northwestern gable) and especially in the southeastern part are the walls difficult to distinguish. Like R02, probably a *sheep/goat stable* or other *outhouse*. The ruin is only vegetated by a touch of moss.



Fig.25 Ruin 02 seen towards the NW.

R04: Stone/turf build *outhouse* of rectangular shape, c.6,7x4,2m. The walls/foundation are c.70-80cm wide, preserved up to a height of c.40cm and consists chiefly of larger rounded stones, while lesser rounded stones are found lying inside and outside the ruin (collapse). The ruin is fairly distinct, except for two, possible stretches of wall or dike, possible a hay-yard or enclosure, which have been added to the SE side of the building. It is overgrown with grass and moss.

R05: Large, elongated farm mound following a low, well-drained ridge, undoubtedly *the dwelling*, which lies with an excellent view to both the fjord and the floodplain (fig.22). Even though the ruins are very visible from the extreme number of collapsed stones, it is very hard to distinguish the exact size of the building that is here measured to c.46m in length and 18m in width, although quite unevenly shaped (note that the southern end of the building is here, contrary to the 1894 description, interpreted as a separate building, see below). A number of quite clear rooms and wall lines can be seen among the stone debris (without any actual courses being preserved). Especially in the southern end is the amount of collapsed stones impressive and here one also finds some massive stone beams, the largest of which (fig.26) measure c.320x60x30cm. In the northern end one sees a few upright stone slaps that might be stalling stones. Between the ruin and the stream to the east of it is a lush midden-area. Whether the ruin was excavated in 1894 is unclear, but there seems to be an old 1x1m test trench just where the midden joins the dwelling. The ruin is overgrown w. grass and crowberry.



Fig.26 The largest of the stone beams in the southern end of dwelling 05. Photo: C.K. Madsen 2009.

R06: Somewhat unevenly shaped stone/turf built ruin, measuring c.11x7,5. Many stones are visible in the surface, but no actual courses are preserved in the walls that seem to be 70-80cm's wide and preserved to a height of c.20-30cm. This could be some kind of small *stable/barn complex*, since several rooms can be traced. A possible test trench can be seen on the northern side of the ruin. Vegetated by grass and moss.

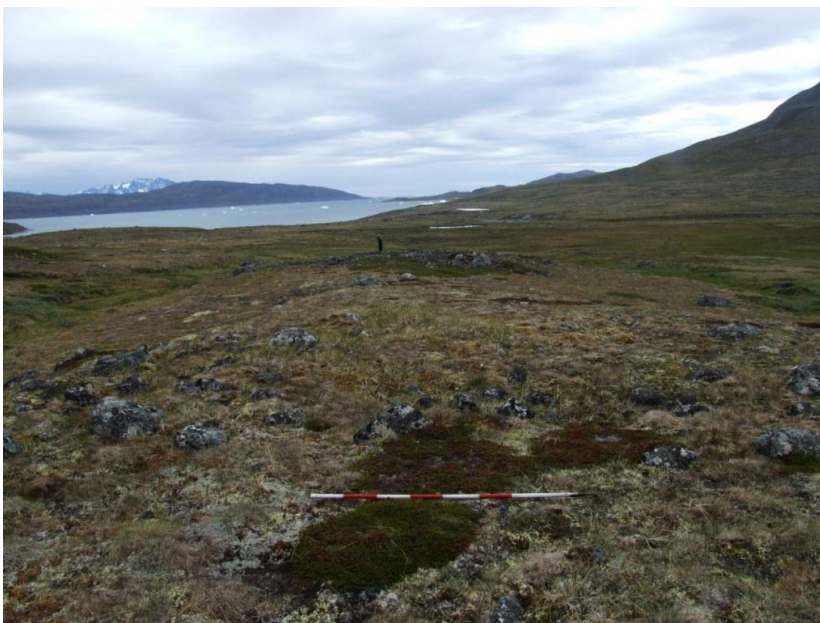


Fig.27 Ruin 07 seen towards the SSW with the northern end of ruin 05 in the background. Photo: C.K. Madsen 2009.

R07: Foundation for a rectangular, c8x3,9m, stone/turf built *outhouse* (fig.27). The ruin is fairly collapsed and the walls/foundations show themselves as c.80cm wide and c.20cm high banks of turf with many protruding, rounded stones, enclosing a slight depression overgrown with grass, moss and crowberry. The rest of the walls have undoubtedly been in turf, since no fallen stones otherwise lie about.

R08: Remains of a rectangular structure, c.8,4x5,6m, very much like R07, but not as well preserved. A clear partition wall can be seen approx. in the centre of this *outhouse*. Quite a few collapsed stones lie scattered about the ruin, especially at its northwestern corner.



Fig.28 Ruin 09 seen towards the SW.

R09: Stone/turf built, but fairly collapsed, structure of roughly rectangular shape and measuring c.15,5x5,7m and with a small extension approx. midway on the SW wall. The walls are fairly distinct, about 1m wide and standing 10-20cm high. Judging from the amount of collapsed stones, this building, probably some kind of *stable/barn complex*, must have been built mostly in turf. Overgrown with grass and a touch of moss.

R10: Very indistinct and collapsed building measuring c.7,5x5,9m and with walls/foundations c.40cm wide and up to 20cm high of mainly rounded stones and bits of turf. This *outhouse* must also mainly have been constructed in a perishable material. It is today overgrown with crowberry.

R11: Very indistinct and collapsed ruin of a c.12x8,2m large building, some kind of *outhouse*. It appears as a slight stone/turf elevation in the terrain and walls c.1m wide can occasionally be traced. In the central part of the ruin, where is a large amount of collapsed stones, a room can be seen. Vegetated by grass and moss.

R12: A somewhat collapsed, but fairly clear building of roughly square shape, c.8,1x6,2m. The stone/turf built walls are c.1m wide and preserved to a height of c.30cm, surrounding a depression (room) filled with many collapsed stones. *Outhouse* overgrown with birch and willow.

R13: An elongated, c.33,90x14,10m, indistinct structure, most probably a massive *byre/barn complex*, appearing as an elevation vegetated by grass and crowberry and with a great many protruding stones (fig.29). A few rooms and wall lines are visible on the surface, but the ruin is otherwise very hard to delineate. A small extension might be found along the western side of the building and just west of this, a probable midden area. F. Petersen excavated in this ruin and traces of a probable test pit, c.2x2m, may be seen in the SW part of the building.



Fig.29 Ruin 13 seen towards the WSW. Photo: C.K. Madsen 2009.



Fig.30 The well preserved southern gable of ruin 14. Photo: C.K. Madsen 2009.

R14: This is a somewhat collapsed rectangular ruin measuring c.10,6x6,2m. The stone build walls are fairly distinct, up to 100cm wide, preserved up to a height of 4 courses, c.110cm (the southeastern gable, fig.30). Judging from the amount of fallen stones, the dry stone walls could never have stood much higher than this and, unless the rest of the walls were in turf/wood, the structure might be an *enclosure* bounding c.48m². This interpretation is supported by a small room/division in the southwestern corner (for holding lambs/kids). Inside the ruin grows crowberry and birch.

R15: Smaller and nicely preserved (except for the southwestern gable) rectangular, c.6,2x3,8m, *outhouse* (fig.31). The stone build walls are c.1m wide and preserved in up to 3 courses (c.80cm). Like in the case of R14, the amount of collapsed stones does not allow for stone walls of much greater height and the rest of the building must have, if so, been erected in other material. Inside the structure grows birch and crowberry.



Fig.31 Ruin 15 seen towards the SW. Photo: C.K. Madsen 2009.

R16: Very collapsed, stone/turf built structure measuring c.9,2x7,6m. It is, apparently, a complex of several small rooms of which only a few are clearly distinguishable, because of the large amount of collapsed stones inside the structure. In the northwestern end of the building one sees two stone build rooms, perhaps a pen or a hay-yard? In the northeastern corner the remains of standing wall the courses high (c.60cm) is visible. Probably a *stable/barn complex*. Inside the ruin is vegetated by crowberry and birch.

R17: An indistinct, roughly rectangular stone/turf built ruin of some 18,3x7,5m, with a small extension on the southern wall. It mostly appears as a concentration of collapsed stones (with a few visible wall lines), although the northern wall and eastern gable are fairly clear (fig.32). R17 was by Bruun interpreted as part of R05 and although this now seems highly improbable, the two buildings might have been connected by a wall/dike, linking the eastern side of R17 with the southern end of R05. The ruin is vegetated by crowberry and grass.



Fig.32. Ruin 17 (farthest away) and ruin 05 (closest) seen towards the S. Note the “stone free” gap between the two structures.

R18: A small indistinct structure measuring c.5x5m, sketched by Bruun, but not interpreted surely as a ruin. Though appearing as nothing more than a heap of stones and faint trace of wall, it does, nonetheless, seem to be a small ruin. Vegetated by willow and birch shrub.

R19: On the top of a small, gravelly knoll some 300m east of the main cluster of ruins, one finds a small structure, c.2,7x1,7m, with 40cm wide walls/foundations lying in a single course. No collapse can be seen lying about and the ruin is hardly vegetated. *Outhouse.*

R20: The probable remains of the foundation for a small structure, now partially eroded away by the stream (fig.33). It appears as nothing more than a stone carpet measuring c.3,2x3,2m. Overgrown with willow.



Fig.33 Ruin 20 seen towards the NE. Photo: C.K. Madsen 2009.

R22: Down by the shore of the way, one finds an approx. square, c.5x5m, area carpeted with smallish, rounded stones. This must be the feature mentioned by F. Petersen and it could be the foundation for a Norse ruin of unknown type (boat house?). On the other hand, several Inuit features are found close by and R22 may be also be Inuit.

R21: Nicely preserved and roughly square *enclosure* measuring c.10,10x9,6m with walls in dry stone masonry, c.60-70cm wide, preserved in up to 4 courses (c.70cm) and incorporating several natural boulders (fig.34). On the north eastern wall is a c.65cm wide entrance. Judging from the lack of collapse stones, the wall must have had several additional “courses” in turf, to have been able to hold any sheep/goats. Inside the ruin grows crowberry, moss and birch.



Fig.34 Ruin 21 seen towards the N. Photo: C.K. Madsen 2009.

GPS: N 60°31'24.99"/ W 45°34'30.60". Earlier work Bruun 1895, Vebæk 1951



Fig. 35 Seaside view looking east towards the head of the fjord. The farm E94 is situated just under and to the right of the mountain knoll central in the picture.

Entering the small, approx. east-west oriented fjord of Serfartusok (i.e. “*the place with many black guillemot*” in Inuit, Bruun 1895;422), one encounters an impressive, but welcoming landscape: both sides of the fjord are bordered by mountains rising some 500-600m, but the lower slopes down towards the fjord are gentle and green, presenting fair grazing areas (fig.36), especially because they must have belonged to the single known Norse farm of the fjord (though lesser structures can easily hide on the lower slopes further out the fjord). This farm, E94, is found on a very gently sloping, fertile plateau (glacial outwash) at the head of the fjord, just in front of and protected by, a c.250m high mountain knoll that here separates the wide pass east of the farm in two (fig.35). Same pass affords easy access on foot E to Eqalugaarsuit (see below) and further NE to Kangerluluk (E93). The plateau west of the farm and the river appears somewhat drier. The beaches of the inner fjord are very shallow and at low tide, the silty ocean bed is exposed for several hundred meters. For a light boat, however, such a beach offers a fair landing.



Fig.36 Fig.22 180° view from just over the farm looking west out of the Serfartusok fjord. Photo: C.K. Madsen 2009.

In spite of the 19 individual ruins (fig.37), of which 13 were discovered in 2009, E94 is still to be considered only a middle sized farm (though perhaps towards the larger end). This assumption is based on the relatively average size of the main dwelling (R03) and because many of the ruins are lesser structures and several of them of the “improvised” type that normally characterizes the smaller coastal farms. The stable/byre complex (R01) is, however, sizeable and testifies to, at least, an average number of animal husbandry. At the same time, the limited number of large livestock buildings may signify that the farm of E94 focused not so much on this side of the subsistence economy, but rather on seal hunting, to whose migration routes it had excellent access. Also, we only spend c.4½ surveying the site and almost exclusively near the known ruins, in the area between the two rivers and over the mountain knoll and, thus, several ruins are perhaps still to be found on the northern plateau and on the slopes further out the fjord. In addition, a few Inuit structures were noted near the shore just under R18, but not otherwise recorded due to lack of time.



Fig.37 “3D” GoogleEarth plan of the ruins of E94, looking east. Note ruin 19, the lookout post and cairns, some way up the slope of the mountain knoll. In fig.37 the location of the ruins has been corrected for GPS displacement (see below).

Note: On GoogleEarth satellite images (fig.37), the homefield dikes are actually visible (see below) and from their position it would seem that for some reason (probably poor satellite signal) the original DGPS measurements of E94 seem to have been displaced some 60m to the east, though not on the vertical level (in reference to UTM/WGS84 coordinates). As the survey deviations within the ruin group internally seem to be only up to a meter, the location of all the ruins have been corrected according to the satellite images (fig.37).

Numbering after Bruun 1895.

R01: Ruin 01 is a large, c.30x20m, turf/stone built *stable/byre complex* lying just at the end of a low, well-drained ridge just north of the dwelling (R03)(fig.38,44). Several more or less distinct rooms and wall lines (in some places preserved in two courses) can be seen in this rather irregular building (sometimes in-corporating natural boulders) and especially in the northeastern end is a well-defined room (a stalling stone can be seen in the western



Fig.38 Ruin 01 seen towards the WSW.

end of the room – byre?) with turf/stone walls 100-120cm wide and preserved to a height of 40cm. The complex probably includes *byre, barn, hay-yard etc.* in one building. The ruin is overgrown with grass, moss and crowberry.

R02: Rectangular, 11,7x6m, stone/turf built structure, some kind of *outhouse*, fallen into considerable collapse and appears as small elevation with many smaller, rounded stones (fig.44). However, the eastern walls are reasonably clear, standing some 80-100cm wide and the outline of a room can be glimpse here. Vegetated by crowberry.



Fig.39 Ruin 03 seen towards the SW.

R03: Approx. 27x23m large, indistinct farm mound, or *dwelling* appearing as an elevation with uneven, grassy surface with many depressions, protruding stones and a few visible wall lines/rooms (fig.39). Because of its state of collapse, the ruin is very hard to outline precisely, especially down the slope to the west, where it merges with the midden area.

R04: Very collapsed, and partially eroded, rectangular structure measuring c.9,2x4m. Built in stone/turf, the walls are still fairly distinct, c.100cm wide and preserved to a height of 20-30cm, and likewise two internal rooms are clearly visible. The southern gable is partially eroded by a slope that has been eaten away by the stream, but comparing with the old plans of the ruin and looking at

the vegetation, this erosion has basically stopped. In the natural section produced by the erosion one could easily retrieve datable material. The ruin is vegetated by grass and crowberry.

R05: Distinct turf/stone built *outhouse* (based on its position just outside the homefield dike probably a *sheep/goat shed*)(fig.40). It measures some 9,2x5,4m and has walls 120-140cm wide and preserved to a height of c.50cm, though the southern end is somewhat more indistinct. Two central rooms are



Fig.40 Ruin 05 seen towards the W.

clearly discernible. The northern corner of the building is eroded by sheep and allows for observation of building technique (as well as future retrieval of datable material)(fig.41); the walls seem to be double-faced with a foundation of massive rounded boulders and core and upper structure of turf. The ruin is overgrown with grass and Alpine Lady's Mantle.



Fig.41 The eroded northwestern corner of ruin 05.



Fig.42 Ruin 06 seen towards the W.

R06: Very collapsed, approx. rectangular, c.12,75x8m, stone/turf building, now preserved mainly as a concentration of smaller rounded stones (fig.42). Judging from the amount of collapse, it must have been chiefly a turf building, perhaps some sort of *stable/barn structure*, because of the buildings width (two rooms are visible in the eastern side) and because of a small rounded, but indistinct addition on the western wall (perhaps a *hay-yard?*). The outer wall lines are fairly distinct, as is especially the southern room where an upright stone slap (stalling stone?) can be seen. The building is being eroded by the nearby stream, but as in the case of ruin 04, the erosion seems to be very slow. Datable material could in the future be retrieved from the natural section. The ruin is vegetated by grass and crowberry.

R07: Relatively well preserved dike (*homefield dike*) that consists of rounded boulders placed in a line thus creating a c.60cm wide barrier (with considerable gaps in between). The dike can be followed north for c.25m, before it disappears into a small boulder field, but reappears on the other side as ruin R13 and these two stretches must have been connected. The stream to the south must form the S end of the dike.

R08: Small turf/stone built structure, some *outhouse*, measuring only c.3,3x2,3m (fig.44). The structure is to the NE partially dug into the slope, but where the walls are clearly visible, they are c.60cm wide and up 40cm high, surrounding a slight depression that is the central room. Vegetated by grass and crowberry.

R09: The northernmost building on the low ridge with the concentration of outhouses is a tiny, c.2,8x2,7m, room between two natural boulders connected by distinct 60-70cm wide and 40cm high turf/stone walls (fig.44). *Outhouse or animal shelter?* The ruin is vegetated by grass and Alpine Lady's Mantle.

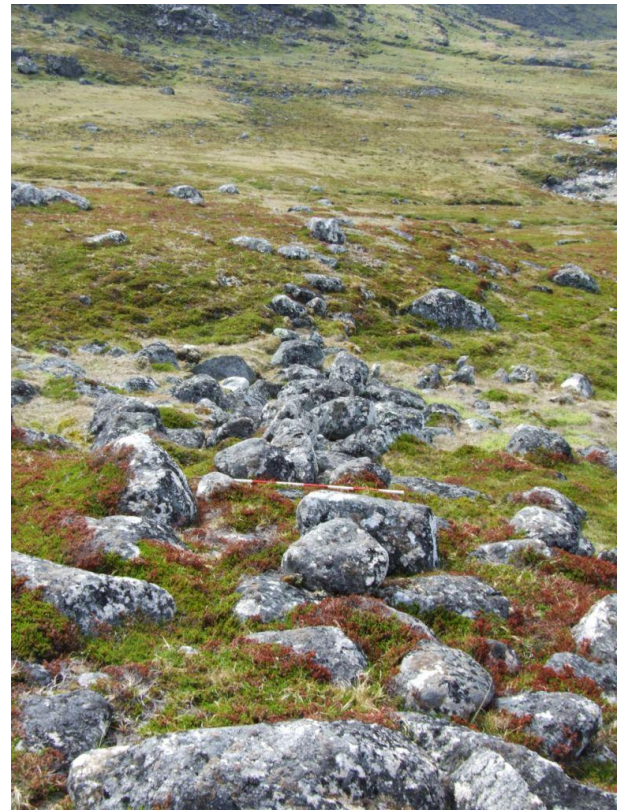


Fig.43 Home field dike, R07, seen towards the SW.

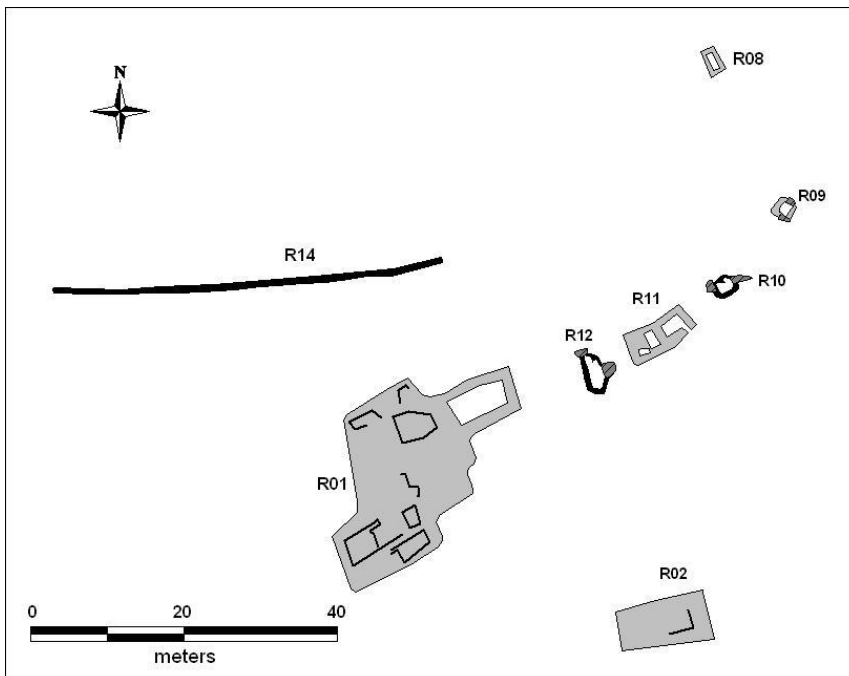


Fig.44 Detail situation plan of the ruins on the low ridge (see text).

with many rounded stones that fairly distinct outline the turf/stone walls of the building, c.60-80cm wide. Two rooms, one with an entrance, area clearly visible in this *outhouse*, maybe another *sheep/goats house with barn*. Vegetated by grass and Alpine Lady's Mantle.

R10: Like R09, R10, possibly a small *enclosure* or *animal shelter*, is of a somewhat improvised type incorporating several natural boulders/cliff faces (fig.44). A small turf/stone wall, c.80cm wide, encloses an area of about 5m², between two natural boulders and a cut into the slope. Inside the wall grows grass and Alpine Lady's Mantle.

R11: Larger and approx. rectangular, c.9x4,1m, building lying on the ridge with the other outhouses (fig.44). Appears as an area

R12: This structure is very similar to R10 in type and means of construction, only slightly larger and enclosing some 10m² (fig.44, 45). It is, however, somewhat more indistinct and could be collapse from R11. Inside the wall grows grass and juniper.



Fig. 45 Ruin 12 seen towards the NE



Fig.46 Dike R13 seen towards the SW.

R14: Description like R13 (fig.44).

R15: Some 150m north of the homefield, one finds three separate buildings build against the lowest fallen boulders of the mountain knoll (fig.37). The first of these, R15, is a rectangular, c.6,8x4,1, mainly stone built structure (mostly rounded stones that have collapsed into the structure), probably a *sheep/goats shed* with a minor and less substantial pen or hay-yard added to its northern side (fig.47). The structure is beautifully preserved with dry stone walls 100-120cm wide, 60-70cm high and padded with turf on the outside. An entrance only c.55cm wide can be seen in the NE corner.

R16: The second structure at the edge of the mountain knoll is a semicircular wall build against a natural steep slope and thus creating an *enclosure* of c.22m² (fig.47). The walls are in turf/stone, c.120cm wide and preserved to a height of c.40cm. In the southern end is a stone built room/enclosure inside the structure and an entrance, c.40cm wide, can be

R13: *Homefield dike*, which appears from the edge of the boulder field in the south as a row of stones, but towards the north it changes into a low bank, c.20cm high and 80cm wide, with a few protruding stones (fig46). During the survey the dike was followed for some 70m, but in GoogleEarth satellite images R13 is clearly visible and it is even possible to trace the dike all the way up to just north of R01. It is completely overgrown with grass and crownberry.

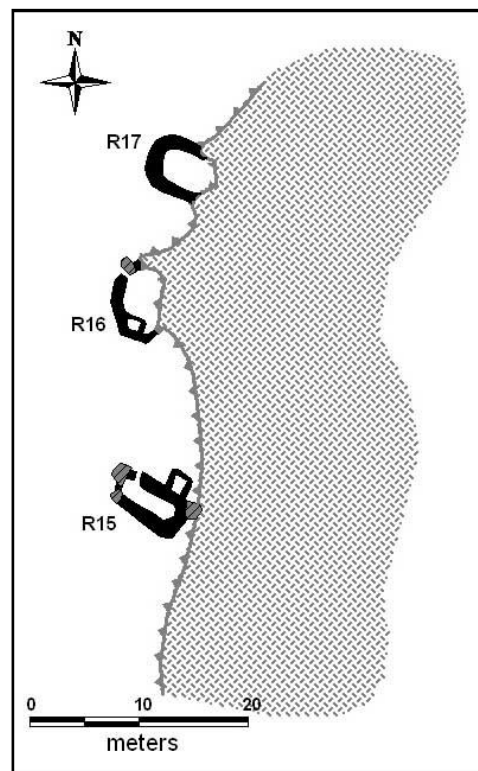


Fig.47 Detail situation plan of ruins 15-17.

seen in the northwestern corner. The inside of the pen is vegetated by grass and crowberry.

R17: The third structure build in the edge of the boulder field is likewise a *pen* or *enclosure*, also semicircular and measuring c.6,8x5,5m (fig.47-48). The wall of the structure is stone built, 100cm wide and preserved to a height of c.60cm (4 courses). Inside the structure grows grass and juniper.



Fig.48 R17 seen towards the S (by the person is R16 and farthest away on the ridge just above him, ruin 15).

R18: On the western side of the northern river (fig.37), one finds a stone foundation, c.80cm wide and up to 50cm high, for a rectangular building, an outhouse of some sort, measuring c.9,75x4,9m. The foundation is made mostly of larger angular stones, but the rest of the building most have been in turf or wood, as almost no other stone collapse can be seen. Especially the southern wall and the eastern gable are nicely preserved. Along the outside of the eastern gable is a small addition, probably a more recent

fireplace. Inside the foundation grows crowberry.



Fig.49 Ruin 19 seen towards the E. Photo: P.B. Heide 2009.

R19: On the top of the mountain knoll, marked by two cairns (see P.B. Heide separate report) lays a much collapsed small *shelter* or *lookout post*. It is build from very oblong and large stones, with walls c.30cm wide and preserved in up to 3 courses (c.40cm). The outer dimensions are c.2x1,2m and it exploits a small crevasse as room. The entrance to the room is from the W.

GPS: N 60°33'35.80" / W 45°35'37.38". Earlier work Bruun 1895.

From the skerries and open water, one sails east into the Akulleq Fjord (*“the middle one”* in Inuit, Bruun 1895;424) which heads this direction for the first approx. 5km. In this first half of its total length, the fjord is ringed by 500-650m high mountains, the slopes on the southern side sloping gently and fairly fertile from a shallow beach, the ones on the northern rising steeply and poorly vegetated from deep waters. After the first 5km, the fjord turns abruptly NNW and continues on for another 5km, but just at the 90° bend, on the eastern side of the fjord, one finds the farm E95. It lies just on the seaward edge of flat and narrow plain of glacial outwash coming down from the broad valley that lies between the mountains of Qaqqarsuaraarsuk and Qaqqarsuaq and provides an easy land passage to the farm of E93 (a distance of only c.4,8km) (fig.51). The gravelly beaches just in front of the farm provide easy landing for boats, although it is also the place where the massive summer drift ice finally beaches and melts, thus occasionally forming a barrier (fig.50). Apart from the normal coastal vegetation dominated by crowberry, birch- and willow shrub, considerable areas of grassland can be found in the landscape around the farm and, especially, in the broad valley east of the farm.



Fig.50 View out the fjord (west) from the beach just in front of the farm. Photo: C.K. Madsen 2009.

The locality of this farm does thus seem, if compared to other coastal farms, above average, except that it lies very exposed to the cool fjord wind coming in from the west. This location does, however, provide the farm with an excellent visibility both in and out of the fjord. The lack of a fertile homefield area at the site could owe to erosion by the sea, because the foreland is so flat (just a couple of meter A.S.L. and it is evident from the old plans and TH02 (see below) that even the recent erosion is considerable. In any case, the rather substantial dwelling and number of outhouses,

of which 7 were found in 2009 (and 4 Inuit structures), confirms with the assessment of E95 as a middle sized farm. In total, approx. 5 hours were spent surveying the terrain around E95 and seeing the very poor preservation of the outhouses at the site several building could still lay undiscovered. Because of promising results from the coring of the midden a 2x1m trench was excavated (see fig.52), though with disappointing results. A modern sheep enclosure and ruined house is found near the dwelling, though does not conflict with it.



Fig.51 A 180° of the landscape around E95 with the fertile valley east of the farm (left side) and the fjord to the west (right side). *Photo: C.K. Madsen 2009.*

The DGPS measurements proved, when transferred to GoogleEarth satellite images, to be misplaced some 30m to the east, though not on the vertical level. Ruin 02 is clearly visible on the satellite images and on the situation plan of the farm (fig.52) the original DGPS measurements have been corrected for this misplacement.

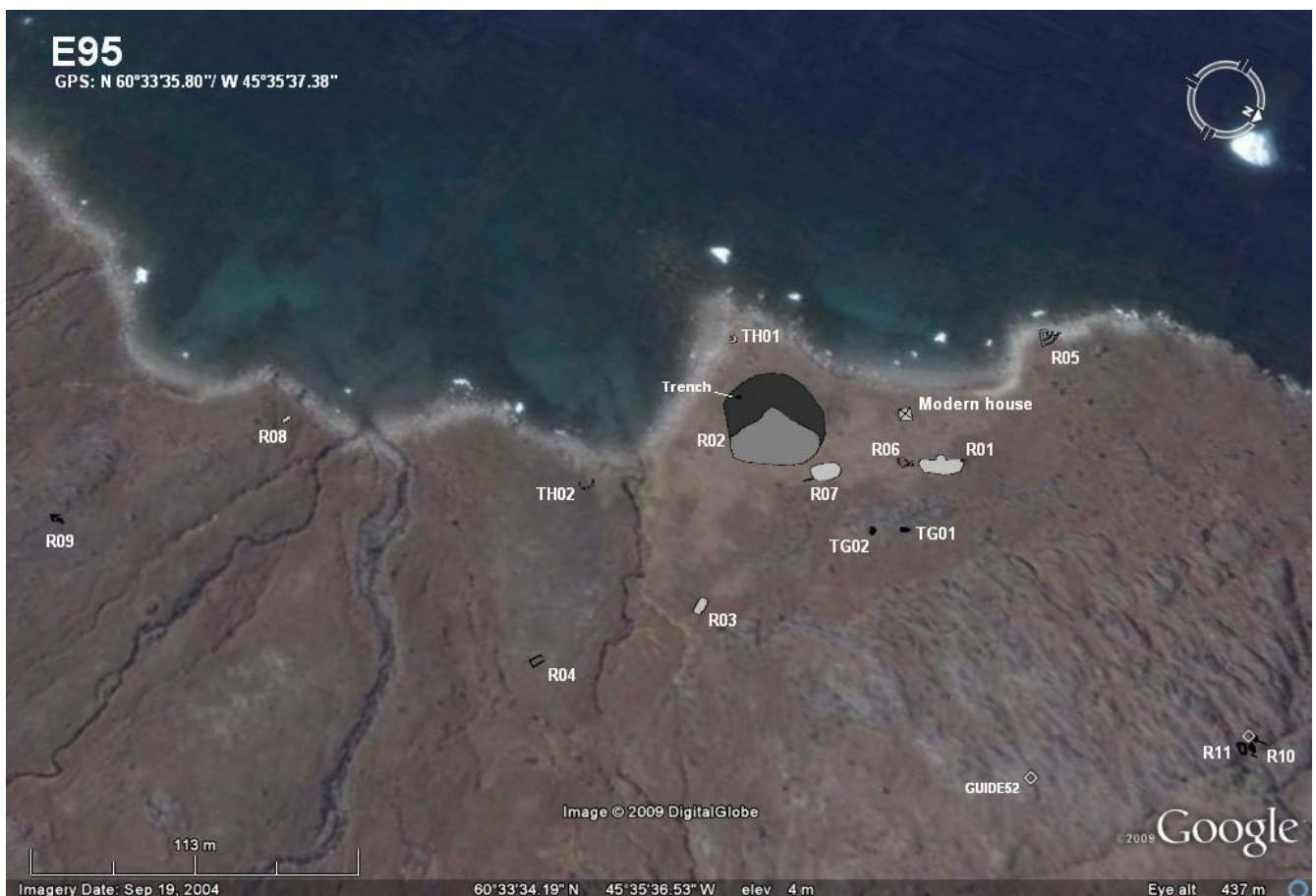


Fig.52 Situation plan of E95 on GoogleEarth imagery.

Numbering after Bruun 1895.

R01: Oblong turf/stone building with indistinct outer walls and measuring c.18,4x6,5m (fig.53). The ruin appears as low elevation vegetated by grass and crowberry, many protruding angular and rounded stones and many depressions (although no clear rooms or wall lines can be distinguished). On the southwestern wall a semicircular extension can be seen in the form of a depression bordered by a stone/turf build wall (partly natural boulder). This is maybe a *hay-yard* (?) to what is probably a *byre*.

R02: Large turf/stone ruin, certainly *the dwelling* of the farm, measuring some 36,7x20,5m. Located at the base of a small isthmus, R02 appears as an actual, grass-covered farm mound rising about 1m above the surrounding terrain. Several marked depressions, undoubtedly rooms, wall lines and protruding angular stones are visible on the surface. Especially to the west the outline of the ruin is hard to distinguish, as it here merges with and have overlapped the large midden area (see dark area in fig.52).



Fig.53 The isthmus with R02, R07 and TH01 seen towards the WNW. Ruin 02 is the greener, uneven terrain central in the picture and left of the modern enclosure. Photo: C.K. Madsen 2009.

R03: Very indistinct and collapsed stone/turf building of rectangular shape, c.7x3,8m, which mainly shows as 2 20-30cm deep depressions bounded by angular stones (foundation). *Outhouse*. The ruin is vegetated by grass and crowberry.

R04: Stone foundation of a rectangular building, c.5,2x2,9m. The foundation, c.30cm wide and 10-15cm high, of this *outhouse* consist of single lines of rounded stones, while the rest of the building must have been in a perishable material. Only the two long walls and the southern gable are clear definable and it is to access whether the about lying stones are natural or collapse. Vegetated by crowberry.



Fig.54 R05 seen towards the S (the isthmus in background). Photo: C.K. Madsen 2009.

R05: Very collapsed and indistinct stone/turf structure that is being eroded away by the fjord (fig.54). It appears as a shallow depression and several low walls, c.30-50cm wide and up to 20cm high, of angular stones and bits of turf. It could be a *sheep/goat stable* with added *hay-yard/enclosure* or can otherwise only be described as an

outhouse of unknown function. It possible, in the future, to extract datable material from the natural section eroding away. Overgrown with grass and crowberry.



Fig.55 Ruin 06 seen towards the S. Photo: C.K. Madsen 2009.

R06: Possible tiny, almost square, stone foundation for a building measuring c.2,2x2m, small *outhouse* or maybe an *enclosure* with separation for lambs/kids?. The eastern wall of the structure is constituted by a small, natural boulder, whereas the rest of the possible wall lines can be seen as rows of single rounded stones. In southern extension of this structure is an atypical shaped feature, maybe the main *enclosure* bounding some 11m² with very indistinct, c.30-40cm wide and up to 20cm high, turf/stone walls surrounding a slight depression. Overgrown with grass.

R07: Very indistinct turf/stone built building, roughly rectangular (c.12,5x7,3m) just east of R02, which it resembles very much both in appearance and vegetation, though they are definitely separate (fig.53). It is probably some kind of *staple complex*.

R08: Slightly misplaced on the situation plan (fig.56), one finds R08 at the very tip of the second small isthmus west of the one with R02. Rather atypical, it mostly consists mainly of a small area, c.4x2m, covered by stone slaps. This could be a Thule culture feature, but cannot be excluded as the floor of some unknown Norse building (*boathouse?*).

R09: Placed some 300m south of the main cluster of buildings, one finds a small *shelter*, c. 2,6m² (inside



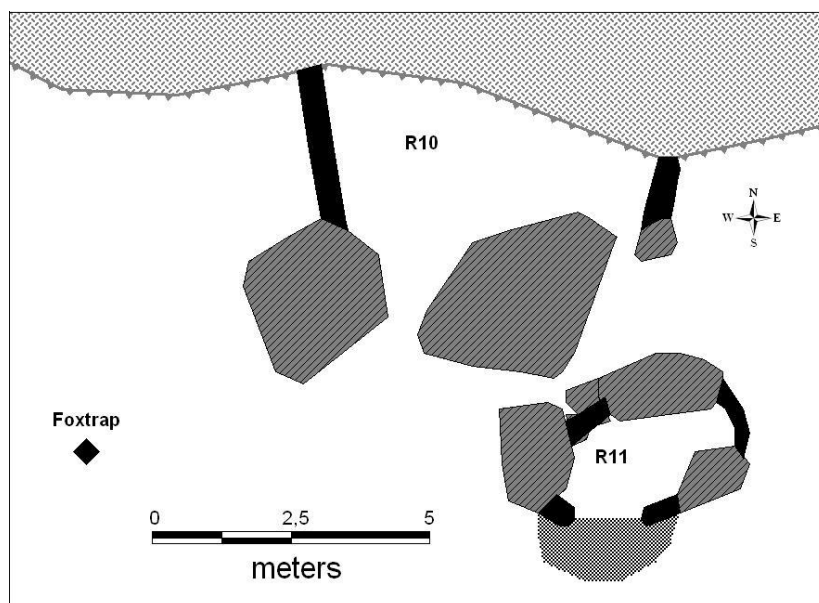
Fig.56 Ruin 08 seen towards the W. Photo: C.K. Madsen 2009.



Fig.57 Ruin 09 seen towards the SW. Photo: C.K. Madsen 2009.

dimensions), built in a hollow between natural boulders (fig.57). In one place the connection stone walls are preserved in 2 courses (c.30cm), but it otherwise very collapsed.

R10: Up on the top of the low cliffs some 200m northeast of the farm is two close lying structures (fig.58-59). Of these R10 is an enclosure formed by building stone walls across and along a c.1-2 wide, shallow gorge. The walls, thus forming a roughly rectangular pen of c.6,7x3,3m, are c.50cm wide, preserved in up to 4 courses (c.70cm). The entrance to the enclosure seems to be between two large boulders on the southern long wall.



R11: Small *sheep/goats shed* or *enclosure* just a few meters S of ruin10 (fig.58, 60). The walls of this structure are more collapsed and visible mainly as 1-3 stone built courses on top natural boulders that have formed part of the structure (c.100cm high all in all). The entrance to the c.3,9x2,4m large structures has been from the south, where one also finds a heap of collapse. The building/pen seems to have been divided in the middle (though this was not measured). On a flat cliff just above these two structures there is a well-preserved foxtrap.



Fig.59 Ruin 10 seen towards the E. Photo: C.K. Madsen 2009.



Fig.60 Ruin 11 seen towards the N. Photo: C.K. Madsen 2009.

TH01: Small, partly eroded turf structure, undoubtedly Thule culture, though otherwise indistinct.

TH02: Partly eroded, trapezoid Thule-culture summer dwelling. The fact that this has been partly destroyed by the fjord shows that some erosion must have taken place in the last couple of hundred years.

TG01: Large, well-build and apparently fairly old Thule culture grave.

TG02: Do.

GPS: N 60°35'54.43"/ W 45°38'23.28".

At the very head of the aforementioned Akulleq fjord, low mountains (100-200m) crown a horseshoe-shaped, southern facing valley. The slopes of the valley that rise gently from a gravel beach are fairly green with considerable patches of grassland, but otherwise completely dominated by crowberry, willow and birch shrub (fig.61). Approx. in the middle of this very sheltered valley one finds E95a, a farm that has not been described since 1894 (where it is simple mentioned and not described at all). From E95a there is easy passage S along the shore of Akulleq to E95 and through the low, wide pass to the NW there is only about 4,3km to E326, which might even have been a shieling belonging to E95a. The shallow beach in front of 95a provide easy landing for boats and, as were noticed during the survey, is a spawning ground for Ammaset.



Fig.61 180° view of the homefield area and out of the Akulleq Fjord from just in front of the dwelling (R01). Photo: P.B. Heide 2009.

In total, c.5½ hours were spent surveying E95a and 14 ruins were identified, surveyed and described (see below). From these E95a seems to have been a small to middle sized farm; the dwelling is rather small in area, the presumed byre likewise and even though there are a considerable number of ruins, several of these are enclosures and shelters, not outhouses proper. However, it is very certain that several ruins are still hiding in the area, especially on the SW of the streams and among the shrub; for instance a number of possible ruins could subsequently be seen on



Fig.62. GoogleEarth satellite image with indication of areas with possible, unregistered ruins.

GoogleEarth satellite images (fig.62). Most interesting among these is a possible dike running perpendicular to the direction of the streams. Also visible on satellite images was ruin 10, which in fig.63 was used to correct a slight misplacement of the measured ruins. Speaking in favor of an interpretation of E95a as a middle sized farm is the quite extensive and fertile homefield (c.9000m²) in front of the farm (fig.61).



Fig.63 Situation plan of the all the ruins of E95a on GoogleEarth satellite imagery. The thin black line outlines the presumed homefield.

R01: Of somewhat irregular shape and very hard to outline precisely, this ruins is a low farm mound measuring c.22x18. Visible on the surface of the slight elevation are many protruding stones, as well as several possible rooms and wall lines. Especially towards the N, W and E the ruin is hard to delimit, whereas to south the lush field forms a quite distinct boundary. The ruin, undoubtedly the dwelling, is vegetated by grass and moss.



Fig.64 View of the valley with E95a seen towards the SW. The ruins are on the N side of the stream. Photo: P.B. Heide 2009.

R02: Just 4-5m north of R01, but clearly separate from it, is a roughly rectangular pile of mostly angular stones measuring, c.5,8x4,5m, surrounded by low turf walls. This is certainly the remains of stone/turf structure, an *outhouse* of some sort, possible a *stable*. The ruin is overgrown with grass and moss.



Fig.65. Ruin 03 seen towards the NW.

R03: Just east of R02 one finds what is probably the foundation for a rectangular, c.7,5x4,3m, building, an *outhouse* of some sort (fig.65). Apart from a few stones and natural boulders forming the shape of the foundation (single row of larger rounded stones lying up to some 50cm apart), no collapse can be seen and the rest of the structure must have been built in turf. A possible entrance can be seen in the SW corner. Vegetated by grass and crowberry.

R04: Very indistinct and collapsed stone/turf ruin appearing as an uneven surface with many protruding rounded stones (fig.66). It is the remains of some *outhouse*, roughly rectangular in shape, c.7,6x6,1m, and incorporating several natural boulders. In the northern end of the structure is a clearly visible room and along the western wall, one can make out a wall foundation c.50cm wide and preserved up to a height of c.30cm. Also the southern gable is reasonable distinct. Vegetated by grass and Alpine Lady's Mantle.

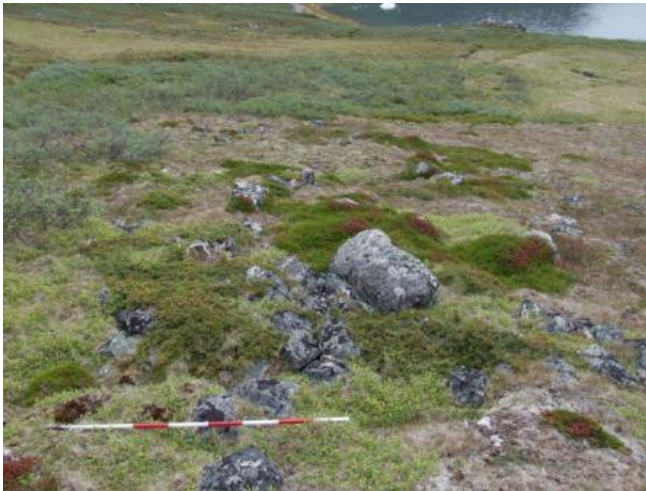


Fig.66 Ruin 04 seen towards the S.



Fig.67 Ruin 05 seen towards the NE.

R05: Collapsed and somewhat indistinct stone/turf built ruin, roughly rectangular in shape and measuring c.5,15x4,3m. Two rectangular depressions, possible rooms, seem to hint that it is a *sheep/goast shed* with walls c.50-70cm thick, though almost level with the surrounding terrain. The ruins is vegetated by grass, moss and Alpine Lady's Mantle.

R06: Very distinct and well preserved turf/stone structure, an *outhouse* of some sort, possible another *sheep/goats shed* (based on the extending dike), measuring c.8x5,3m, and with walls c.100cm wide and preserved up to a height of c.40-50cm. The western gable is partly made up of a natural boulder, while a possible entrance can be seen in the eastern. A possible wall extends from the southern wall. The ruin is overgrown with grass and almost hidden by knee high willow shrub.

R07: Stone built *enclosure* of somewhat irregular shape and partly build up against natural cliff sides and incorporating natural boulders. Otherwise, the walls mostly consist of upright stone slaps forming a c-40-50cm wide and up 50cm high barrier. The pen encloses some 61m² and this area is vegetated grass and knee high birch and willow shrub.

R08: Very well preserved stone build *enclosure*, roughly rectangular (c.13,9x8,5m) lying in the edge of the boulder field coming down from the mountain and partly exploiting some of these naturally positioned boulders (fig.68). The walls are c.80-110cm wide and preserved in up to 4 courses (c.180cm). The enclosure is divided into two parts; a larger eastern one (c.64m²) which has a clear entrance in the SW corner and a smaller western one (c.19m²) with no apparent entrance. Inside the enclosure grows birch, willow and crowberry.



Fig.68 The eastern part of R08 seen towards the NW.

R09: Small *shelter*, c.2,5m², lying halfway under a large boulder. A small wall is build in front of the boulder.



Fig. 69. Ruin 10 seen towards the S.

R10: Beautifully preserved *enclosure* of somewhat uneven in shape and bounding an area of c.313m² (fig.69). The walls are in some parts stone build, 50-100cm wide and preserved up to a height of c.100cm (3 courses), in other parts made of large boulders. There is a clear entrance in the western wall. Inside the structure grows willow, birch, grass and crowberry.

R11: Well preserved stone built *enclosure* lying, just like R08, just in the edge of a boulderfield and incorporating some of these natural boulders. It is roughly rectangular, c.6,3x5m with walls c.60cm

wide and preserved in up to 3 courses (c.100cm). The entrance is on the SE wall. Inside the ruin grows willow and crowberry.

R12: Quite collapsed stone/turf build ruin, some *outhouse*, lying west of the main cluster of buildings on a low, well-drained ridge. It appears as a rectangular shaped area, c.4,9x2,7m, with protruding angular stones and a central depression in the surface (room). Especially the northern is reasonably distinct and allows for the observation that the walls are some 50cm wide and preserved to a height of 10-20cm. The ruin is vegetated by grass, crowberry and juniper.



Fig.70 Ruin 13 seen towards the SE.

R13: On the same dry ridge as R12, one also finds R13, a well defined rectangular, ca.11x4m, stone/turf built structure, most likely a small *byre with hay barn*. The walls are c.50-70cm wide and preserved to a height of c.40cm. A clear partition wall preserved in 3 courses is visible centrally in the ruin. SW of this wall is a clearly outlined room, NE of the wall rather a slightly concave “carpet” rounded stones that must, nonetheless, represent a second room. The ruin is overgrown with willow and grass.

R14: Totally collapsed and very indistinct stone/turf built ruin, approx. rectangular (c.8,7x4,7), an *outhouse* of some sort, possibly a *stable building*. It appears as a patch of uneven terrain with many protruding, mostly angular, stones (fig.71). The ruin is vegetated by grass, moss and juniper.



Fig.71 Ruin 14 seen towards the S.

GPS: N 60°34'41.34" / W 60°34'41.34". Earlier work: Gulløv 2000.

On the eastern side of the deep watered straight of Qaersup Kangia, before one to the north enters the shallow basin of Sannerut and the Torsukattak Fjord, the slopes of the mountain Kiinaaliitaa (730m) in their northern part become relatively gentle and wide, allowing for patches of reasonable grassland, stretches of wet marshland and many small lakes (fig.72). Here, at the bay of Pamiallup Illukua, lies the small Norse farm E95b of which there exist no newer record other than a simple note by Bruun (1894:424)(fig.74). The farm itself lie on a small patch of relatively flat grassland no more than c.100m from the ocean, where there is a small and sheltered stony beach that provide excellent landing. Just to the north, the farm is sheltered from the north wind by a low ridge and to the east by Kiinaaliitaa. Several Inuit winter structures are found on top of and next to the Norse, testifying that this spot is quite suitable for winter habitation and hunting.



Fig.72 180° view of the landscape just north of E95b (which is just on the far side of the low ridge coming down to the fjord on the horizon. *Photo: C.K. Madsen 2009.*

In the course of c.3½ hours, 10 structures and possible structures were surveyed at Pamiallup Illukua (hereof 5 presumably Norse, 5 Inuit). The Norse structures give an unmistakable impression of the very smallest of farms and, unless it is a very early and short-lived site, most probably a shieling. The landscape just around the farm has rather poor grassland, even compared to other coastal areas. Although at least some land must have eroded away (one of the Thule-culture communal houses, c. A.D. 1750-1850, is beginning to erode away), the location can thus hardly



Fig.73 View of the Pamiallup Illukua bay seen from the ridge just north of the farm. *Photo: P.B. Heide 2009.*

have been chosen for its grazing land, this even though the slopes just north of the farm are a bit more fertile (fig.72). The location of this farm, which is further attested by the presence of the Inuit structures, might instead have chosen for an easy access to seal hunting and/or fishing grounds. Since it is probably not a farm proper, it could have belonged to either E95a, which has relatively easy access to the place by land, or E190 just on the other side of Qaersup Kangia.

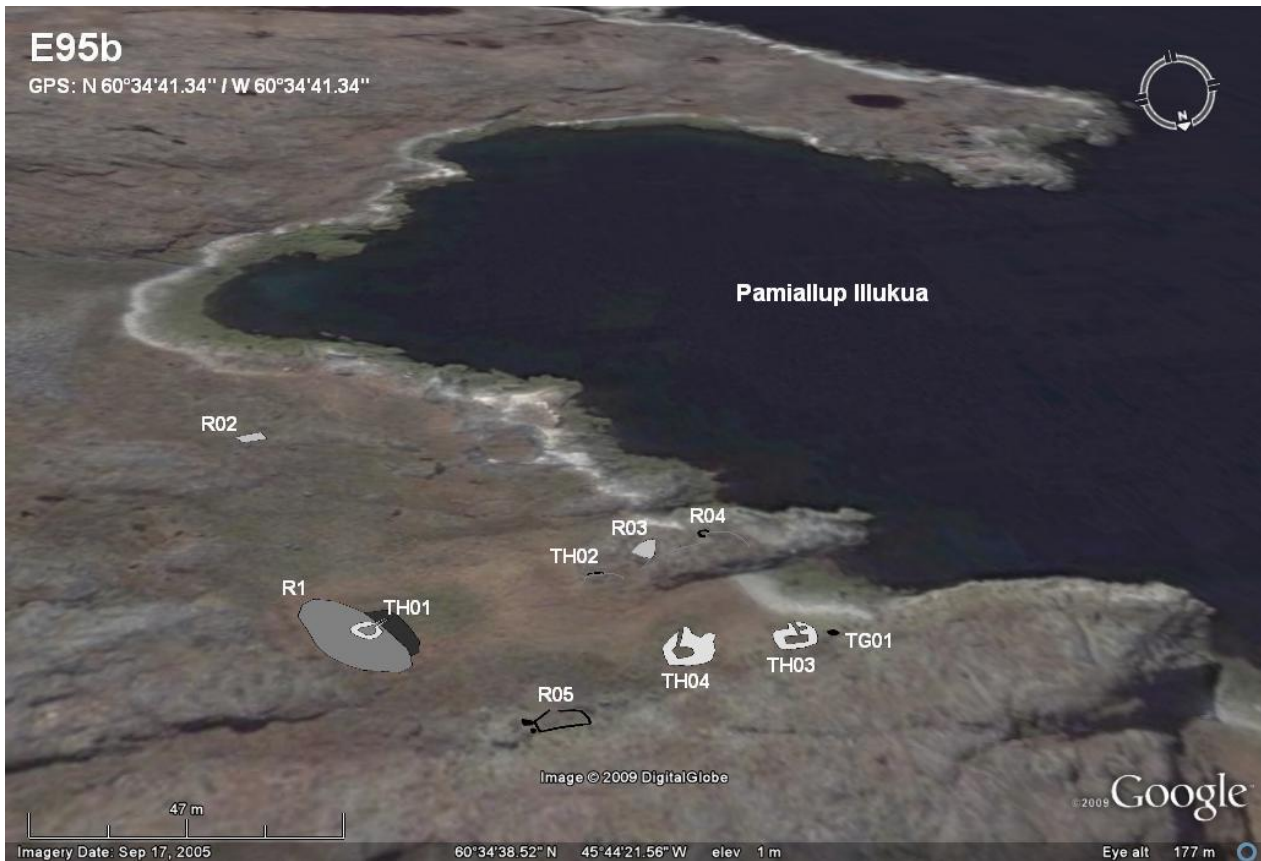


Fig.74 GoogleEarth view, slightly angled, of E95b and the bay of Pamiallup Illukua seen towards the S.

R01: Approx. oval shaped (c.31,5x15m) and grass covered turf/stone farm mound (*dwelling*) with indistinct boundaries. Visible on the surface of the ruin is many depressions and protruding stones. West of the structure, where it is especially hard to delimit, collapse mixes with midden material. Just about midways on the western side of the ruin, dug slightly into both this and the midden/collapse area, is a trapezoid (?) Thule-ruin (TH01). Just behind this ruin is an old square pit, c.130x130, possible a test trench?



Fig.75 Ruin 02 seen towards the SW

R02: Possible, but uncertain rectangular stone foundation, c.7x4,4m, within which is a considerable amount of small and large (collapsed) stones. It could alternative be a natural formation?

R03: Indistinct and somewhat irregular (almost triangular), c.9,1x5,1m, turf/stone ruin lying on a cliff very near the coast (fig.76). 3 very small, but distinct rooms can be seen in the ruin, which has walls c.40cm wide and preserved to a height of 30cm. Judging from the grass vegetation and preservation, it is possibly a Thule-culture structure, but in that case of unknown type. Alternatively, it could be a Thule-culture reuse of a Norse ruin.



Fig.76 Ruin 03 seen towards the SW.



Fig.77 Ruin 04 seen towards the SW.

R04: Stone build semicircular wall (foundation) build against a low clip (fig77). This ruin, perhaps a small *pen/shelter* enclosing only some 5,30m², has very collapsed walls measuring c.50cm in width, but barely rises above ground level.



Fig.78 Ruin 05 seen towards the WSW.

R05: Very uncertain ruin in the small boulder field just under the low ridge (fig 78). Especially in the western are the probable wall lines visible, though incorporating natural boulders. The southern wall is much more indistinct and one can just barely glimpse a wall line. The ruin vegetated with grass, willow and crowberry.

TH01: Circular Thule-culture hut placed in and slightly dug into R01.

TH02: Stone build meat caches, Thule-culture.

TH03: Stone built meat cash, Thule-culture (between R03 and R04, but not depicted).

TH04: Very well preserved Thule-culture communal house with internal cooking niche and a hint of the bench.

TH05: Well preserved Thule-culture communal house. In the main room is a square of larger stones, perhaps a more recent addition. East of the ruin is a couple of low, grass covered elevations, which might be part of the ruin.

TG01: Well build Thule-culture grave with preserved bones, c.3x2m (fig.79).



Fig.79 Bones in grave TG01.

GPS: N 60°39'4.30" / W 45°47'51.41". Earlier work: Gulløv 2000.

During the preparation for the field season of 2009, no record of this ruin group could be found in the archives of the National Museum of Denmark. Thus we set forth with only a dot on the map; from this the ruin is supposed to lie on the northern side of a small inlet at the eastern end of the island of Kangeq, where the coast forms a small isthmus. Visiting the isthmus, it actually did seem just the type of place, where one could expect to find Norse presence; lying sheltered on the southern side the mountain Sarfarmiut, the isthmus has a fairly good natural harbor and the isthmus has reasonable grass vegetation (fig.80).

We spend approx. 3 hours looking for the ruin group at the place where it was marked on map and in the surrounding area (both sides of the isthmus and on the southern side of the inlet), but never



Fig. 80 Looking S out the isthmus where E118 should be located according to the map. The Inuit ruins are found near the slope left in the picture.
Photo: P.B. Heide 2009.

found any ruin of Norse character. However, on the southern side of the isthmus (fig.80) one does find a number of Inuit structures, among these at least 3 communal houses and a well-build meat cash/grave, plus a number of other features.

During work on the 2009 field report, an earlier survey report of the site by J. Berglund (1980) was found (though in Greenlandic writing). He mentions 7 Norse ruins at the site. At least some of these were inspected in

2009 and interpreted as Inuit. Others may have been overlooked or interpreted wrongly by either party.

GPS: N 60°50'3,4152"/ W 045°20'41,1288"

Earlier work: Møller&Madsen 2006, Vebæk 1992.

During the 2006 survey of E167 a new ruin was located, but unfortunately not surveyed. In 2009 the ruin group was briefly revisited and the new ruin surveyed.

Numbering after Vebæk 1992.

Ruin 16: Approx. 250m's east of the dwellings is a small lake and protruding into that lake is a small rocky peninsula (fig.81). Cutting all the way across the c.50m wide head of the peninsula and thus creating a large *enclosure*, one finds a very well preserved mainly turf build dike (only a few stones are visible), about 1,5-3m wide at the base and 80-100cm's at the top, standing up to a height of c.80cm's (fig.82). Especially the two ends of the dike a beautifully preserved, whereas the middle section is somewhat more collapsed (an entranced might be found here?) and the thickness of the wall harder to estimate, as the dike here seems to have been "dug" into the sloping terrain. Hence, the western side of the wall is more "flat and sloping", the eastern side (holding in the animals) more steep. The fold encloses c.2000m² and the dike is vegetated by grass, willow and moss.



Fig.81 The rocky peninsula w. ruin 16 seen towards the ESE (in the foreground ruin 7).

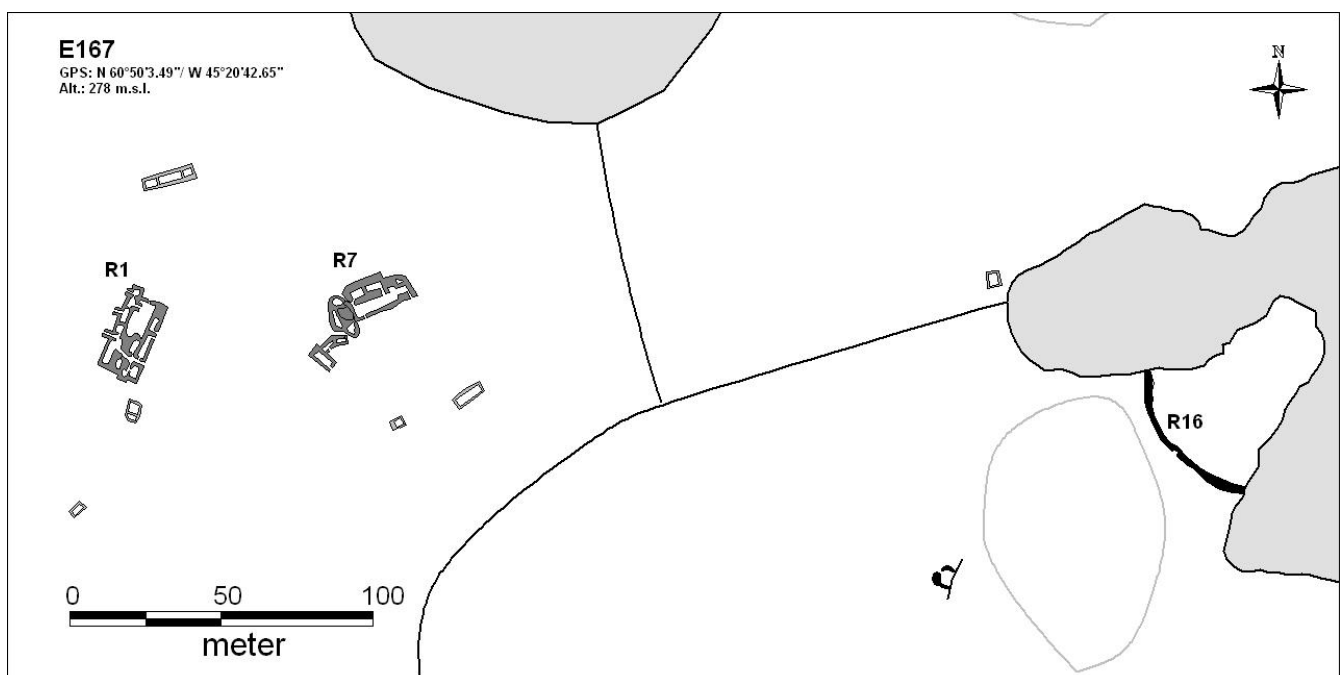


Fig.82 Overview of E167 and the newly surveyed R16.

GPS: N 60°48'26,0244"/ W 045°31'46,0272": Earlier work: Møller&Madsen 2005, Møller *et al.* 2007.

E172 was first surveyed in 2005 as part of the Vatnahverfi Project, but during the excavation of the midden by ruin 10 in 2009, new ruins and features were located and surveyed. Furthermore, information from the present owners of the summerhouse at the site, Kristian and Kathrine Isbosethsen, allowed for the reinterpretation of some formerly uncertain features; E172 was previously the site of a sheep farm and both some of the Norse ruins and the around lying area have been disturbed by farming activities and recent buildings (some of which have again been removed by the present owners).



Fig. 83 The cove w. E172 seen towards the SW. Photo: P.B. Heide 2009.

The majority of the ruins of E172 lie around a small cove (fig.83) about half way out the Igaliku Fjord, a place which may be considered the entrance to the valley that runs SW-NE through the entire length of central Vatnahverfi. Deposition of alluvial silt from the glaciers coming down from the icecap is clearly visible in the eroded seawall on the beach and must be the main contributing reason for the considerable thickness of

the soils and apparent productiveness of the immediately surrounding grassland. The shallow waters of the beach provides excellent landing for boats and from here it slopes gently up towards the east, finally meeting up with the large lake of Tasersuaq. All along the rocky coastline running in a southwesterly direction from the cove, one finds very fertile patches of grassland and meadow. In this direction there is relatively easy passage (1½-2 hour hike) to E78 at Eqluit. The landscape to the S of the cove consists of gently rolling hills with many small fertile valleys, before the terrain rises more abruptly towards the mountain of Eqluit Qaqqaa To the north of the ruin group, one finds a range of low hills running NE along the coast.

With the ruins discovered in 2009, E172 now numbers 21 Norse ruins in all and its interpretation as a middle sized farm in the smaller end of the scale must be reevaluated. Considering also the surrounding rich vegetation and easy access to the central Vatnahverfi via Tasersuaq, the relatively large dwelling, the many outhouses, E172 should probably be seen as a middle-large sized farm. Datings from the midden (Smiarowski 2007) also testifies to the existence of E172 from the landnám phase to the end of the settlement.

Approx. 12 hours was spent looking for new ruins in the area around E172 and it is reasonable to assume that most structures visible on the surface have been identified. It is, however, very likely that further smaller structures can be found along the shoreline down to Tasersuaq (boat house, storage building etc.), partly because this area was not surveyed in depth, partly because of the high vegetation of willow-birch shrub.

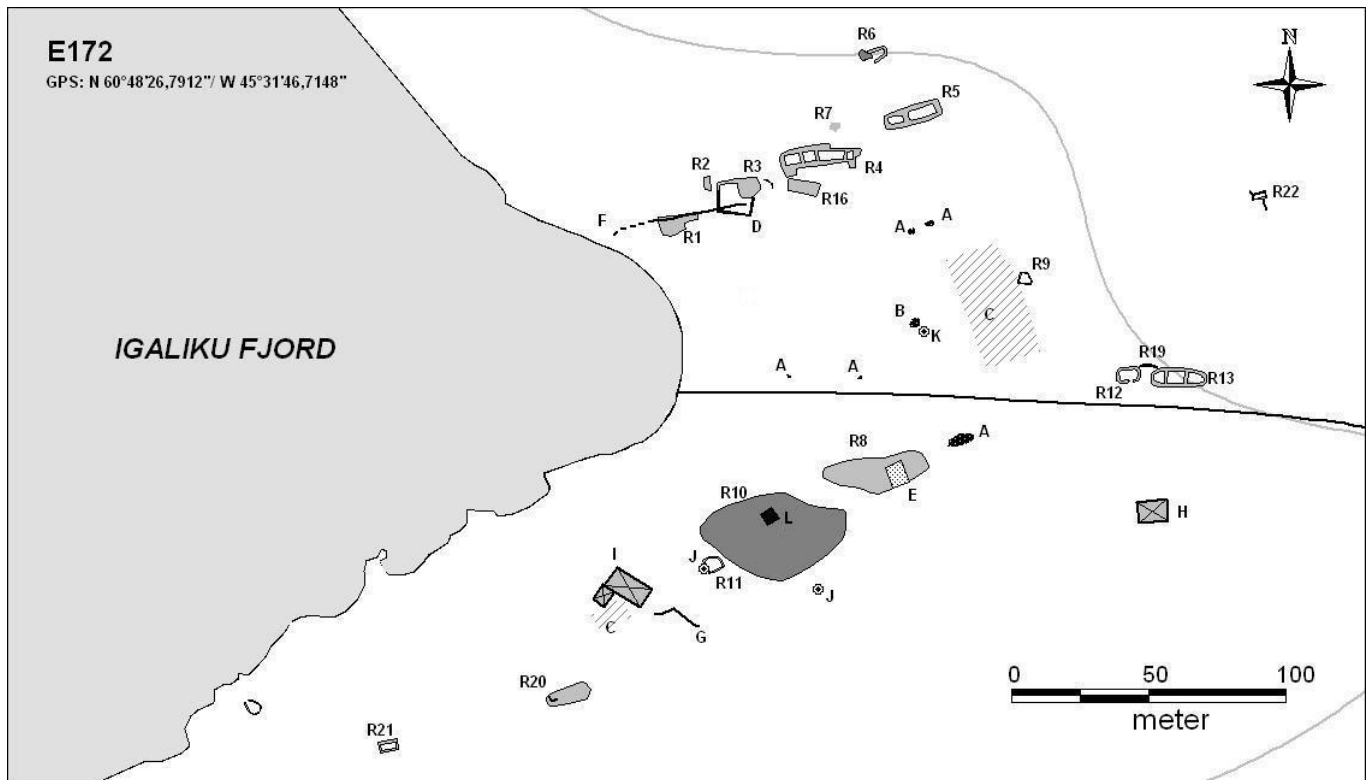


Fig.84 Plan of the surveyed ruins of E172. Note that some ruins are found outside the shown plan.

Numbering after Møller&Madsen 2005.

R2: This was in 2005 interpreted as a possible dwelling measuring c.16x13m. However, by information from the present owners, much of what was interpreted as ruin is actually the first garden established by the sheep farmer on the site. The outline of the garden is clearly visible to the south, but a bit hard to establish in the north part, where it cuts into the ruin of what must a turf and stone build *outhouse*, possibly a *stable building*. The dimensions of this building are hard to ascertain due to the disturbance from the garden, but must have been something like 16x7m.



Fig.85 R11 seen towards the N. Photo: C.K.Madsen 2009.

R11: In 2005 this was interpreted as a short stretch of dike, but in 2009 reinterpreted as the very faint traces of an almost square (c.6x6m) ruin, possibly an *enclosure* or a

hay-yard (fig.85). The walls consist of more or less clear rows of larger and smaller stones (especially the southern and eastern walls are clear, c.60cm's wide and 10-15cm's high). Judging from the limited amount of collapse around the ruin (unless it has been removed during the building of the modern sheep farm I), it cannot have been build in dry stone masonry, but traces of turf are slight as well. The structures has been build on an almost naked cliff surface, which lies very exposed to the fjord wind coming in from the SW.

R14: Feature interpreted as dike in 2005. This is, however, not Norse, but a low bank formed by the clearing and leveling of a grass field (C) immediately to the west of the dike.

R20: Very collapsed and indistinct turf and stone build ruin, c.16x6m, which appears as an uneven, grassy mound with some protruding stones. In the western end of the ruin is a concentration of stones, some of which forming a reasonable clear wall with a marked corner. *Outhouse*, possibly *byre/stable building*, with hay-barn (in the western end). Just NW of the ruin a heap of smaller stones can be seen, maybe collapse.

R21: Indistinct rectangular building, c.7x4m, lying on a exposed cliff much like R20 (fig.86). The course of the walls is clearly visible inside the ruin, whereas the outside lines are harder to discern. The eastern gable is likewise reasonable clear. As with R20, there does not seem be enough collapsed stones lying around R21 that it can have been build entirely in dry stone masonry, but neither is much turf preserved (which might have to do with the exposed location of the ruin). What is preserved, then, seem to be the disturbed stone foundation of some kind of *outhouse*, possibly a building for drying material (based on the exposed locality of the ruin to the fjord wind). The ruin is vegetated with grass and willow shrub.



Fig.86 Ruin 21 seen towards the N. Photo: C.K.Madsen 2009.

R22: Placed almost on the edge of a small ridge just east of the main cluster of ruins, R22 lies very exposed to the fjord wind. It is a rectangular building, c.5x2,80m, with fairly distinct stone and turf build wall about 40cm's thick and standing up 30cm high (fig.87). The northern long wall and eastern gable are formed by natural and vertical cliff faces, although wall has been added on top of these as well. A possible entrance might be seen in the southern wall. *Economy building*, possibly, *skemma* (though not build in dry masonry technique).

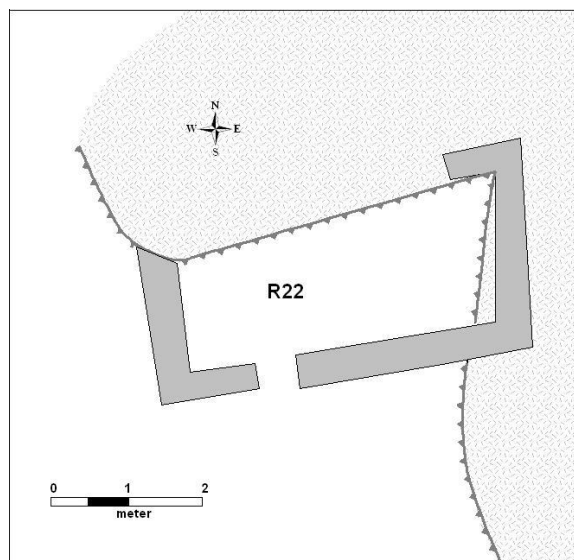


Fig.87 R22.

A: These are all heaps of stone from the clearing of the grass fields around the modern sheep farm.

B: Feature in 2005 interpreted as Inuit grave, but is, according to the present owners, also a heap of stones from the clearing of the grass fields.

C: Cleared and leveled grass field (modern).

D: According to the present owners of the summerhouse this was the first garden established by the sheep farmer.

E: Modern garden.

F: Low dike. This low dike consists of a single row (with openings in regular intervals) of smallish stones running c.50m from the modern garden D and all the way to the erosion bank by the coast. It is most clear along the eastern 2/3, while very indistinct in the western 1/3. A section was cleaned in the erosion wall by the coast, but no traces of a dike could be established, perhaps because the dike here ends in a large stone. Even though the dike runs through the modern garden and does not follow the line of the modern fences, it is most probably recent, due to its likeness with dike G (see below) and because the stones are only protruding slightly into the soil. It might mark an early fence line build by the sheep farmer?

G: Low dike (fig.88). This resembles dike F. Because the dike angles and meets the line of house I, it is most probably a recent feature, maybe an early fence line?

H: Sheep farmers house (summerhouse).

I: Sheep farmers house and stable, now removed (fig.88).

J: Fixed point established during the 2007 excavation (Møller *et al.* 2007). These are small chiseled hollows marked with red paint.

K: Fixed point, probably established by?. Small chiseled hollow marked with blue paint.

L: The midden trench excavated in 2007 and 2009. As no *in situ* remains of the dwelling (R10) was actually found in trench (Smiarowski 2007), the actual outline of this ruin is obviously somewhat exaggerated in the 2005 survey. Unfortunately, this ruin was not resurveyed.



Fig.88 Dike (G) with remains of house (I) in the background seen towards the N. Photo: C.K.Madsen 2009.

GPS: N 60°38'30.03" / W 45°38'18.48. Earlier work: Albrethsen 1971, Vebæk 1948.

Sailing into the Torsukattak fjord (fig.89), one first has to pass through the skerries named Sannerut, with many small islands and islets that are a refuge and nesting place for sea birds. East of Sannerut, the fjord of Torsukattak opens with fairly fertile and gently sloping mountains on its southern side



Fig.89 View sailing east into the Torsukattak Fjord. *Photo: P.B. Heide 2009.*

and steeper and barer ones on its northern. About 5km east of Sannerut, an isthmus juts out from the northern shore and creates a narrow and shallow passage with reefs that hide just under the surface during high tide and are exposed during high. This reef is marked on the map, but another, unmarked reef that hides 500-600m ENE of the narrowest point of the passage and sailing further in should be done in the northern side of the fjord. Just at the narrow passage, on the southern shore, is a small more recently abandoned structure, probably related to fishing.



Fig.90 View from the southern shore of the narrow gap of the protected "basin" of Torsukattak, looking towards the NE. The valley with farm is central left on the far side of the fjord (where the river comes down) and the broad valley leading to the hinterland is to the right. *Photo: C.K. Madsen 2009.*

Having passed the narrow gap, the fjord widens again and thus forms a protected basin, where the Norse farm E178 lie on the northern shore (fig.90-91). Here, one finds a southern faced, semicircular and much protected valley circling a lake. The majority of the farms buildings lie on a narrow peninsula between this lake and the fjord basin, east of the river flowing from the lake and dividing the peninsula in two (fig.91). The land around the lake is fertile, especially to the east of it, where two rivers coming off the mountain create a small, marshy delta, which must have provided, at least, reasonable grazing/grass harvesting. However, the main grassing area of the farm must have been to the SE of the farm, where the broad, the fertile valley between the mountains of Quassugaarsuk and Akullip Qaqqaa descends to the coast by a gentle slope (fig.89). This valley is also the obvious land passage into the hinterland and to the farm E93.



Fig.91 View of the lake and peninsula with the farms looking towards the E. All but two of the farms structures are located north of the river running from the lake to the fjord.

Photo: P.B. Heide 2009.

During the 2009 survey, 16 ruins were identified, documented and described at E178 during an approx. 5½ hours stay at the site. The 16 ruins, the sizable dwelling and the access to fertile grassland (though the area nearest to the farm and around the lake is otherwise somewhat gravelly and dry) give the unmistakable impression of a medium to large sized farm. E178 is the only actual Norse farm in the Torsukattak fjord and thus, it also must have had control over a quite an extensive area. E179 (see below) and perhaps also E326 (see below), are both probable shielings belonging to E178. The interpretation of E178 as a large farm could be substantiated by the localization of more ruins, which are undoubtedly to be found around the lake, on the isthmus at the gap or by the broad valley to the SE of the farm, as none of these areas were surveyed and are covered with dense shrub vegetation. Also noteworthy is an Inuit presence at the site in shape of smaller features (not surveyed) and a disturbance of the dwelling (R05).



Fig.92 Situation plan of the all the ruins of 178 on GoogleEarth satellite imagery. The ruins have here been corrected for a slight misplacement in the original survey. The large “black spot” is a natural cliff.

Ruin numbering after Albrethsen 1971 and Vebæk 1971 (note, however, that there was a considerable discrepancy between the earlier site sketches/descriptions and the ones made in 2009 and some ruins might have been confused with others). Some descriptions after Albrethsen 1971.



Fig.93 Ruin 01 seen towards the NE. Note dike (R11) extending from the corner of the enclosure and the cliff (left), forming part of the homefield dike. *Photo: C.K. Madsen 2009.*

R01: Description after Albrethsen 1971: “*Enclosure built of big rounded stones and boulders that everywhere stands where well preserved in up to a height of 1,5m of 5 irregular courses. The eastern side of the enclosure is constituted by a vertical cliff face, in the southwestern corner one sees a smaller partition with entrance in the SW corner*” (fig.93-94). The wall, which in some place is only upright boulders, is widest at the small partition, where it measures 110-120cm in width. The partition itself has “inside” walls 50-60cm’s wide and preserved only to a



Fig.94 Detail of the smaller partion inside ruin 01.

height of c.60cm. Between the wall of the enclosure and ruin 01a (see below) is an area covered with heaps of collapsed stones, covering any structural details in this area. The entrance to the enclosure is on the western wall of the enclosure, inside which the sloping soil surface is fairly dry and vegetated by crowberry, willow and very small patches of grass. The enclosure measures c.47x32 (it is somewhat irregular in shape) and encloses an area of c.1088m².

R01a: Inside ruin 01, one finds a separate, rectangular ruin, description after Albrethsen 1971: 5,9x3,25m “*dry stone masonry building of large rounded stones, the gables are relatively well preserved to a height of c.1m in 5 irregular courses, while the long walls are quite collapsed, an entrance has probably been on the southern wall*”. Considering the location of this ruin inside the enclosure, it must be some kind of *stable building*.

R02: Description after Albrethsen 1971: 7,45x3,8m “*dry stone masonry building of large rounded stones*”. The ruin lies just on the edge of a low ridge and part of the southern gable has collapsed and now lies at the foot of the ridge. The ruin is otherwise relatively well preserved (especially the northern gable) with walls c.1m wide. Just south of the building is a square feature/stone carpet of smaller rounded stones and measuring c.1x1m and of considerable age (judging from the lichens). Unknown *economy building* with low birch shrub growing inside.



Fig.95 Ruin 03 seen towards the S.

R03: Description after Albrethsen 1971: c.8,65x3,9m “*dry stone masonry building in large, rounded boulders, the ruin is quite well preserved, namely the northwestern gable, which is preserved to a height of c.1½m and 4 courses, the thickness of the walls has been approx. 1,2m; the southern long wall of the ruin has collapsed, an entrance has probably been in the northeastern corner. Just south of the building is an angled stone built wall, built in rather small stones, but it is impossible to establish whether*

*it is an extension to ruin 03 or part of another ruin. The area is overgrown with dense willow shrub and thus quite confusing” (fig.95). It might be added that the largest boulder of R03 measures as much as 240x70x55cm. The building is probably a *skemman* or *small stable*.*

R04: Description after Albrethsen 1971: c.7,75x4,10m “ *dry stone masonry building in large, rounded stones, the ruin is fairly collapsed and only the lower course is still in place; south of the ruin there is a possible pen or extension; the ruin is overgrown with willow shrub*”. Considering the pen or hay-yard, this building is probably some kind of *sheep/goats shed* or *small stable*.



Fig.96 Ruin 05 seen towards the NE. Note the upright placed stone beams.

R05: Description after Albrethsen 1971: c.48x19m “ *very collapsed and indistinct dwelling with faint traces of a large number of small rooms; an unusual amount of small stones is seen in the surface, especially in the southwestern part one finds many (some) large, regular stone beams, here among one with a length of 3m (see below). In the eastern part of the ruin*

there seems to be a smaller stone built house, which can be a separate structure, which now, because of the collapse of the dwelling, appears as merged with the latter. In the southwestern part of the ruin 4 (5) stone beams have been erected more recently; the ruin is overgrown with grass and willow” (fig.96-97). Regarding the traces of rooms/wall lines on the surface, it might be added that a depression (hallway?) seems to run all the way across the ruin, otherwise the rooms are hard to delimit. The mentioned stone beams are surely all from the Norse building, although the 5 erected ones might be an umiaq support (though the fifth is then somewhat out of place)? The largest of the stone beams measure 300x50x25. A smaller midden area can be seen just north of the ruin.



Fig.97 Closeup of the upright placed stone beams and the large one lying down described in the text.

R06: Totally collapsed stone built structure, in the SW corner of which one does glimpse the outline of a rectangular building with walls c.50cm wide and now preserved only to a height of c.10cm. Especially the western long wall is fairly distinct and the wall of the

structure here seems to extend to some natural boulders. Also, the structure may have been connected to the dwelling (R05) by a dike, thus creating a hay-yard/enclosure between the two buildings. R06 is some kind of outhouse now vegetated by grass.

R07: Roughly square, c.3,4x3,4, completely collapsed structure which shows as low stone/turf walls, c.20-30cm wide and 10cm high, with rounded corners. In the southwestern corner is a small pile of stones. Unknown structure vegetated by willow and crowberry. It is possible that S.E. Albrethsen's R16 is Vebæk's R07, as they appear in approx. the same location (but with different dimensions and shape).

R08: Small, rectangular, and very collapsed turf/stone structure, c.7,2x3,7m, lying close to the fjord on the SW side of the river from the lake. The walls are low, only c.10cm high. Especially in the eastern end the ruin seems uncertain and it might even be a natural formation? *Outhouse* or, alternatively, some kind of *Thule-culture structure*. The ruin vegetated by grass and willow.



Fig. 98 Ruin 09 seen towards the ESE.

R09: This, c.7,9x3,2m, turf/stone ruin is very similar to R08, both in appearance and location, albeit R09 is even more collapsed, only showing as lines of rounded stones (fig.98). It seems to be portioned in the middle. *Outhouse* or *Thule-culture structure* now vegetated by grass and willow and almost being eroded into the fjord.

R10: Possible *dike* cutting across the peninsula at its narrowest SW of the river from the lake, thus creating a water-bounded area/enclosure or a homefield area. However, the traces of a dike are extremely

faint and, if it is actually a dike, it consists of a line of interspaced boulders with no traces of turf.

R11: Description after Albrethsen 1971: “*Homefield dike which can be traced of a distance of... (c.200m including the cliff) ...towards the east the dike is made from large stone blocks and is here very distinct, towards the west the dike is mostly of smaller stones and quite indistinct. Natural boulders have in quite a long extend been exploited*”. To this one might add the observation that the cliff that forms part of the dike slopes gently to the north, while it has a vertical face c.1,5-2m high to the south. This means that the dike, at least here and at least in the cases of sheep/goats, is meant to keep the animals from moving out of the supposed homefield area (in perhaps into the marshy grassland area?).

R12: Very badly preserved almost square for a building, c.3,5x2,8m, that today looks nothing more than an outline of angular stones. Some of the stones are almost at surface level.

R13: Description after Albrethsen 1971: c.8,3x7,7m “*building in dry stone masonry that is almost completely collapsed, but traces of an outline can be glimpsed*”. The ruin, some outhouse, is overgrown with crowberry and grass.

R14: Possible, very poorly preserved Norse ruin, some *outhouse*, fallen into complete collapse and today appearing only as a vague, c.10cm high, rectangular elevation measuring c.6,1x3m. On the S, E and W walls (c.20-30cm wide) traces of stone/turf can just be glimpsed, while the northern wall is completely gone.

R15: Possible completely collapsed structure, maybe an *enclosure* or small *outhouse with added enclosure/hay-yard*, build among large, naturally positioned boulders (fig.99). Shows only as a depression filled with stones (in the western end) and as a low wall (in the eastern end). The stones are rounded. The ruin is overgrown with grass and crowberry.

R16: Very uncertain and indistinct ruin, which appears as an approx rectangular, c.4,6x,2,75m, feature with walls of larger rounded stones, c.40cm wide and rising up to 20cm above the surface, here among several natural boulders. The ruin is vegetated by crowberry. This is possibly not the ruin mentioned by Albrethsen.

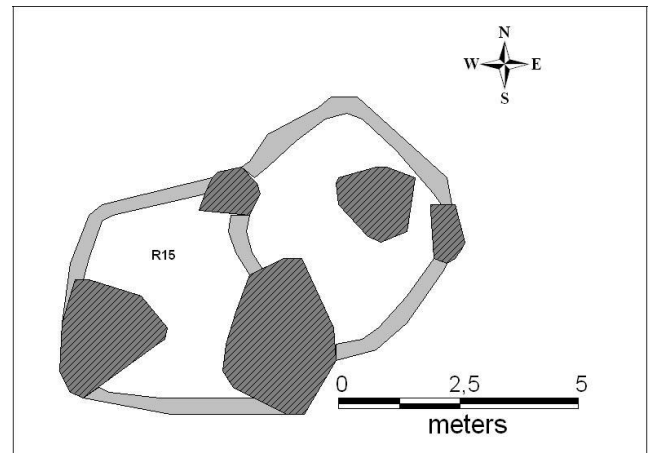


Fig.99 Plan of R15

E179 – Torsukattak

60V2-0IV-568

GPS: N 60°37'24.69" / W 45°41'43.27". Earlier work: O. Bak 1968.

Just around 2,2km into the Torsukattak Fjord, one finds on its northern shore the small Norse site E179. The slopes of the northern side of the fjord are generally fairly steep, but the ruin group is



Fig.100 Sea side view, looking towards the N, of the foreland with ruin group E179. Photo: C.K. Madsen 2009.

located just where there is a small and less steep foreland (fig.100). The area seems fairly dry and the vegetation is completely dominated by willow and birch shrub, so grazing (in the normal sense) is not the main purpose of this farm. Although it was not walked, there seems to be fairly easy land passage over the mountains NW to the farm E330.

With only 3 ruins (fig.101), hereof 1 discovered in 2009, and a moderate sized dwelling, ruin group E179 must be characterized as the smallest of sites, most probably a shieling under the farms E178 or E330. E179 has fairly easy access over land to both of these farms. The exact purpose of this site is very hard to interpreted, but it might have to do with access to sealing, bird catching (on the islands of the Sannerut skerries), fishing or all of them. The lack of outhouses seems to out rule any function of the place as a farm proper. Although only approx. 1½ hour was spent surveying the site, it is quite certain that most ruins have been discovered.



Fig.101 Situation plan of the ruins of E179.

Numbering after O. Bak 1968.

R01: Rectangular, c.26x13,5m, completely collapsed ruin. Although not a farm mound proper, this is undoubtedly a small, turf/stone built *dwelling*, today showing as an uneven area with a large amount of small stones and a few depressions which are likely rooms (fig.102). Approx. middle in the ruin is an area with few stones and R01 might actually have been to separate buildings, now merged in one inseparable heap of collapse.



Fig.102 Ruin 01 seen towards the SW.

The state of collapse also makes it hard to delimit the ruin with any precision. It is interesting that

the western gable is preserved as an actual turf wall of some thickness and one might wonder whether this side of building, being constantly exposed to the fjord wind from the west, was made thicker (which also accounts for better preservation) to better protect/insulate the building? Also, the still rather limited amounts of collapse could suggest an early age of the building or a less heavy construction? The ruin is vegetated by grass and crowberry.

R02: Small, uncertain ruin built against a large boulder. It shows mainly low, crass covered elevation in the terrain with a few protruding larger stones. Especially in the southern part, in extension of the boulder, can one glimpse a wall line. Some sort of *outhouse*.



Fig.103 Ruin 03 (foreground) and the foreland with R01 (background) seen towards the S.

R03: Some 70m up the slope from R01 and R02 lies a small, rectangular building that measures some 4,15x2,5m (fig.103). A stone/turf built wall c.30-40cm wide rises some 30cm (2 courses at the most) above the surface, though it is covered in birch, willow and crowberry vegetation.

GPS: N 60°38'6.15" / W 45°51'41.06". Ealier work: Gulløv 2000, Bak 1968.

On the southern side of the island of Kangeq is a small inlet, which is surrounded by a fairly flat and fertile terrain (fig.104). One finds the farm of E181 at the innermost part of this inlet, where a river comes down from a pass between the mountains of western and eastern Kangeq. Here, is a small, oblong gravel plateau sheltered from the north, east and west and covered with considerable grass vegetation. The stony beach provides the place with reasonable landing for boats, although it is also a place that packs with summer drift ice.



Fig.104 View of the inlet and small valley with E181 seen towards the SE. The majority of the ruins are found on the green patch west of the river (where a person I standing). *Photo: P.B. Heide 2009.*

That Itilleq is indeed a favorable place for habitation is attested by the many Inuit structures at the site; several of these are Thule-culture winter houses, perhaps even of an early date (see Gulløv 2000;21), but one also finds tent rings of some age, indicating summer habitation. A small trench was excavated just outside ruin 07 in 2000 (Ibid;19pp), though this trench was not surveyed in 2009. The Norse farm at the site must, with its medium sized dwelling, but relatively few outhouses (7), be considered a small to medium farm. However, some outhouses could have been removed/altered/reused by later Inuit occupation, as also suggested by O. Bak., although no indications of this was observed in 2009 (except maybe in case of ruin R14). Furthermore, only ca. 3 hours were spent surveying the site and a number of ruins probably hide in the surrounding parts of the valley. Finally O. Baks ruin 01a could not be found, in spite of almost 2 hours of intense search on the other side of the inlet.

Ruin numbering is after O. Bak 1968 (and Gulløv 2000), though note that this numbering does not differentiate between Norse and Inuit structures.



Fig.105 Situation plan of ruins of 181 on GoogleEarth satellite imagery.

R01: Possible Norse ruin which appears as a slightly elevated area, roughly rectangular, c.10,6x4,6m, with depressions and a few larger protruding stones. This ruin, *an outhouse* of some sort, lies with excellent view out of the inlet. It is completely overgrown with grass and moss. On the north side of the ruins is 3 upright, but sloping stone slaps, all pointy towards the upper end (fig.106). These are not part of the Norse ruin and could be an Umiaq support or a sea-marker? The lichens on the stone slaps suggest a considerable age.



Fig.106 Ruin 01 seen towards the ENE. Note the pointy stone slaps.

R02: Very collapsed, rectangular Norse stone/turf building measuring c.7,8x4m. The limited amount of stone collapse suggests that it is a foundation for a turf building, an unidentified *outhouse*. The stones are rather large, up to 80-90cm in length and 50cm in width. In the northern end of the ruin one sees a newer disturbance.



Fig.107 Ruin 03 seen towards the NE.

R03: Reasonably well-preserved, Norse stone/turf building with walls made of boulders and turf completely vegetated with grass, crowberry and willow (fig.107). The structure, some sort of *outhouse*, is rectangular, c.8,9x3,8m, and especially the northern end is quite distinct, but a later Thule-culture grave (TG01) reusing the stones of the building, makes it somewhat hard to estimate the size and height of the walls.

R04: 3 quite well preserved and merged Thule-culture winter houses with cooking niches/meat caches (fig.109). It suggested by O. Bak that this ruin was built in an earlier Norse ruin, though no sign of this was observed in 2009.

R05: Approx. rectangular (with rounded corners), c.3,8x2,3m, pile of stones (fig.109). Possibly the remains of a small Norse *outhouse* or disturbed Thule-culture grave.

R06: 2 quite well preserved and merged Thule-culture winter houses with a cooking niche/meat cache (fig.109). It suggested by O. Bak that this ruin was built in an earlier Norse ruin, though no sign of this was observed in 2009.



Fig.108 Ruin 05 seen towards the NE.

R07: Round Thule-culture winter house (fig.109). A small trench was excavated just outside the passage to house in 2000, although this was not noted in 2009.

R08: Rather large, c.31,3x26,2m, low farmmound lying on a slightly elevated, drained knoll near the river (fig.109). Visible on the grass- and moss covered surface are many protruding stones, outlines of probable rooms and walls, but these can rarely be wholly delimited with any precision. In the southeastern part of the ruin one sees a number of partly upright stone slaps that might be stalling stones somewhat out of place. Suggested by differences in vegetation and collapse, R08 might actually be a number of stone/turf buildings, the separation between which has simply been obliterated by the thorough degree of collapse. There are no clear traces of a midden to this ruin, undoubtedly a Norse *dwelling*, but 2 newer foxtraps have been built inside the ruin of the collapse stones.



Fig.109 View, looking towards the SW, of the ruins just W the river. The person is standing by R08, left of it, by the green patches, R04, R06 & R07.

R09: Very indistinct and collapsed Norse turf/stone ruin of almost rounded shape and a diameter of c.8,75m. It shows as a low depression surrounded by a turf bank c.1,5-2m wide. In the center of the ruin, some *outhouse*, is a clear partition wall preserved in on course of stone. The ruin is vegetated with grass, ranunculus and dandelion.

R10: Fairly well-preserved rectangular, c.8,7x5,5m, Norse *economy building* with boulder/turf walls c.60-80cm wide and preserved to a height of c.40cm (the inside outline of the walls is much clearer than the outside) (fig.110). The western gable of the ruin is preserved in 4 courses (c.60cm) and suggests a building, probably a *small stable* or *sheep/goats shed*, with an inner wall of stone and an outer of turf. In the eastern end of the ruin the collapse stones have been reused in a Thule-culture grave (TG03).



Fig.110 Ruin 10 seen towards the N.



Fig.111 R11 seen towards the SSW.

R11: Very collapsed Norse *economy building* (or foundation for such), rectangular (c.7,8x3,7m) and partly exploiting large boulders, while the majority of the structure must have been in a more perishable material (fig.111). Approx. middle in the ruins is a clear partition wall, unless it is actually a gable and the eastern part of the ruin is simply collapse.

R12: Rectangular stone structure, c.2,5x1,4m, with two internal compartments and made mostly from upright, rounded stone slabs so that it reaches a height of c.40-50cm (fig.112). The preservation of the feature and the way of construction suggest that it is of Thule-culture origin (?), however the lichens on the stones suggest a considerable age. Lightly vegetated by grass and willow.



Fig.112 R12 seen towards the WSW.

R13: Could not be located.

R14: Roughly rectangular of shape, c.10,80x5,3, but with a back wall constituted by a low cliff, R14 appears as a depression in the terrain surrounded by a low stone/turf wall/bank. The stones are rather larger, up to c.60x60x40. Judging from the appearance and amounts of turf in the structure, as well as the trace of a narrow passage on its eastern side, this looks like a Thule-culture a winter house with a meat cache/cooking niche on its northern side, but could perhaps be reusing a Norse pen (judging from the stones and the unusual location of the structure)?.

R15: Rounded and somewhat indistinct Thule-culture winter house, which appears as a turf/stone wall surrounding a central depression in the terrain. The back wall of the structure is constituted of a natural cliff. The ruin is overgrown with crowberry, grass, fjeldsyre and willow.

R16: Stone pile of square shape between two natural boulders. It is probably a meat cache belonging to R15.

R17: Some 700m directly east of the described buildings, one finds 3 Thule-culture structures (R17-19), the first of which is a horseshoe shaped stone feature, probably a meat cache or a partly demolished fox trap.

R18: Very well-preserved Thule-culture tentring. The vegetation suggest some age.

R19: Partially preserved trapezoid Thule-culture summer hut.

R20: Very well-preserved Thule-culture tentring. The vegetation suggest some age.

TG01: Thule-culture chamber grave built of flat stone slabs, c.2,5x3m. Inside badly preserved bones are visible.

TG02: Thule-culture chamber grave reusing stones of Norse ruin (03).

TG03: Thule-culture chamber grave (no preserved bones) reusing stones of Norse ruin (10).

GPS: N 60°41'6.07" / W 45°58'15.63".

Ruin group E188 on the island of Akia at the mouth of the Igaliku Fjord was not part of the ruin groups planned to be surveyed during the 2009 field season, but when presented with the chance, a brief visit to the site was welcomed, among other things to better plan future surveys. The ruin group, which has several well-preserved ruins, lies by a little inlet on the south side of the peninsula that runs east from the main part of Akia (fig.113). Behind the inlet is a south faced semicircular valley around a lake, completely sheltered from the N, E and W.



Fig.113 View of the ruins of E188 lying closest to the fjord. The withered patch of grass is

Two things were noted during the brief stay at the site, namely that 2 trenches had been cut, not too long ago judging from their appearance, centrally in the dwelling (a 5x5m trench) and in the nearby midden (2x1m trench). There is, however, no record in the archives of the National Museum of any excavation at the site.

Secondly, one of the ruins in the valley was an enclosure build up against the side of a giant boulder (fig.114). The stone wall was generally low, c.30-50cm, but just where it met the boulder in one side, the wall stood about 1,4m high. Judging from the amount of collapse stone, the stone wall cannot have stood higher than 1m at most. Thus this is very clear evidence that the stone wall was a foundation for a superstructure of turf, which might have been a means of construction in many other cases.



Fig. 114 Detail of wall in enclosure at E188

GPS: N 60°34'28.30" / W 45°48'13.33". Earlier work: Albrethsen 1971, Gulløv 2000.

The isthmus of Qaersutsiak lies on the eastern side of the broad head of the peninsula that also forms the northern side of the Torsukattak Fjord. The isthmus itself is composed of a large number of cliff knolls and low ridges between which one finds small valleys and areas with grassy marshland/heather and the otherwise normal coastal vegetation dominated by low growing willow, birch and crowberry. The Norse farm E190 is found where the isthmus is especially level, though still traversed by many low cliff ridges and patches of low growing marshland/heather. East of the farm off the coast is an island, where one can see Inuit structures (though it was not visited) and north hereof, some skerries. There is a quite favorable landing site at a beach here by the narrow channel between the island and the mainland, but there is also an inlet just south of the farm that provides easy landing for boats.



Fig.115 View of the flat part of the isthmus with E190 looking towards the ENE. The large island and the channel is to the right, the skerries north of the site to the far left. *Photo: P.B. Heide 2009.*

Qaersutsiak was at a time, probably in 1940-1960'ies, a modern sheep farm, although this venture has long been abandoned, the modern homefield and fences fallen into disuse and several of the stable buildings into ruin. There is, however, still a few of the houses standing (see fig.115-116), which are now being used as summerhouses by locals. There is also a strong Thule-culture presence at the site, winter houses, graves etc., of which only a few were surveyed. All these later activities have bearing, not only preservation wise, but also the interpretation of the earlier Norse farm; It is evident that some of the modern buildings have slightly disturbed the Norse structures, although the modern, leveled homefield with small drainage trenches is probably the most intrusive alteration;

this runs close by the presumed dwelling (R01), but other than perhaps a few stones from clearing the field (also in R02) and a broken fence, has respected the ruin. More interestingly, there is clear evidence (abandoned nets, boats, and fishing implements) that the modern sheep farm, like so many others of that time and with like location, subsisted only partially on farming and more on fishing/hunting. The Thule-culture ruins are also evidence of the hunting/fishing potential of the site. This makes perfect sense, seeing that the only impressive patch nearby of grassland is the modern homefield and the surrounding landscape with even the shrub vegetation rarely rising above knee level. The Norse farm of E190 with its 10 ruins, 4 of which were discovered in 2009, and a rather unimpressive dwelling, does indeed seem like a farm in the smaller end of the scale. The several turf built outhouses and enclosures does point towards the presence of some animal husbandry, but the size of the outhouses may also be exaggerated due to the very exposed location of the farm. On the other hand, E190 is the south westernmost farm of the entire peninsula and may have had sole access to a poor, but very large grazing area? In any case, this farm is one of the Norse places with best access to the rich animal life of the outer coast.



Fig.116 Situation plan of the larger structures found at Qaersutsiak on GoogleEarth satellite imagery. Ruin numbering is as usual, but; H = modern or ruined house, F = modern homefield, GA = modern garden, GR = modern fenced gravevard.

Approx. 5 hours were spend surveying the site and the surrounding landscape, but considering the many phases of occupation and a rather extensive landscape, several ruins may be unnoticed, especially in the area NW of the farm. 2 fragments of a soap stone vessel and a possible sandstone lamp was found at the site. The site was also visited in 2000 by another team (Gulløv 2000).

Ruin numbering after Albrethsen 1971.

R01: Description after Albrethsen 1971: c.26,7x16,2m “... very collapsed complex with traces of a rather lot of small rooms, probably dwelling etc., many stones are visible on the surface; overgrown with grass. Recently a fence has been built across the ruin, furthermore there is one pile of stones from field clearing and some garbage, other than this the ruin has not been disturbed by newer activities” (fig.117). To this it might be added that the fence today is collapsed. In the eastern end there is a very distinct and roughly rectangular with rounded corners, c.8,8x6,10, feature of stone, which might be the stone pile mentioned by Albrethsen. This might actually be a room in the Norse structure, which is perhaps confirmed by the Thule-culture grave (TG01) inside the rectangle, which seems to have reused the stones of the rectangle/room. On the northern side of the ruin is an almost chapel-like extension with a clearly visible wall that continues some way into the ruin.



Fig.117 Ruin 01 seen towards the ESE (with the modern home field in the background).

R02: Description after Albrethsen 1971: c.18,25x11,1m “...very indistinct stone/turf building with traces of 2-3 rooms, stable complex?, many stones are visible on the surface; overgrown with grass and moss. There is a pile of stones from field clearing on the southern edge of the ruin, other than this the ruin has not been disturbed by recent activities”.

R03: Description after Albrethsen 1971: c.25,20x10,40m “... completely collapsed and indistinct stone/turf building with traces of several rather small rooms, stable complex? Many stones are visible on the surface, the ruin is found in a very stony area between rounded cliffs; overgrown with moss”. In the southeastern corner of the ruin is an area with a larger concentration of stones that might represent an addition, which is, however, impossible to establish due to the state of collapse.

R04: Description after Albrethsen 1971: c.16,8x10m “... well preserved enclosure of large angular stone blocks, the eastern long wall is somewhat collapsed, the western comprised of a cliff face” (fig.118). The walls of the enclosure is c.40-70cm wide, but only preserved in 1 course (c.80-100cm). In the NW corner of the enclosure there is a newer stone built “channel”, perhaps for catching hares? On the cliff over the enclosure and partially exploiting (and probably having removed part of) the wall of it is a large, well built Thule-culture grave (TG02). Right next to it is another, smaller, but equally well-built Thule grave (TG03). In the SW corner of the enclosure outside the wall is a square, stone built feature, perhaps a disturbed Thule-grave or perhaps, judging

from the stones, a smaller Norse enclosure reused as a grave. Inside the enclosure grows grass and moss.



Fig.118 Ruin 04 seen towards the SSE. TG02 is clearly visible on top of the cliff.

R06: A roughly rectangular, c.8,5x4m, stone/turf built ruin constructed along and partly incorporating a low cliff face. The ruin is fairly indistinct, showing only as c.10cm high walls and rounded stones (it may have been divided in the middle). S of this probable *stable* or *sheep/goats shed*, seem to be added walls, perhaps enclosures or hay-yards? The ruin is covered by grass.

R07: Rectangular area, c.3,5x2,9m, with many rounded stones, which might represent the foundation for a Norse *outhouse* (fig.120). The feature would have been considered natural, if not for its location on top of a low cliff knoll or for a line of stones perhaps representing a wall? Some stones of this possible structure have probably been removed in the construction of a modern foundation for a flagpole on 3m from the ruin. The ruin is vegetated by grass and willow.

R08: Roughly oval, longest diameter c.16,3m, but completely collapsed turf/stone ruin, which appears as a low grass covered elevation with many protruding smaller and angular stones. No rooms proper in this *outhouse* can be distinguished, but a few wall lines are visible.

R09: Very uncertain ruin appearing as a roughly rectangular area, c.8,1x6,2, with many larger

R05: Description after Albrethsen 1971: c.8,1x5m “... rather well preserved enclosure of rather large angular stone blocks, the western long wall is a natural cliff face, in the SW corner is an Inuit grave” (fig.119). The walls are c.30-40cm wide, but part of it has been removed in the construction of the Thule-culture grave (TG04). In the NE corner of the enclosure is a smaller room, c.100x120cm. The walls are here only preserved in 1 course (up to 50cm).



Fig.119 Ruin 05 seen towards the S. TH04 is visible in the far central part of the ruin.



Fig.120 Ruin 07 seen towards the SE.

angular stones. Two probable wall lines can be seen. The ruin is vegetated by grass and heather.

R10: Very collapsed, but still quite distinct *enclosure* build against a cliff face and among natural boulders some 150m west of the main cluster of buildings (fig.121). The enclosure is roughly rectangular of shape, c.8,3x4,8m, with a smaller room added to the SE corner. The walls are c.60-80cm wide and preserved to a height of c.40cm (in a few places preserved to a height of 2 courses). Inside the enclosure grows heather and crowberry.



Fig.121 Ruin 10 seen towards the ENE.

TH01: Well preserved Thule-culture winter house with an outside cooking niche.

TH02: Very well-preserved Thule-culture winter house with an inside cooking niche and a nearby meat cache.

TG01: Thule-culture stone built grave inside R01.

TG02: Large and well built Thule-culture stone grave partially reusing R04.

TG03: Well built Thule-culture stone grave next to TG02.

TG04: Thule-culture stone built grave inside and reusing the stones of R05.

E237 – Eqaluqaarsuit

60V2-0IV-556

GPS: N 60°31'37.71 / W 45°31'2.80". Earlier work: Berglund 1980.

By opportunity we visited the modern sheep farm at Eqaluqaarsuit in the Alluitsup Kangerlua, to briefly inspect the ruin group of E237, which was not originally part of the planned survey work. However, the sheep farmer knew nothing of any Norse ruins and a quick look around his fields did not produce any. Eqaluqaarsuit does seem an obvious place for a Norse farm, with a sheltered, natural harbor and reasonable fertile green pastures. Viewing the extensive field work at the farm, it is not improbable that ruins can have been removed prior to the knowledge of the present sheep farmer.

GPS: N 60°40'33.38" / W 46° 0'20.33".

Some 2,2km WSW of ruin group E188, the ruin group E274 on the south side of the island of Akia is marked on the map. Presented by the opportunity, we briefly visited the site to inspect the ruins. Spending approx. 45min looking around at the site, we did not manage to find any ruins other than Inuit. Of these, however, two are extremely interesting (fig.122); these were found on a gravelly surface between two ridges and near the beach that showed clear signs of wind erosion. Both (though one was more clear than the other) were oval shaped structures (summer huts) with walls of a single line of stones and a line or two of stones central in the internal structure. These might actually be mid-passage tent rings, and judging from the vegetation and appearance of the ruins, of considerable age, possibly Paleo-Eskimo (Dorset) structures?.



Fig.122 View of the Inuit structures at E274.

GPS: N 60°39'44.75" / W 46° 0'31.21".

After having visited the coordinates of E274, we went on to briefly visit the site of E275 for the same reasons. However, except for 3 ruins of somewhat unusual appearance, but probably Inuit, and 1 well built, possibly Norse, cairn, nothing distinctly of Norse character could be located.

GPS: N 60°38' 6.70" / W 45°22'46.46". Earlier work: O. Bak 1967.

On the southern side of the low isthmus of Nuluk in the Alluitsup Kangerlua Fjord (fig.123), there is a narrow, relatively flat and fertile plateau just by the beach, which houses a large number of Thule-culture features (among them several winter houses). A bit up the plateau, completely hidden in head high birch and willow vegetation is a single distinctly Norse ruin (O. Bak's ruin 7). Although O. Bak by his survey speculated that some of Inuit structures could be reuse of Norse structures, we found no visible indication of this in 2009.



Fig.123 The Nuluk isthmus and the location of E314 (and E92) on GoogleEarth satellite imagery.

There can be little doubt that the single ruin of E314 is a shieling, probably belonging to E92. While the location might seem somewhat strange, it actually makes perfect sense when seen in bird's eye view (fig.123) and sea side view (fig.124); from the GoogleEarth satellite imagery, it is obvious that Nuluk form a reasonable fertile isthmus. That this isthmus is actually distinctly delimited to the N and W by the steep slopes of the mountain of Tinuparnek (830m) is, however, even more



Fig.124 Sea side view of the southern slopes of the mountain of Tinuparnek seen towards the ENE. The Nuluk isthmus is visible on the far right. *Photo: C.K. Madsen 2009.*

obvious, when seen from the fjord (fig.124). The isthmus of Nuluk is thus what can be called a *naturally delimited grazing area*, i.e. an area where one could graze a number of animals with minimum supervision. Also interesting is a possible dike just east of the farm E92 (not surveyed in 2009), actually cutting off any passage from Nuluk to the homefield area of this farm.

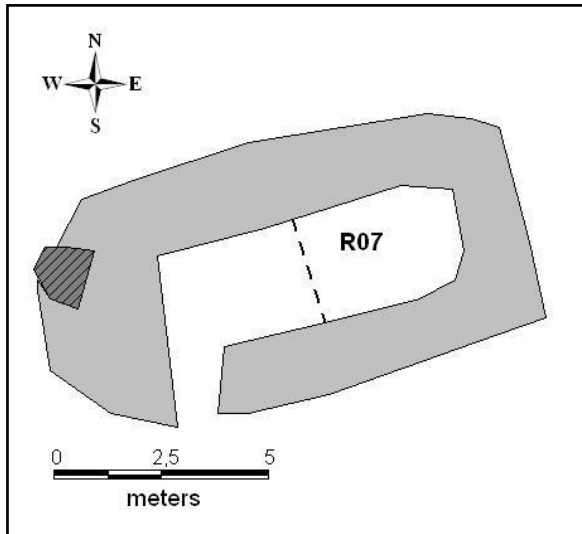


Fig.125 Plan of ruin 07.

Numbering after O. Bak 1967.

R07: Very distinct turf/stone built rectangular, c. 11,6x6,1m, ruin that is completely overgrown with head high willow/birch shrub (fig.125). Especially the southern wall and eastern gable are well preserved with walls 100-110cm wide, double-faced with an outside of large stones and a core of turf. In the southwestern corner is an entrance and a there might have been a partition in the middle.

E322 – Illunguaq

60V2-III-530

GPS: N 60°29'14.55" / W 45°34'22.25". Earlier work: O. Bak 1966.

Near the southern tip of the smaller peninsula that parts and runs directly south from the main Vatnahverfi peninsula lies the small inlet of Zacharias Havn (Zacharias Harbor)(fig.135). This is a perfect natural harbor with several good, shallow landing places and Norse and Inuit ruins are found all around the inlet. E322 is found on the northern side of the inlet, where there is a small patch of flat and fertile grassland under some low cliff knolls (fig.126), but otherwise the vegetation of the general area is of the normally poor grazing quality of the coastal region.



Fig.126 The strip of flat, fertile grassland with E322 seen towards the ENE. Photo: P.B. Heide 2009.

With 6 (possibly 8, hereof 2 found in 2009) Norse ruins, hereof one a smallish dwelling, E322 gives the distinct impression of being a small farm, perhaps even a shieling. However, the ruins of E322a (see below) should possibly be counted viewed as part of the farm, raising the number of ruins to 9. The vegetation of surrounding area does exclude the possibility of feeding any larger herds of animal husbandry and the farm can instead have been a base for hunting/fishing.



Fig.127 Situation plan of the ruins at E322 (corrected for a slight misplacement in the original survey).

Ruin numbering after O. Bak 1966.

R01: Inuit feature not registered in 2009.

R02: Feature interpreted as possible Norse by O. Bak, in 2009 interpreted as Inuit feature (fig.128).



Fig.128 Ruin 02 seen towards the SW.



Fig.129 Ruin 04 seen towards the SW.

R03: Not found in 2009.

R04: Possible Norse *outhouse*, rectangular of shape, c.7,2x2,9m, with faint walls, c.30-40cm wide, of larger angular stones, within which one sees a few scattered collapse stones (though not enough for it to have been completely in dry stone masonry)(fig.129). There is a possible trace of a partition in the SW end of the structure, which is today overgrown with grass and crowberry.

R05: Approx. rectangular, c.13,8x8,6m, but very collapsed and indistinct possible Norse ruin, which shows as a c.50cm high grass vegetated elevation with a few protruding large stones and natural boulders (fig.130). A possible room is seen in the SW end, otherwise no clear rooms or wall lines can be seen. *Stable complex?*



Fig.130 Ruin 05 seen towards the SE.

R06: Inuit meat cache.

R07: Inuit meat cache.

R08: Distinct complex of 2-3 merged Thule-culture winter houses with meat caches, cooking niches etc., as well as a rather recent disturbance (and a rectangular nicely deturfed excavation area?).

R09: Irregular, c.32,2x11,9m, very collapsed turf/stone Norse ruin, in all probability a *dwelling*. It appears as an uneven, grass covered rise in the terrain with faint traces of a few possible rooms or “Inuit mining pits”, as they seem rather new. Judging from the shape of the ruin, it is possibly two merged ruins.



Fig.131 Ruin 10 seen towards the S.

R10: Rather poorly preserved, rectangular, c.8x2,9m, Norse *outhouse* or foundation for such (fig.131). The walls consist of rows of rather large angular stones, c.30-40cm wide. Especially the eastern long wall and southern gable is quite distinct. A number of stones from the Norse building has been used in a Thule-culture grave found in the ruins northern end. In the other end, there seems to be a partition. The ruin is vegetated by grass and Alpine Lady's Mantle.

R11: Very collapsed Norse *outhouse*, rectangular of shape and measuring c.6,7x3,1m. The walls, actually only foundations for at turf superstructure, are

about 30-40cm wide and of single rows of larger angular stones. Especially the northern gable and eastern long wall are quite distinct. Vegetated by grass, crowberry and Alpine Lady's Mantle.

R12: Rounded Thule-culture winter house with inside cooking niche and outside meat cache.

R13: Thule-culture winter house with secondary reuse. An outside cooking niche or meat cache is visible.

R14: Approx. square stone chamber, c.2,4x2,1m, made of larger rounded stones. Disturbed Inuit grave or Norse ruin of unknown function?

R15: New possible foundation for a Norse *outhouse* measuring c.7x3,1m and made of larger angular stones (fig.132). A part of the northern long wall seem to be missing. The ruins is vegetated by grass and crowberry.



Fig. 132 Ruin 15 seen towards the NW.

R16: Newly discovered possible *enclosure* made by erecting walls (exploiting natural boulders) across both ends of a c.8,3m wide crevice, thus creating an enclosed area of c.57m² (fig.133). The stone/turf walls are, however, rather poorly preserved and hard to distinguish from the natural stone formations.



Fig. 133 Ruin 16 seen towards the SSE.

TG01: Thule-culture grave that at first glimpse did look very much like a very large foxtrap with chamber, but upon closer inspection revealed poorly preserved human bones, i.e. a grave.

E322a – Illunguaq

GPS: N 60°28'50.64" / W 45°34'42.44". Earlier work: O. Bak. 1966.

On the southern side of Zacharias Havn, only some 800m from E322, one finds a cluster of 3 ruins, ruin group E322a (it has here been given a independent E-number), either part of E322 or, perhaps, an independent shieling (fig.134-135). Concerning this last interpretation it is worth noting that because the southernmost part of this peninsula (i.e the area south of Zacharias Havn) is only connected to the mainland by a c.130m wide land bridge, it most probably functioned as a naturally delimited grazing area in its own right. Although the vegetation is still rather poor, there are actually patches of grassland near the ruins.



Fig.134 Situation plan of the ruins at E322a (corrected for a slight misplacement in the 2009 survey).

R01: Small and very collapsed approx. rectangular stone/turf *outhouse* or foundation for such, measuring c.4,2x2,8m. The walls, which are most distinct on their outside, are c.50cm wide and preserved to a height of 15-20cm, while the inside of the ruin is filled with stone collapse. The ruin is vegetated by crowberry and grass.

R02: Rectangular, c.4,3x3,1m, turf/stone built *outhouse* or foundation for such. The stones are small and rounded. The ruin is vegetated by grass, crowberry and moss.

R03: Approx. circular *enclosure* made of smaller rounded stones that now have completely collapsed. The walls today appear to be c.1,5m wide and up to 40cm high, but the width of the walls is rather exaggerated due to the state of collapse of the ruin, which is, however, still very distinct. The outside diameter is c.6,6m. Inside the enclosure grows crowberry.



Fig.135 GoogleEarth view of the southern end of the peninsula with Zacharias Havn. F322 and F322a.



Fig.136 Ruin 03 seen towards the ENE.

GPS: N 60°33'33.80" / W 45°36'55.71". Earlier work: O. Bak 1968

E324 has the most unlikely location for a Norse farm; about half way into the Akulleq Fjord one finds on the steep and infertile northern side a small, flat point, which is the only place in a long stretch of the shore that offers any reasonable landing for boats. On this point lies a single Norse ruin and about 70m further up the slope is a narrow terrace with the main cluster of 7 buildings (fig.137).



Fig. 137 Situation plan of the ruins of E324 on GoogleEarth satellite imagery.

These 8 ruins (1 new was found in 2009 during a c. 1½ hour stay), which are all much collapsed and seem of rather insubstantial character, make up what can only be a small shieling. The very unlikely location was already remarked upon by O. Bak and it does, indeed, raise the question whether we have overlooked many such farms/shielings? The surrounding steep slopes do, in any right, make for very poor grazing and the access to the site is hard, if even slightly dangerous. Though there is actually water supply in the form of a spring halfway between the main cluster of buildings and the fjord, it does seem a rather desolate place for a farm. E324 could have belonged to either E95 or 95a, but must surely have this location to somehow exploit the northern side of the Akulleq Fjord or, perhaps, for fishing and hunting?

Ruin numbering after O. Bak.

R01: Found on the small point below the farm is small very collapsed building which measures c.5,5x3,5m, though the southeastern wall is partially eroded by the sea (datable could possibly be retrieved from the natural section?)(fig.141). The walls (foundations?) are c.30cm wide and only just visible at level with the vegetation. The building, perhaps a *boathouse*, has been disturbed by a later Thule-culture presence (TH01) and a foxtrap has been built in the western end.

R02: Could not be located.

R03: Somewhat irregular ruin, perhaps an *enclosure*, in the edge of the boulders fallen from the mountain (fig.138). The walls are stone build and to a large extent incorporate the natural boulders and cliffs. Where best preserved, the walls are c.50-60cm wide and rise to a height of c.1m (5 courses). Inside the structure grows grass and crowberry.



Fig.138 Ruin 03 seen towards the NNE.

R04: O. Bak interpreted R04 and R06 as separate buildings, but they are here interpreted as the very collapsed remains of a turf/stone ruin, probably a small *dwelling*, measuring c.13,30x11,6m (fig.139). The ruin shows as a slight, slanting and uneven rise in the terrain, where protruding stones, 2 possible rooms and a few faint wall lines are visible. Towards the N the ruin is bordered by natural boulders, but otherwise it is very hard to delimit.



Fig.139 Ruin 04 seen towards the SE.

slightly protruding stones (smaller rounded). A wall seem to be added to the eastern side of this turf/stone built *outhouse*, which today is vegetated by grass and crowberry.

R05: Small, turf/stone built rectangular, c.4,8x3,5m, ruin (some *outhouse*) which is slight dug into the sloping terrace. Otherwise it shows as a c.20-30cm deep depression surrounded by a c.1m wide turf wall with a few protruding angular stones. The ruin is overgrown with grass and crowberry.

R06: See ruin 04.

R07: Possible very indistinct ruin of almost square shape, c.4x4,3m, which appears only as a lines of

R08: Indistinct, roughly rectangular, c.5,4x5m, pile of stones, likely the remains of a dry stone masonry building, between natural boulders. The ruin is vegetated by grass and crowberry.

R09: Fairly distinct turf/stone built, rectangular, c.3,3x2,1m, *outhouse*, which shows a marked depression c.40-50cm deep surrounded by larger rounded stones (the southern gable is a natural boulder), which form the most visible part of the c.60cm wide walls, which only rise 10-20cm above the surface. The ruin is vegetated by grass and crowberry.

R10: Very small ruin, c.2,3x1,6m, which consists of stone built walls and partly exploiting a natural cliff face and partly dug into the slope (fig.140). The walls of this unidentified *outhouse* measure c.40cm in width and is preserved up to a height of c.110cm (4 courses). The ruin is overgrown with crowberry.

TH01: Partially destroyed trapezoid Thule-culture summer hut.



Fig.140 Ruin 10 seen towards the NW.



Fig.141 Ruin 01 and TH01 seen towards the SE.

E325 – Qanisartut

60V2-0IV-558

GPS: N 60°32'24.17"/ W 45°39'36.85". Earlier work: O. Bak. 1967.

On some 3,2km and in many respects a very similar farm to E324, the farm of E325 at Qanisartut is located has a far more inviting location; it is found further out of and on the southern side of the Akulleq Fjord, where lower part of the slopes of almost the entire stretch of Sulugssugut mountain are relatively flat and fertile, transected by countless streams (fig.142).



Fig.142 Ruin 01 and the lower part of the slope seen from towards the ENE.

On the flattest part of the slope close to the shore lies the 6 registered ruins of E325, a probably shieling under E95 (fig.143). Most of the ruins are rather poorly preserved and barely rise above the terrain, indicating rather insubstantial buildings. Although there are patches of reasonable grassland, the nearness and explosion to the open coast must exclude the rearing much livestock at the place and it might instead have been chosen for summer hunting/fishing.



Fig.143 Situation plan of the ruins of E325 on GoogleEarth satellite imagery.

Ruin numbering after O. Bak 1967

R01: Very collapsed turf/stone building, undoubtedly a *dwelling*, measuring some 20,9x15,8m and showing as a very slight elevation in the terrain (not rising more than c.10cm) with slight depressions and some protruding stones (especially in the northern end, where there is also a concentration of stone slaps, in the southern a possible stalling stone)(fig.142). A few rooms can be glimpsed. The ruin is overgrown with grass, heather and crowberry.

R02: Is almost identical to R01 in appearance, but smaller and approx. rectangular (c.13x7,3m), although it is somewhat harder to delimit than R01, especially to the south where the terrain is overgrown boulder field. Possible *stable complex*.

R03: Rectangular, c.4,9x2,8m, stone foundation for a turf building, some kind of *outhouse* (little turf is preserved and neither any stone collapse)(fig.144). The walls are lines of single lying stones interspaced with c.20-30cm, c.30cm wide and rising up 40cm above the terrain. The ruin is vegetated by grass and crowberry.

R04: Rectangular, c.5x3,9m, stone/turf structure (fig.3). The



Fig. 144 ruin 03 seen towards the S

walls in rounded stones are quite distinct, c.50cm wide and preserved in 2 courses to a height of c.40cm. There is a possible entrance in the southern gable. The many stones and the rather exposed location of the ruin to the wind could indicate its possible function as a *skemman*? Inside the ruin grows crowberry.

R05: *Enclosure* with stone built walls just in the edge of and partially incorporating the boulder field before the slope starts to steepen (fig.145). It measures c.7,7x3,2m, and the walls are c.60-80cm wide in rounded stones and preserved up to a height of c.120cm (3 courses. Inside the enclosure grows crowberry and a little grass.



Fig. 145 Ruin 05 seen towards the S.



Fig.146 Ruin 06 seen towards the ENE.

R06: Small shelter exploiting the natural hollow under a large boulder just a few meters NE of R05 (fig.146). From under this two small, c.50cm wide, 40-100cm high, stone/turf walls extend, creating a bounded and partially roofed area of c.4m².

E326 – Kalliit Ilua

60V2-0IV-562

GPS: N 60°35'53.63"/ W 45°43'6.89". Earlier work: O. Bak 1967.



Fig.147 View, looking towards the ESE, of the valley with E326 (the ruins are located right of the streams). Photo: P.B. Heide 2009.

On the southern side of the Sanerut basin the valley between the mountains of Kinalito and Akulliip Qaqqaa flows out and, upon first glimpse, would seem an obvious location for a Norse farm; the slope is gentle and cut through by a large stream, it is fairly fertile and in front of it is a stony beach with makes for reasonable landing (fig.147). Especially further up the valley are considerable stretches of grassland and wet marshland.



Fig.148 Situation plan of the ruins of E325 on GoogleEarth satellite imagery.

E326 is, however, a minor ruin group with only 2 registered ruins and thus, unless large tracks of land have eroded away, a shieling. Considering the easy land passage east up through the valley to E95a only c.4,2km away, it could have belonged to this farm? Alternatively, it could be a shieling under any of the farms of the Tortukattak Fjord. We spend approx. 2 hours surveying the site, but found no new ruins (though because of the high birch/willow shrub vegetation, some still may be unnoticed). We also cleaned the eroded section of R01 looking for datable material, but found only the very faintest traces of a floor layer (with no charcoal).

R01: Rectangular ruin, c.5,3x?, which northern part has been partially eroded away by the ocean. The walls (foundations), c.30cm in width, show as stones in 1-2 courses and only rising c.10-20cm above the vegetation. The SW gable is partly made up of a large boulder. *Boathouse* or other unidentified *outhouse*.

R02: Just south of R01 is a naked cliff face and built against this, one finds ruin 3, a stone built enclosure measuring c.6,6x3,2m. The walls are much collapsed, though still clearly visible and measuring c.50cm in width and preserved to a height of 5 courses (c.60cm). There appears to be an entrance in the western end of the enclosure, which today is overgrown with grass and crowberry.

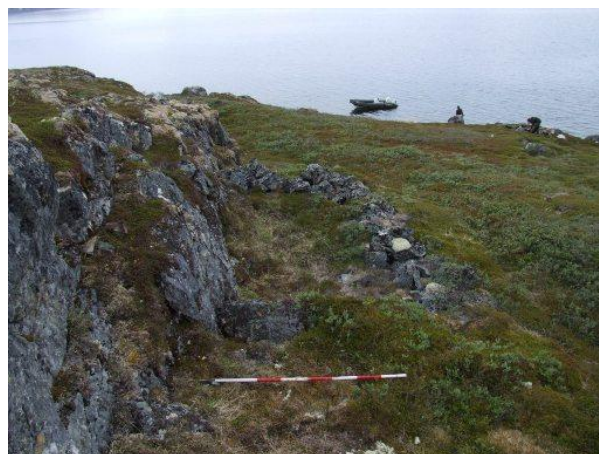


Fig.149 Ruin 02 seen towards the NW (with R01 by the bend over person to the right).

GPS: N 60°33'27.83" / W 45°50'12.08". Earlier work: O. Bak 1969.

On the western side of the Qaersutsiaq isthmus is a very inlet surrounded by rather low cliffs and knolls. The vegetation here is completely dominated by crowberry rarely rising above 20cm and thus very unsuited for grazing animal husbandry, i.e. not a suitable location for a Norse farm. The ruin group found just SW of the head of the inlet, E327, is in fact only a single ruin; a stone built dike. Because this was wrongly placed on the map, we spent c.1½ hour looking for it, but consequently surveying a considerable area around the very head of the inlet, albeit finding n0 Norse and only a few Inuit ruins.



Fig.150 View, looking towards the SW, of the slope with E327 (which is visible on the right. Photo: C.K. Madsen 2009.

The dike is found c.60m up a rather steep slope on the W side of the inlet. It lies perpendicular to the direction of the slope and at the lowest point of it that provides the easiest passage (fig.150-151). It would thus seem to lie in a suitable place to form an effective barrier. However, the slope is no more steep and the cliffs no more obstructing, than one can fairly easily pass both below and above the dike, excluding its function as an effective

barrier, e.g. for stopping sheep/goats wandering into another area. The function of this dike must hence be more symbolic, perhaps demarcating the boundary between two areas of different function or ownership? In any case, it must somehow be associated with the farm of E190, to which there is easy passage to the NE through a wide, low valley.

Numbering after O. Bak 1969.

R01: C.8m long stone built *dike* partially exploiting natural boulders. The dike is some 50-60cm wide, preserved to a height of 5 courses and has, judging from the amount of stone collapse, probably stood to a maximum height of 1,5m. To the NW it is bounded by a steep cliff face, to the SE by natural boulders. Below the latter is another short stretch of dike c.1m long.



Fig.151 View, looking towards the NE, of E327. Photo: C.K. Madsen2009.

GPS: N 60°36'40.92"/ W 45°47'56.37". Earlier work: O. Bak 1967.

In the northern part of the Sanerut basin there is a row islands almost completely closing of the northern part of this part of the fjord. The largest, c.2300x620m, and westernmost of these islands is only separated from the mainland peninsula by a c.50m wide straight, which consequently has a constant, strong current either in or out. The western side of the straight is formed by a low, rocky isthmus jutting out from the northern ridge of the Naujarssuit mountain. Just behind the coastal cliffs is a small circular valley with a central lake and reasonable vegetation.



Fig.152 Situation plan of the ruins surveyed at E328 on GoogleEarth satellite imagery.

E328 is a shieling site with only 3 ruins (2 new uncertain ones discovered in 2009) and some Inuit structures (both Thule-culture and modern). Although there is fair grass vegetation around the lake in the small valley, it is very limited in area and cannot have fed much livestock. The location of E328 must thus instead have to do with fishing/hunting around the straight (i.e. is no wider than a net can be placed across it) between the island and the mainland, something that is substantiated by the presence also of Inuit structures.



Fig. 153 Ruin 01 seen towards the N (the entrance is in the central front).

Ruin numbering after O. Bak 1967

R01: Very well-preserved and distinct foundation for a rectangular, c.7x4m, Norse turf building of unknown function (fig.153). The foundation is c.60-70cm wide and consist double rows of rounded and angular stones, slight interspaced and rising some 20-30cm above ground level. There are no traces of other collapse, neither stone, nor turf. There is a clear entrance in the southern gable. The ruin is vegetated by heather and willow.

R02: Very uncertain Norse ruin, c.5,3x2,7m, showing as slight depression surrounded by stones on three sides, while the northern side cannot be delimited (fig.154). Within this stone frame there is vegetation of grass, while the surrounding area is overgrown with crowberry and willow. Especially the eastern gable seems distinct and rises some 10-20cm above ground level.

R03: Very uncertain and small, c.3x2,3m, ruin, which appear mainly as a pile of rounded stones and lying just 10m W of R02 (fig.155). The ruin seem to have been of almost square shape and towards the south especially one glimpses the traces of a stone foundation. Alternatively, the feature could be an Inuit hunters-bed.

TH01: Almost square stone built feature, probably Thule-culture, measuring c.3,7x2,7m. The walls are c.40cm wide and preserved in 3 irregular courses. There is an opening towards the south. Hunters-bed? Judging from the appearance of the wall of some age.

TH02: Stone/turf built Thule-culture hut wall (tent ring) w. traces of a bench.



Fig. 154 Ruin 02 seen towards the E.

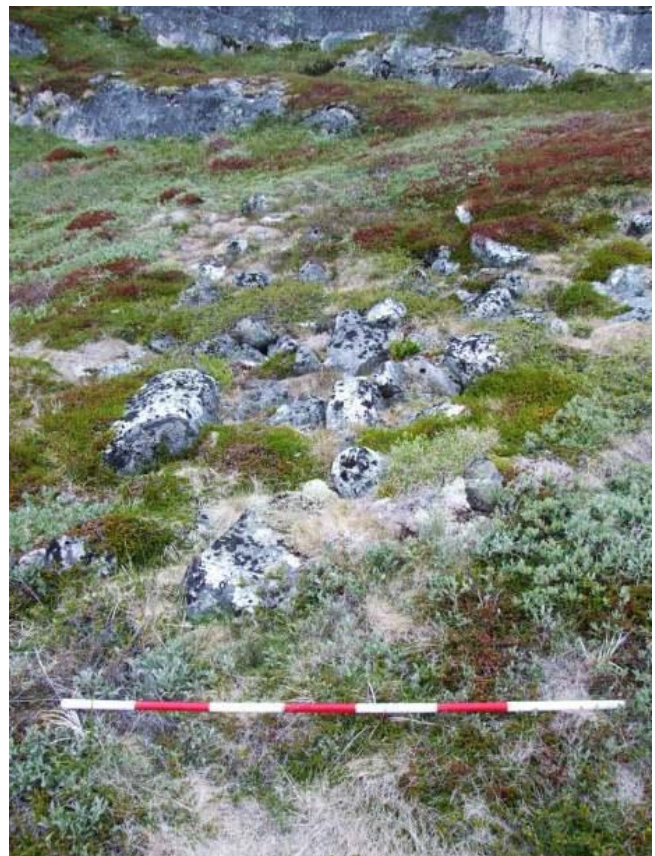


Fig. 155 Ruin 03 seen towards the N.

GPS: N 60°37'29,8056" / W 045°54'32,6664". Earlier work: O. Bak 1968, 1971.

On the southern side of the island of Kangeq, just on the northern outskirts of the modern Inuit settlement Eqlugaarsuit, one finds a cluster of 12 close lying ruins, the ruin group E329. In spite of the number of ruins, E326 must still be considered a farm, if not a shieling, of the smallest kind, something that is attested not only by the small dwelling (R1), but also by the many makeshift ruins (see below). 4 of the ruins (1, 2, 5 & 6) are found on a narrow grassy terrain sloping gently down towards the river, while the rest of the ruins are located in a boulder field just north of here. It worth noting that the boulder field consists of a few rather large boulders and very many smaller, rounded stones (fig.156) and that all of the ruins in the boulder field have been made by simply stacking up the smaller rounded stones, taking only those from inside the structure and thereby creating a “lowered” floor surrounded by wall/large boulders. The rounded shape of the stones used does, however, make for very unstable walls, which easily slide down. Thus the widths of the dry stone walls, as shown on plan, are rather exaggerated and hard to establish with certainty. Just north of the boulder field the mountain rises rather steeply to a height of c.300-350m. Some 500m to the NW of the buildings is a small crescent shaped valley with reasonable vegetation (this must have been the main grazing land of the farm, as there today is only sparse vegetation). The modern settlement of Eqlugaarsuit lies along a narrow peninsula jutting out from the island and thereby creating a perfect, sheltered harbor. Some ruins must have been removed by the modern settlement, though none were there in 1968.

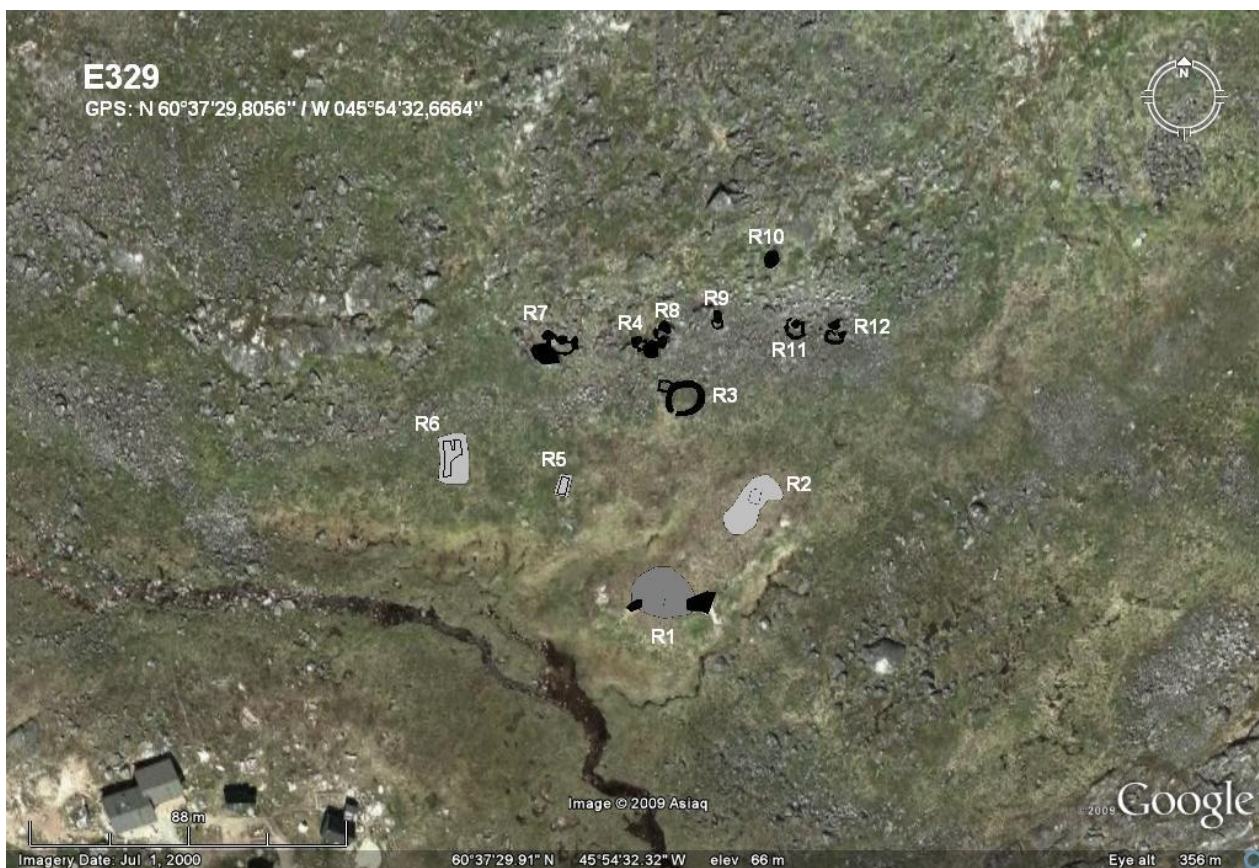


Fig.156 Google satellite image with the surveyed ruins of E329. Note the “strip” of grassy land just S of the boulder field . In the left hand corner is the houses on the outskirts of Eqlugaarsuit.

Approx. 3 hours were spent surveying the ruin group and reconnoitering for new ruins, adding 6 ruins to the 6 found by O. Bak. The search for new ruins was, unfortunately, limited to the area just around the cluster and the crescent shaped valley was not visited at all and may thus hold several ruins. Also, the boulder field was full of features resembling ruins, but this was hard to decide with any certainty and several ruins may still hide here.

Ruin numbering after O.Bak 1968, 1971.

R01: Located on a low sandy knoll (fig.157) is a very indistinct ruin, which appears as a small, uneven mound of grass, turf and protruding stones, measuring c.18x14,5m. A few depressions (rooms?) are vaguely visible. Undoubtedly a small *dwelling*. The SE and SW edges of the ruin have been eroded, probably by sheep, and in the SE “notch” a turf/stone build wall with many specs of charcoal can easily be distinguished (possibly also allowing for a dating of the ruin).

R02: Also lying on a low, sandy, drained stretch just c.18m NE of R01, one finds the very similar looking remains of a stone/turf building measuring c.18x8m. Probably a *staple complex*. In the NE end of the structure is a small room, c.4x2,6. The walls are here about 2m wide. The ruin is so collapsed that it is somewhat hard to define.

R03: Just on the edge of the boulder field, one finds R03, a *circular enclosure or milking pen* w. a diameter of c.10m and made of smallish rounded stones (fig.157-158). The thickness of the walls is somewhat hard to discern, as they are very collapsed and mixed with the boulder field, but it is probably around 1,8-2m and preserved to a height of c.60cm. An entrance can be seen to the SW and a small enclosure have been added (seems later feature than the circular enclosure) to the NW (fig.158). Inside the enclosure grows willow, birch, grass and moss.



Fig.157 R03 seen towards the S. In the background , near the stream, the sandy knoll with R01 is visible. Photo: P.B. Heide 2009.

R04: A small *shelter* or *pen*, c.2,8x1,6m (inside dimensions), built in the boulder field by building walls between and exploiting some natural boulders (fig.158). Remains of approx. 80cm wide and 40cm high walls can be seen. Part of the enclosed area lie under one of the boulders.

R05: Stone foundation, c.60cm wide and up 60cm high, for a rectangular building or *outhouse* measuring c.6x3,5m. Vegetated by grass, willow and Alpine Lady's Mantle.

R06: Very collapsed rectangular building, measuring c.13,5x7,70m, with stone/turf build walls up 100-120cm wide and 30cm high. Inside the structure several partitions for rooms can be glimpsed.

Judging from the rooms, it is possibly a *sheep/goat stable w. hay barn* or some other *outhouse*. The ruin is vegetated by crowberry, willow and birch.

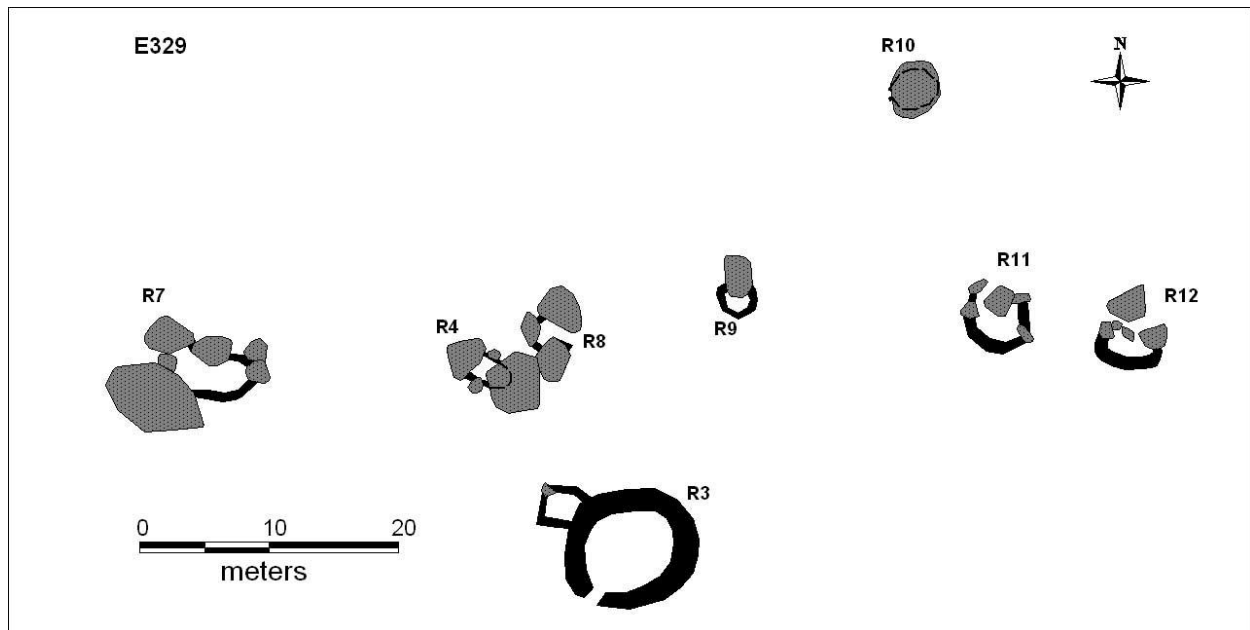


Fig.158 Survey plan of the structures in the boulder field north of the dwelling.

R07: *Pen/fold*, c.5,2x2,9cm (inside dimensions), with same description as R04 (fig.158). It encloses an area of c.14m². The walls are c.40cm wide and 40cm high. Inside the pen grows grass and Alpine Lady's Mantle.

R08: *Shelter or small pen*, c.3x2,5m (inside dimensions), with same description as R04 (fig.158). Inside the structure grows lush grass and Alpine Lady's Mantle. A clearly visible entrance opens up towards the SE.

R09: *Small shelter*, c.2,2x1,3m (inside dimensions), with same description as R04 and with walls c.100cm wide and preserved up to a height of 100-120cm (fig.158-159).

R10: *Cave shelter*, c.3,6x3,1m (inside dimensions), lying under a large boulder with a nicely defined entrance towards the W (fig.158).

R11: *Small enclosure*, c.4,5x2,7m (inside dimensions), with same description as R04 (fig.158). Encloses roughly 11m² and with walls c.100cm wide and preserved to a height of c.60cm. The structure has an entrance in the NW corner.

R12: *Small enclosure*, c.3,3x3m (inside dimensions), with same description as R04. Encloses roughly 9m² and with walls c.100cm wide and preserved to a height of c.60cm. The northern part of the ruin is somewhat more indistinct.



Fig.159 R09 seen towards the SE. Notice the rounded stones and the means of constructing the ruin by removing and stacking them up from inside the structure. Photo: P.B. Heide

GPS: N 60°38'9.95"/ W 45°44'2.77". Earlier work: O. Bak 1968, 1971.

In the northeastern corner of the Sanerut basin, the mouth of an only c.70m wide inlet leads about 1,7km further in to the ENE and here, in a completely sheltered semicircular valley down to the inlet, one finds the Norse farm E330. The lower slopes of the valley are rather gentle, with some grass or wetland patches, but otherwise dominated by birch and willow shrub. Everywhere the coast is shallow and provide easy landing with boats. From the farm there is less than 1km to the Kangerluarsorujuk Fjord over the peninsula to the north (rising to height of c.200m).



Fig.160 View towards the SW out the inlet with E330 (with is located on the slope to the right).

With its 8 ruins (3 of which were discovered in 2009) and tiny dwelling, E330 is a very small farm, if not a shieling (under E178?). We spent c.2½ hours surveying the ruins, but still some ruins probably hide in the high willow/birch shrub.

Ruin numbering after O. Bak 1968, 1969

R01: Very collapsed and indistinct turf/stone ruin, undoubtedly the *dwelling*, measuring some 9,9x8,4m. The ruin appears as a slight elevation in the terrain with a few protruding angular stones and the trace of 2 rooms and a wall line. Towards the S is a small midden area with collapse stones. The ruin is vegetated by grass, crowberry and Alpine Lady's Mantle.

R02: Totally collapsed and indistinct turf/stone ruin, where one can just make out the walls of a 4,6x4,1m large building, some *outhouse* (*small staple?*). The walls (1 course) are c.30-40cm wide



Fig. 161 Situation plan of the ruins surveyed at E328 on GoogleEarth satellite imagery.



Fig.162 Ruin 03 seen towards the NW.

and rises only 10-20cm above ground level, but are so overgrown by birch, willow and crowberry that just the top of the angular stones are visible. The southern long wall is most distinct. In front of the western gable is an area of collapse stone, unless it is a separate room? The faint trace of a partition wall can be seen approx. in the center of the ruin.

R03: *Shelter* in natural, narrow crevice, c.3,3x4,5m, created by adding walls and roof to the natural feature, thus creating a small, partially roofed room of only c.7m² (fig.162). The northern end is naturally blocked, while the southern has been blocked by a small stone wall. Also, in the southern end of the crevice, where it is somewhat low, wall has been added to increase its height. Approx. middle in the structure a flat stone slab functions as a kind of stone beam. In the crevice grows ferns and grass.

R04: Relatively well preserved, stone built *enclosure*, c.4,3x2,4m, built against a steep cliff face. The walls that partially incorporate natural boulders, are c.50-60cm in width and preserved in up to a height of c.120cm (5 courses). Even

though the walls are well-preserved, no entrance could be observed. Inside the enclosure grows ferns, grass and moss.

R05: Very well-preserved, stone built *enclosure*, c.7,2x3,8m, built against the same steep cliff face as R04 (fig.163). The partially collapsed walls measure c.60-80cm in width and are preserved in up to a height of 160cm (6 courses). A clear entrance is visible in the SW corner and a smaller, possible enclosure can be seen in the SE. Inside the enclosure grows knee high willow shrub.



Fig.163 Ruin 05 seen from the cliff.



Fig.164 Ruin 06 seen towards the SE.

entrance can be seen in the NW corner?

R07: Possible rectangular stone foundation, c.5,8x4,2m, for a turf building? The foundation is c.20-30 wide and of larger, rounded, and interspaced stones. Especially the NE long wall and the two gables appear fairly distinct. Alternatively, the ruin could be a natural formation (it is located on a low ridge created by melt water from a stream and some of the stones do appear “washed”). The ruins is overgrown with willow, crowberry and grass.

R06: Lying on top of the cliff just over R05 (and very visible while nearing the farm from the inlet) one finds R06, a reasonably well-preserved, rectangular, c.4,4x2,1m, building in dry stone masonry, perhaps a *small skemma* (fig.164)? It is, however, only the northern wall and the two gables that are preserved, whereas the southern wall is completely collapsed. The walls, which are c.50-60cm wide, are preserved in up to a height of c.60cm (3 courses). On the western side of the ruin is a possible added room and a possible



Fig.165 Ruin 08 seen towards the SE.

R08: Just 3,5m east of R07 lies R08, which is of almost identical description, only slightly larger, c.6,4x3,6m (fig.165). Because R07&08 are so similar in appearance and close lying, they might actually have been one building, perhaps even a long houses with rounded long walls and measuring c.15,9x4,3m? The space between the two ruins is full of smaller stones and look very disturbed.

0109 – Taseq Ammalortoq

New ruin group

GPS: N 60°51'33.45" / W 45°12'44.80"

The sheep farmer of E167 kindly informed us of possible Norse ruins on the northern shores of the lake Taseq Ammalortoq NE Vatnahverfi and we then decided to visit the site; a small isthmus completely covered with waist high birch/willow vegetation juts out from the northern shore and at the base of this we confirmed two very close lying Norse ruins (c.215m A.S.L.). These must be a shieling of a type that might be much underrepresented in the material, because of their very modest size and visibility. This part of NE Vatnahverfi lies at an altitude of only c.150-250m A.S.L. and is actually the mouth of a wide NE-SW running valley. It is characterized by a vegetation of birch and willow shrub, but also large and fairly fertile grassland pastures and wetlands areas along the streams and rivers. It is, thus, an area very suited for shieling activities.



Fig.166 Situation plan of the new ruin group 0109 on GoogleEarth satellite imagery.

Because we had misunderstood the information from the sheep farmer, we actually spent over 1½ hour surveying the small isthmus and it can be excluded with high certainty that there should be any more ruins on or close by it.

R01: Somewhat collapsed, but very distinct rectangular, c.19,5x5,1m, *outhouse*. The walls seem purely turf, c.2m wide at the base and c.80cm at the top, preserved to a height of c.60cm. To rooms, each with entrance from the W, are clearly visible. The ruin is vegetated by grass and waist high birch willow shrub.

R02: Only c.1m W of R01 is a building of almost identical appearance, R02, only slightly longer (measuring c.13,5m in length) and with three separate rooms, two of which have entrance from the east and the third from the west.



Fig.167 The isthmus with ruin group 0109 seen towards the SE. Photo: C.K. Madsen 2009.

0209 – Tasersuaq

New ruin group

GPS: N 60°48'12.12" / W 45°30'32.19".

In the southwestern corner of the large Tasersuaq Lake, only some c.1,5km from E172, it forms a small inlet and at the head of this is a narrow peninsula (fig.168). This peninsula seems to have been



Fig.168 View of the peninsula with 0209 seen towards the ENE. Photo: C.K. Madsen 2009.

used as a water bounded *enclosure* by constructing a turf (/stone?) wall across the base of it, thus creating an enclosed area of c.1677m². Because the peninsula has a fairly fertile vegetation of grass, moss, willow and birch, it could have been used for enclosing animals over a prolonged period, e.g. during days of large roundups.

R01: Turf build *dike* across peninsula that can be followed for c.25m (fig.169). The dike is somewhat collapsed, but still very distinct, c.2,5-3m wide at the base, c.60-100cm at the top, and preserved in up to a height of c.110-120cm. The wall is best preserved in its middle part (fig.170) and somewhat more “flattened” towards both ends. The northern side (out towards the peninsula) of the dike is slightly steeper, while the southern side is again more flattened. The NW end of the dike ends exactly where one can see and old beach line, indicating that a considerable transformation of lake to marshland has occurred since Norse times. There is a possibility that the dike could be a natural formation, i.e. a bank produced by the movement of ice on the lake, but the peninsula in front of the dike, and thus more exposed to such processes, is very uneven and show no trace of such a process.

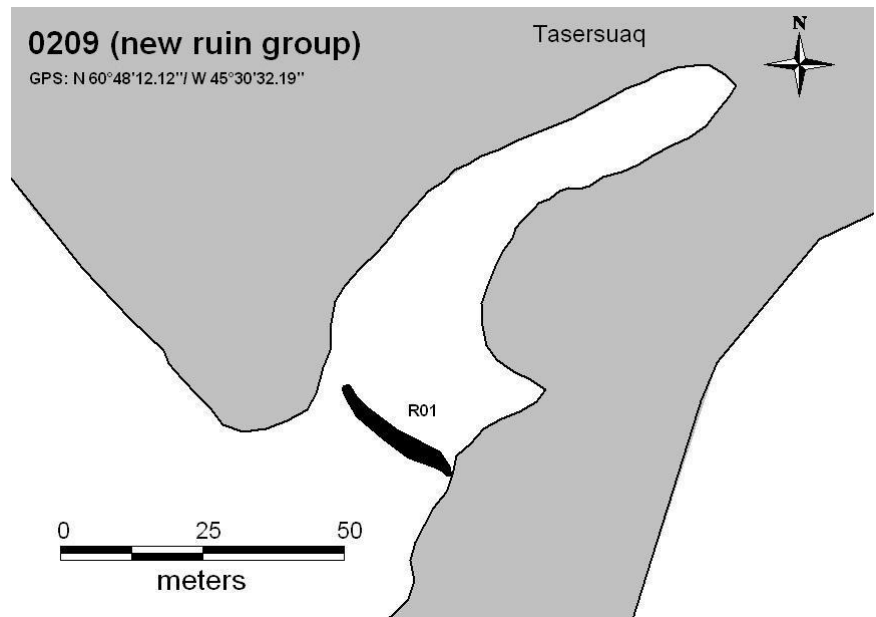


Fig.169 Situation plan of the dike R01 and the peninsula



Fig.170 The central part of the dike R01 seen towards the S. Photo: C.K. Madsen 2009.

Results and Perspectives

During the survey part of the 2009 Vatnahverfi field season, 30 ruin groups were visited, two of which were new sites, and 176 Norse ruins DGPS surveyed (plus 25 plus Inuit), 82 (almost half) of which were previously unrecorded, transforming the coastal sites into considerable farms. With these new recordings, almost the entire Vatnahverfi peninsula has been uniformly and thoroughly surveyed, allowing for detailed and accurate spatial analysis of settlement patterns and economy strategies employed by the Norse Greenlanders.

The distribution of sites in the coastal region seem somewhat clearer than in the inner fjords, primarily because this area does not seem so densely populated (and may not have been populated for as long as the farms of the inner fjords), but also because the vegetation, when compared with the inner fjords, is rather poor and sets other limits for the traditional Norse livestock transhumance: they needed to exploit larger areas for grazing. It seems, then, that in the coastal region each of the smaller fjords were home to just one main farm, always located at the most fertile location in the fjord (though not necessarily with the most outhouses). Associated with this main farm was a smaller farm, characterized by a minor dwelling, but a considerable number of outhouses (some of which, though, are of rather make-shift appearance), such pairs as e.g. E95-95a, E178-E330, E93-E92, E181-E329. Whether this second smaller farm was a full-shieling, i.e. a place where the inhabitants of the main farm took up residence all summer, or a tenant farm, is hard to say. Finally, there are to each main farm a small number of strategically placed shielings with quite few and insubstantial buildings. These shielings might very well also be associated with hunting/fishing activities.

This description is, evidently, in need of much elaboration and the obvious next step, which would allow for detailed analysis, is dating of the coastal ruin groups. In this regard they present a unique opportunity; in at least 9 cases, ruins are being eroded away, most by the sea and from the natural profiles produced by this erosion, it would be fairly uncomplicated to extract datable material from a reasonably secure archaeological context (floor layer, layer under wall etc.) without disturbing the ruins in any severe manner. Such dating could produce several interesting results; 1) if the all the dates fall within a narrow time span (in spite of different types of structures being dated), it would give us information about how long and when the coastal region was settled/abandoned, 2) if specific types of farms can be identified in the coastal area (as suggested above) and these might be identified in the inner fjord areas also, dating from the coastal farms should hint also at a date of the former, 3) provide a chance to date different types economy buildings, which are an otherwise overlooked and confused type of structures. Other types of samples, e.g. for “dirt DNA”, could be retrieved from the sections and, at the same time, the ruin properly documented before it is lost.

Having a complete and modernly re-surveyed area opens new opportunities for understanding the Norse exploitation of different local environments; hunting/fishing became a mainstay of the Norse diet and the easiest access to these sources are on the coast, while other products had to travel out the fjord to the coastal farms with less productive grazing areas. Finishing the survey of the last ruin groups of the Vatnahverfi peninsula, i.e. the island of Akia and few more, would with relatively little cost and time complete this picture and gives us the clearest image of the settlement layout of an entire, Norse fjord system.

Bibliography – Sources used

Sources used during field work or report:

Arneborg, J., Hebsgård, M., Lynnerup, N., Madsen, C.K., Paulsen, C.P. & Smiarowski, K., 2009:

- Resources, Mobility, and Cultural Identity in Norse Greenland, Vatnahverfi Project – Report from the Field Work 2008. Danmarks Middelalder & Renæssance, Nationalmuseet, Feltrapport 26, 2007, København.

Link: <http://www.nabohome.org/publications/fieldreports/Vatnahverfi2008Rapport.pdf>

Berglund, Joel, 1980:

- Antikvariske arbejder i Narssaq, Julianehåb og Nanortalik Kommuner, Grønland, 1980. Nationalmuseet.

Bruun, D., 1895:

- Arkæologiske Undersøgelser I Julianehaabs Distrik. *Meddelser om Grønland* 16(3), København.

Holm, G., 1883:

- Beskrivelse af Ruiner i Julianehaabs Distrikt, der ere undersøgte i Aaret 1880. *Meddelelser om Grønland* 6 (3).

Møller, N.A. (ed.), Johansen, L.L., Madsen, C.K., Felding, L., Heide, P.B., Smiarowski, K., 2007:

- Vatnahverfi 2007. Udgravning i norrøne kirkegårde og møddinger. Rapport om opmålinger og udgravninger i Vatnahverfi, sommeren 2007. Danmarks Middelalder & Renæssance, Nationalmuseet, Feltrapport 26, 2007, København.

Link:

<http://www.natmus.dk/graphics/natmus2004/sila/Rapporter/26.Feltrapport%20%28Vatnahverfi%20Rapport%202007%29%20komp.pdf>

Møller, N.A. & Madsen, C.K.:

- **2005:** Nordboerne i Vatnahverfi. Rapport om rekognoscering og opmåling af nordboruiner i Vatnahverfi, sommeren 2005. SILA – Nationalmuseets Center for Grønlandsforskning, *Feltrapport* 24, 2006, København.

Link: <http://www.natmus.dk/graphics/natmus2004/sila/Rapporter/24.Feltrapport.pdf>

- **2006:** Gård og sæter, hus og fold – Vatnahverfi 2006. Rapport om besigtigelser og opmålinger i Vatnahverfi, sommeren 2006. SILA – Nationalmuseets Center for Grønlandsforskning, *Feltrapport* 25, 2007, København.

Link:

<http://www.natmus.dk/graphics/natmus2004/sila/Rapporter/25.Feltrapport%20%28Vatnahverfi%20006%29.pdf>

Smiarowski, K., 2007:

- Greenland 2007 Field Season – Preliminary Report.

Link: <http://www.nabohome.org/publications/fieldreports/Greenland2007FieldReportKS05-23-09.pdf>